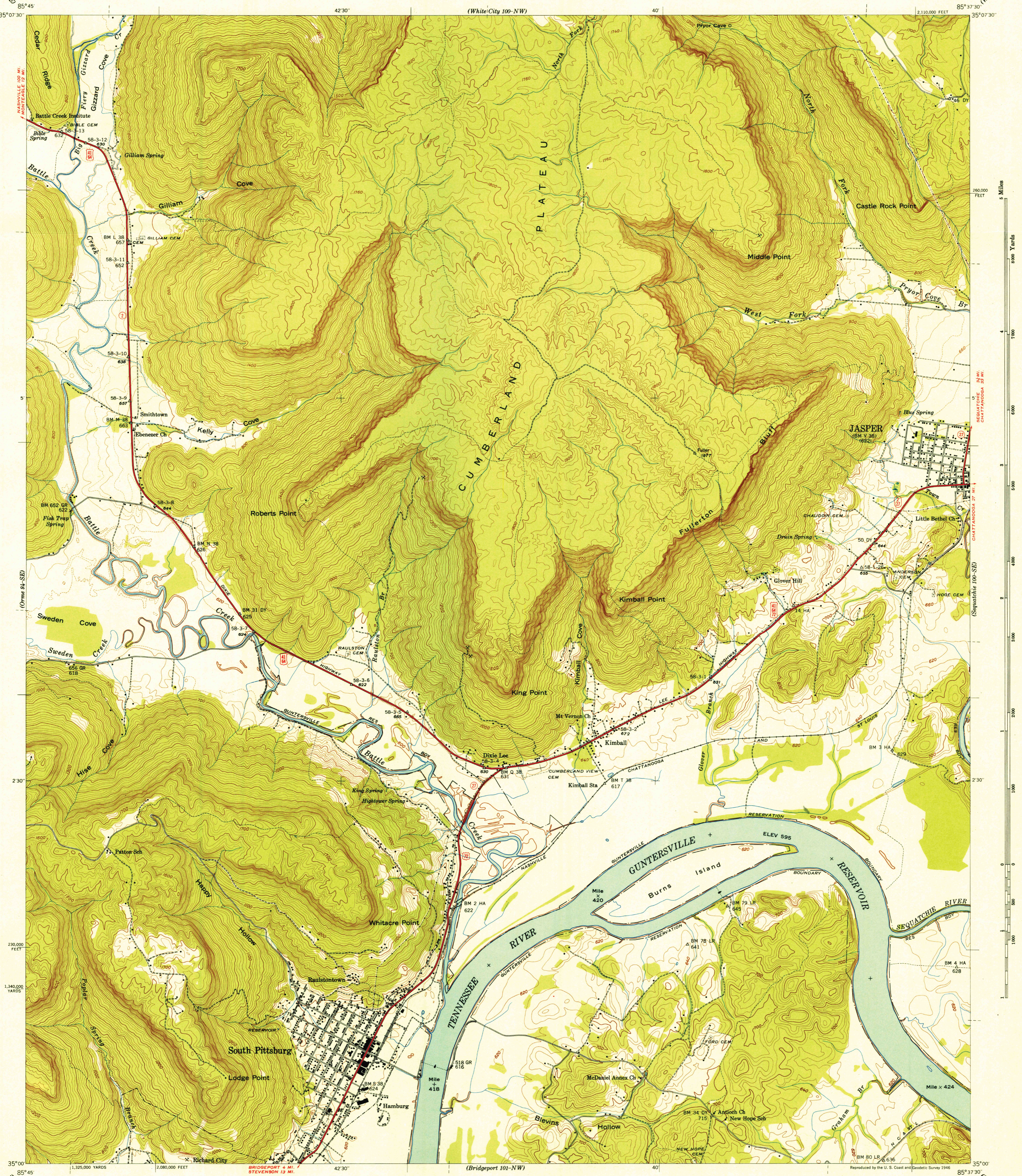


(Monticello 94-NE)

(White/City 100-NW)



Control by USC&GS, USGS, TVA, and WPA.
Topography by Geological Survey from aerial
photographs by stereophotogrammetric methods.
Field examination by Tennessee Valley Authority, 1942.
Maps distributed by the Geological Survey.

Scale 24,000
1" = 2 Miles
1" = 2 Kilometers

Contour interval 20 feet
Occasional 10 foot contours shown by broken lines
Datum is mean sea level

U. S. G. S.
FILE COPY
Inventories and Mailing

Polyconic projection. 1927 North American datum
10,000 foot grid based on Tennessee
rectangular coordinate system.
5,000 yard grid based on U. S. zone system, C.
ROUTES USUALLY TRAVELED
HARD IMPERVIOUS SURFACES
OTHER SURFACE IMPROVEMENTS
SOUTH PITTSBURG, TENN.
100-SW
Edition of 1943
N3500-W8537.5/7.5

(Shelwood 101-NE)