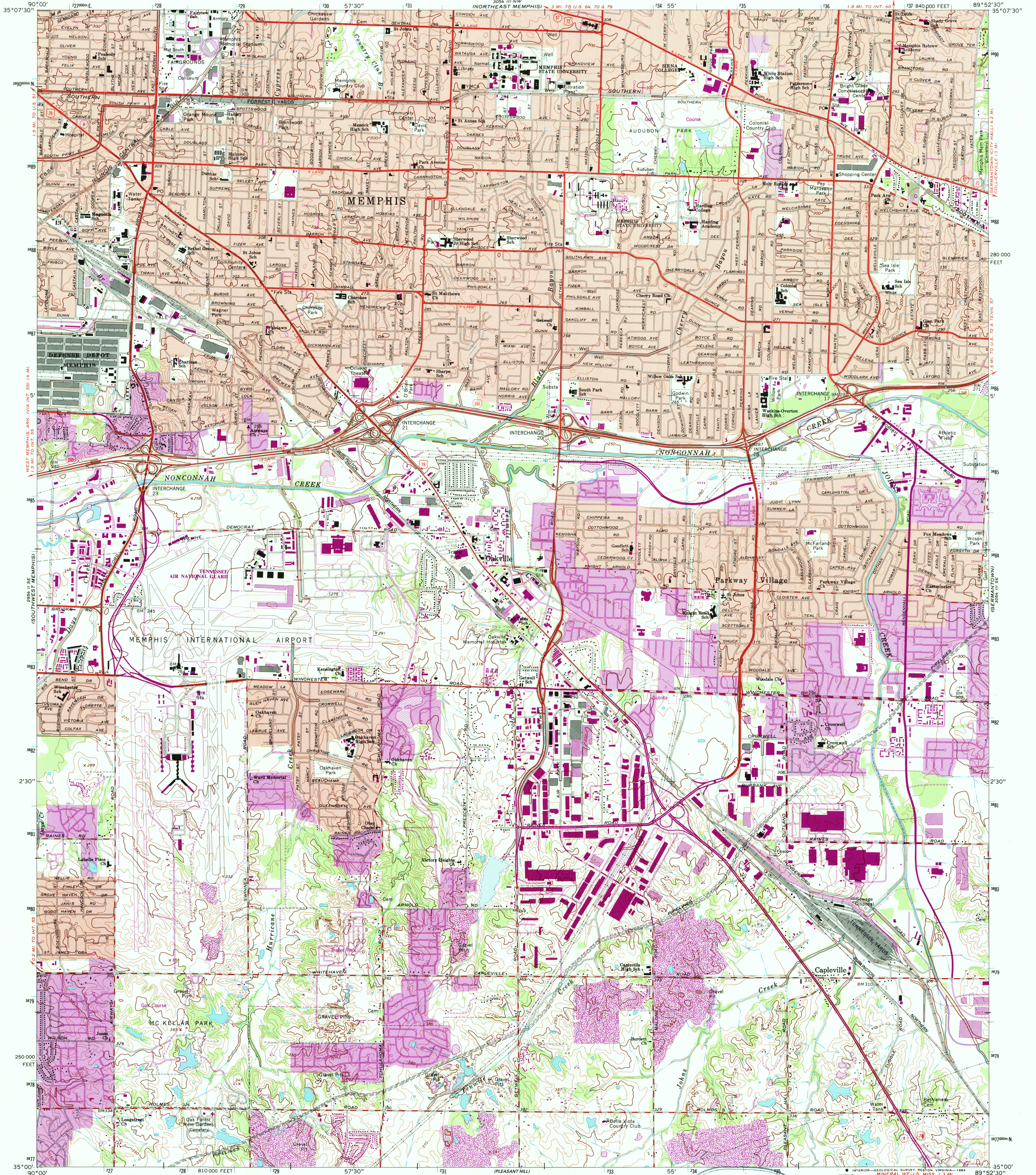


UNITED STATES
DEPARTMENT OF THE INTERIOR
GEOLOGICAL SURVEY

SOUTHEAST MEMPHIS QUADRANGLE
TENNESSEE—SHELBY CO.
7.5 MINUTE SERIES (TOPOGRAPHIC)
SW/4 BARTLETT 15' QUADRANGLE



Mapped, edited, and published by the Geological Survey

Control by USGS, NOS/NOAA, and USCE

Topography by photogrammetric methods from aerial photographs taken 1963. Field checked 1965

Polyconic projection. 10,000-foot grid ticks based on Tennessee coordinate system.

1000-meter Universal Transverse Mercator grid ticks, zone 16, shown in blue

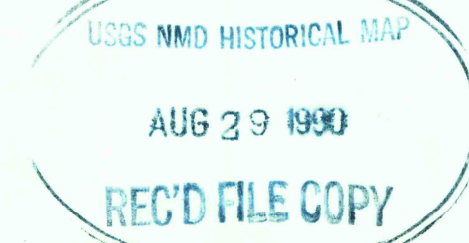
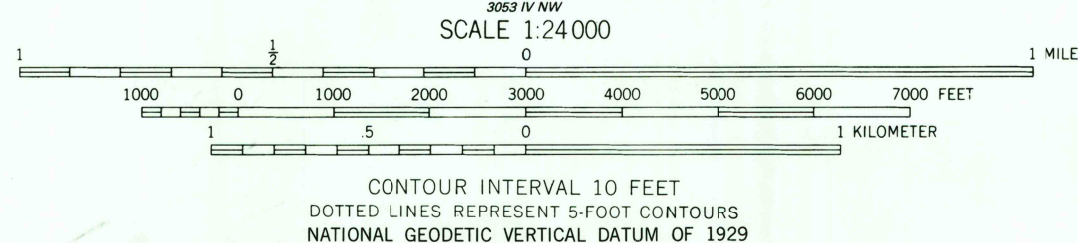
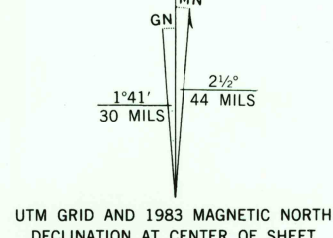
To place on the predicted North American Datum 1983

move the projection lines 7 meters south and 8 meters east as shown by dashed corner ticks

Fine red dashed lines indicate selected fence and field lines where generally visible on aerial photographs. This information is uncheck

Red tint indicates areas in which only landmark buildings are shown

There may be private inholdings within the boundaries of the National or State reservations shown on this map



THIS MAP COMPLIES WITH NATIONAL MAP ACCURACY STANDARDS
FOR SALE BY U.S. GEOLOGICAL SURVEY, DENVER, COLORADO 80225, OR RESTON, VIRGINIA 22092
AND TENNESSEE DEPARTMENT OF CONSERVATION, DIVISION OF GEOLOGY, NASHVILLE, TENN. 37243
A FOLDER DESCRIBING TOPOGRAPHIC MAPS AND SYMBOLS IS AVAILABLE ON REQUEST

Revisions shown in purple and woodland compiled from aerial photographs taken 1980 and other sources. This information not field checked. Map edited 1983
Purple tint indicates extensions of urban areas

SOUTHEAST MEMPHIS, TENN.
SW/4 BARTLETT 15' QUADRANGLE
35089-A8-TF-024

1965
PHOTOREVISED 1983
DMA 3054 III SW—SERIES Y841