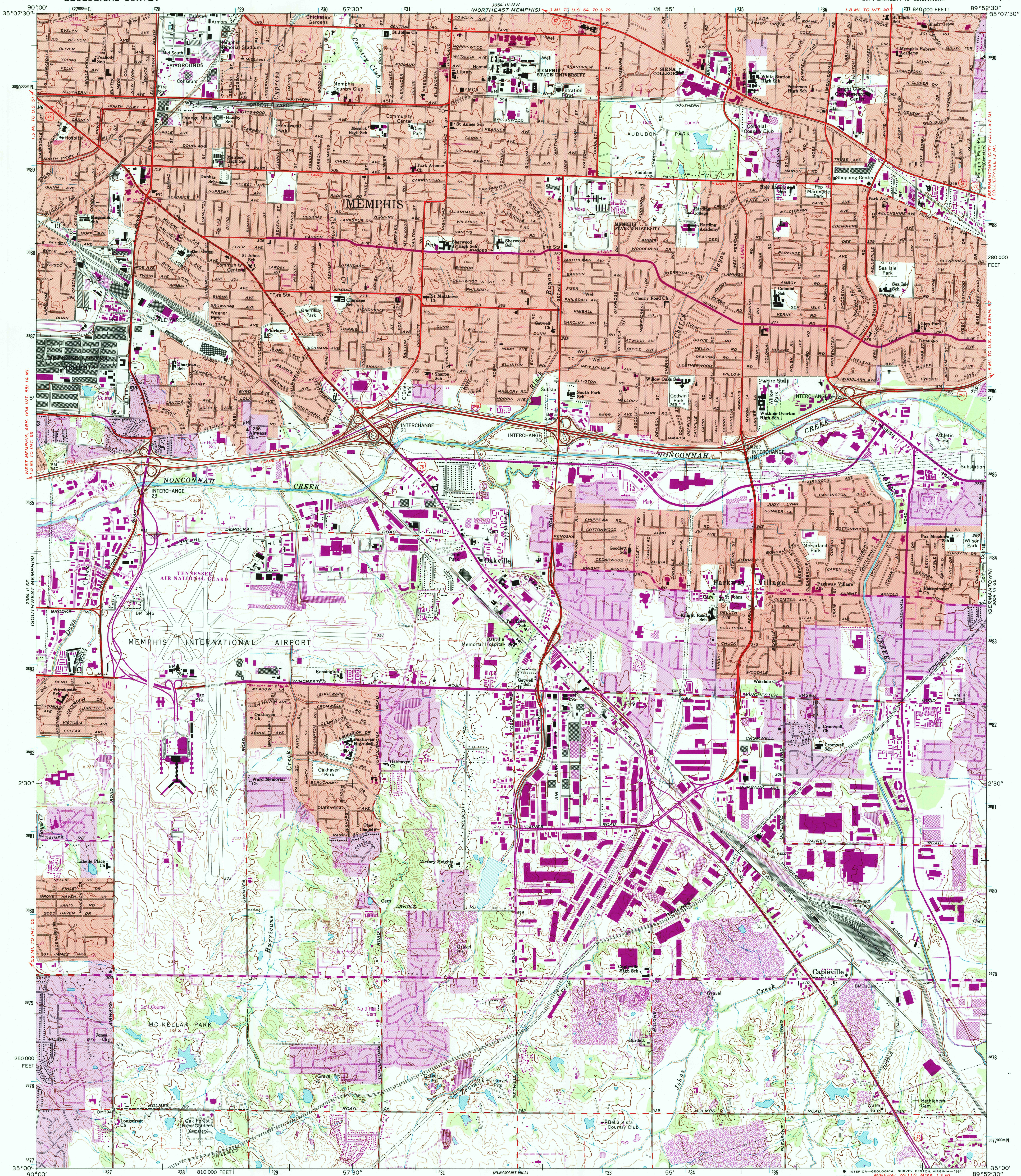
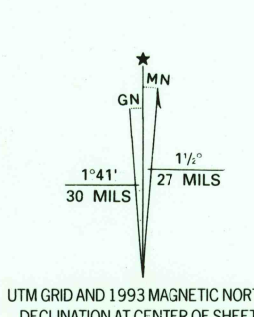


UNITED STATES  
DEPARTMENT OF THE INTERIOR  
GEOLOGICAL SURVEY

SOUTHEAST MEMPHIS QUADRANGLE  
TENNESSEE-SHELBY CO.  
7.5 MINUTE SERIES (TOPOGRAPHIC)  
SW/4 BARTLETT 15' QUADRANGLE



Produced by the United States Geological Survey  
Control by USGS, NOS/NOAA and USCE  
Topography by photogrammetric methods from aerial photographs  
taken 1963. Field checked 1965  
Projection and 10,000-foot grid ticks: Tennessee coordinate  
system, (Lambert conformal conic)  
1000-meter Universal Transverse Mercator grid ticks, zone 16, shown in blue  
1927 North American Datum (NAD 27)  
North American Datum of 1983 (NAD 83) is shown by dashed corner ticks  
The values of the shift between NAD 27 and NAD 83 for 7.5-minute  
intersections are given in USGS Bulletin 1875  
There may be private inholdings within the boundaries of  
the National or State reservations shown on this map  
Red tint indicates areas in which only landmark buildings are shown  
Fine red dashed lines indicate selected fence and field lines where  
generally visible on aerial photographs. This information is unchecked  
Purple tint indicates extension of urban areas



CONTOUR INTERVAL 10 FEET  
DOTTED LINES REPRESENT 5-FOOT CONTOURS  
NATIONAL GEODETIC VERTICAL DATUM OF 1929

THIS MAP COMPLIES WITH NATIONAL MAP ACCURACY STANDARDS  
FOR SALE BY U.S. GEOLOGICAL SURVEY, DENVER, COLORADO 80225, OR RESTON, VIRGINIA 22092  
AND TENNESSEE DEPARTMENT OF CONSERVATION, DIVISION OF GEOLOGY, NASHVILLE, TENNESSEE 37243  
A FOLDER DESCRIBING TOPOGRAPHIC MAPS AND SYMBOLS IS AVAILABLE ON REQUEST

USGS AND HISTORICAL  
MAP ARCHIVES  
AUG 10 1994  
REC'D FILE COPY

ROAD CLASSIFICATION

Heavy-duty	Light-duty
Medium-duty	Unimproved dirt
Interstate Route	U.S. Route
	State Route

SOUTHEAST MEMPHIS, TENN.  
SW/4 BARTLETT 15' QUADRANGLE  
35089-A8-T-024

1965  
REVISED 1993  
DMA 3054 III SW - SERIES V841