

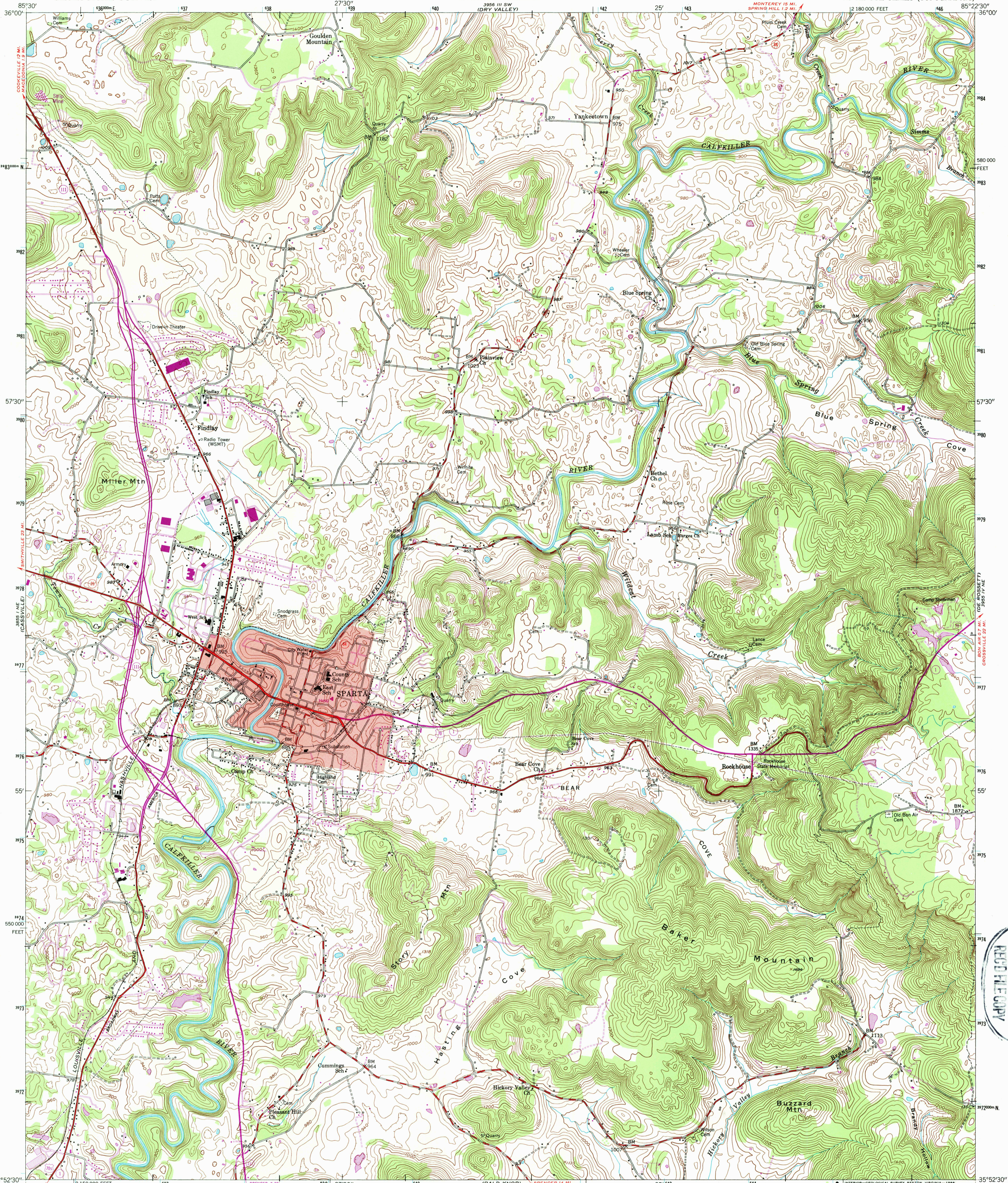
BURGESS FALLS
3984 1/2 MI
3985 1/2 MI

UNITED STATES
DEPARTMENT OF THE INTERIOR
GEOLOGICAL SURVEY

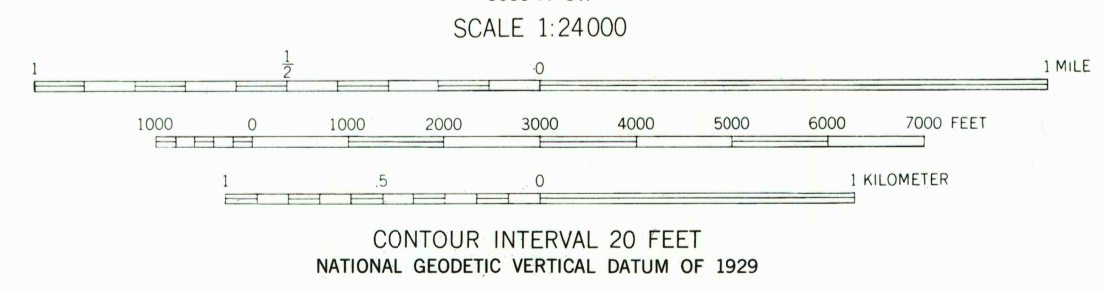
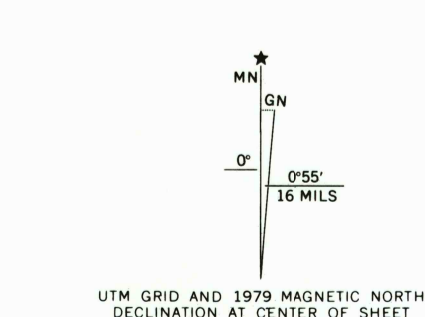
STATE OF TENNESSEE
DEPARTMENT OF CONSERVATION
DIVISION OF GEOLOGY

SPARTA QUADRANGLE
TENNESSEE—WHITE CO.
7.5 MINUTE SERIES (TOPOGRAPHIC)

MONTEFEE LAKE
3984 1/2 MI
3985 1/2 MI

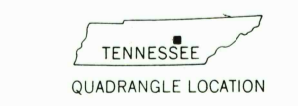


Mapped, edited, and published by the Geological Survey
Control by USGS, USC&GS, and Tennessee Geodetic Survey
Topography from aerial photographs by multiplex methods
Aerial photographs taken 1951. Field check 1954
Polyconic projection. 1927 North American datum
10,000-foot grid based on Tennessee coordinate system
Red tint indicates areas in which only
landmark buildings are shown
Unchecked elevations are shown in brown
1000-meter Universal Transverse Mercator grid ticks,
zone 16, shown in blue
Revisions shown in purple compiled from aerial photographs
taken 1976 and other source data. This information
not field checked. Map edited 1979



ROAD CLASSIFICATION

Heavy-duty	Light-duty
Medium-duty	Unimproved dirt
U.S. Route	State Route



THIS MAP COMPLIES WITH NATIONAL MAP ACCURACY STANDARDS
FOR SALE BY U.S. GEOLOGICAL SURVEY, DENVER, COLORADO 80225, OR RESTON, VIRGINIA 22092
AND TENNESSEE DIVISION OF GEOLOGY, NASHVILLE, TENNESSEE 37219
A FOLDER DESCRIBING TOPOGRAPHIC MAPS AND SYMBOLS IS AVAILABLE ON REQUEST

To place on the predicted North American Datum 1983,
move the projection lines 6 meters south and
1 meter west as shown by dashed corner ticks

SPARTA, TENN.
35085-H4-TF-024
1954
PHOTOREVISED 1979
DMA 3955 IV NW—SERIES 8441

REC'D FILE COPY
APR 29 1987
U.S. GEOLOGICAL SURVEY