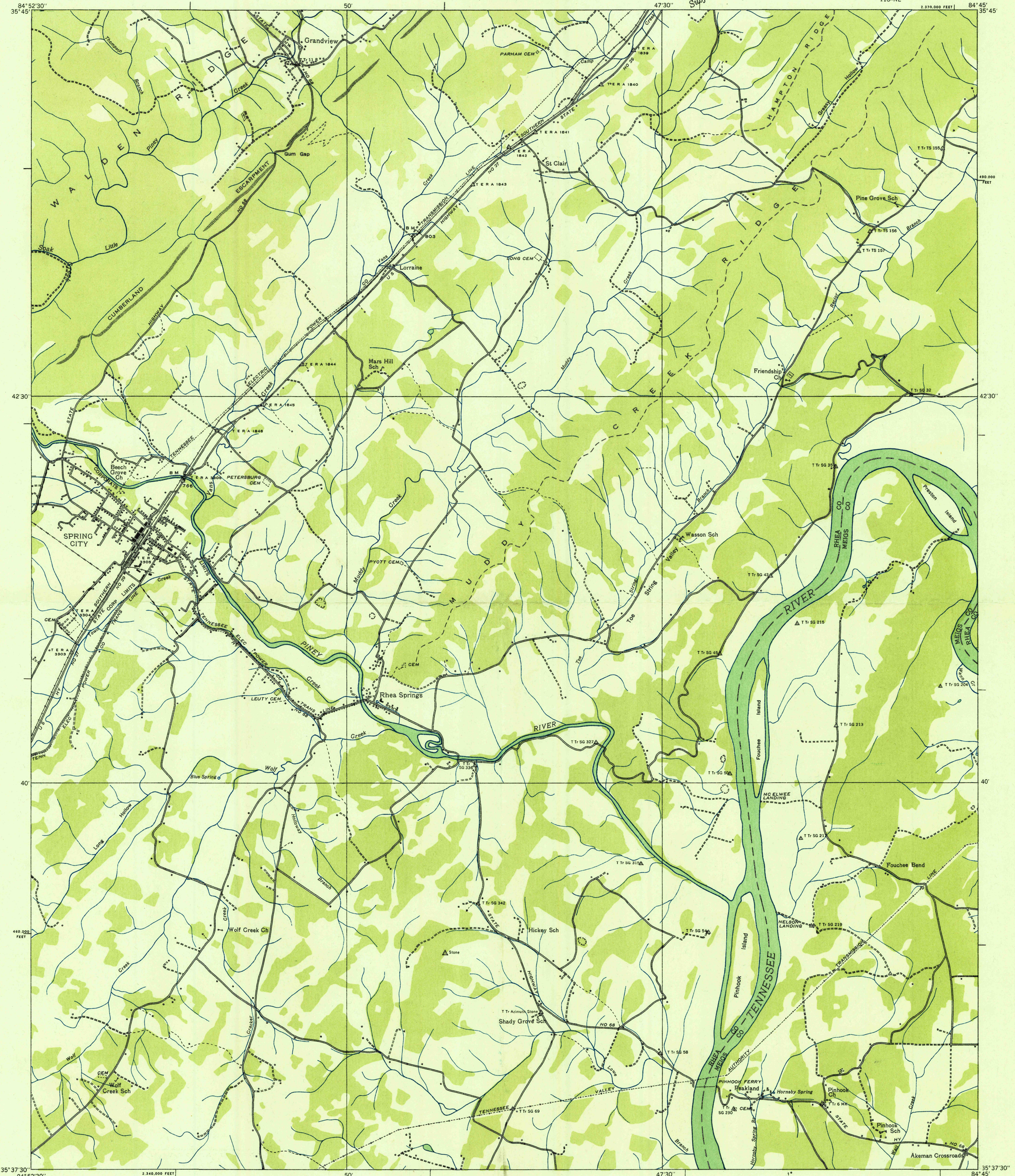
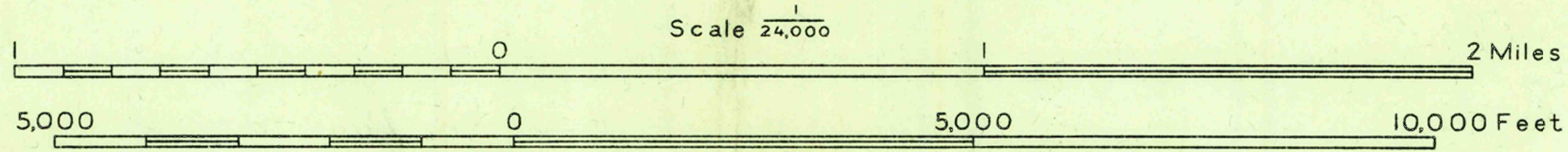


Advance sheet  
Subject to correction



Albert Pike, Division Engineer  
Compiled by U. S. Geological Survey from aerial photographs  
Control by U. S. Geological Survey, U. S. Coast and Geodetic Survey,  
Tennessee Valley Authority and Tenn. Em. Rel. Adm.  
Field examination in 1935 and 1936



Datum is mean sea level

USGS  
HISTORICAL FILE  
TOPOGRAPHIC DIVISION  
Ridge line  
Trail  
Sinks  
Rim Rock  
7 1/2' SPRING CITY, TENN.  
118-NE

Polyconic projection. 1927 North American datum  
10,000 foot grid based on Tennessee  
rectangular coordinate system  
APPROXIMATE MEAN  
MAGNETIC NORTH  
DECLINATION, 1935