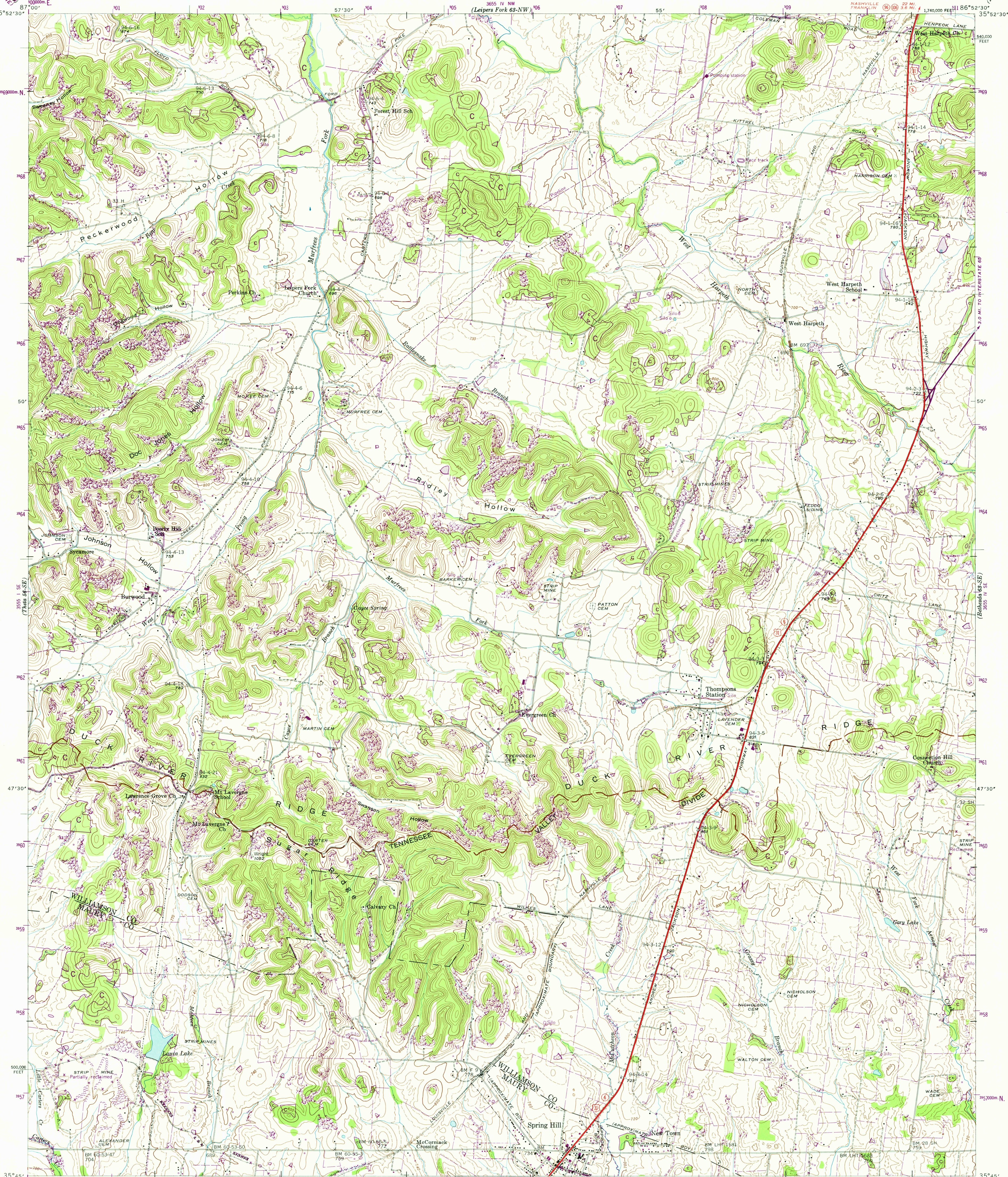


UNITED STATES
DEPARTMENT OF THE INTERIOR
GEOLOGICAL SURVEY

UNITED STATES
TENNESSEE VALLEY AUTHORITY
MAPS AND SURVEYS BRANCH

TENNESSEE
SPRING HILL QUADRANGLE
63-SW



Control by USC&GS, USGS, and TVA
Topography by USGS and TVA from aerial
photographs by stereophotogrammetric methods
Field examination by Tennessee Valley Authority, 1946

Maps distributed by the Geological Survey

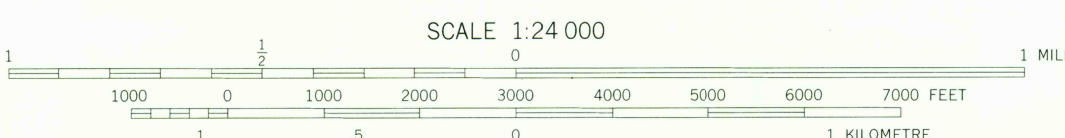
1000-metre Universal Transverse Mercator grid ticks,
zone 16, shown in blue

Grid declination 0°02' 1 mi West

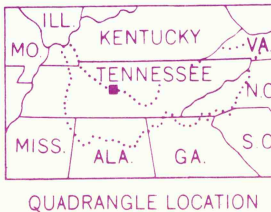
Revisions in purple compiled by TVA, July 1967 from
March 1966 photography without field examination

No larger scale topographic maps available from TVA.

APPROXIMATE MEAN
DECLINATION, 1967



Contour interval 20 feet
Occasional 10 foot contours shown by broken lines
National geodetic vertical datum of 1929



QUADRANGLE LOCATION

LEGEND

- Fence and field line
- Stream
- Pond and dam
- Strip mine
- Woodland (formerly clearing)
- Clearing (formerly woodland)
- General deletion
- Heavy duty road
- Light-duty road
- Poor motor road
- Wagon and jeep track
- Foot trail

Polyconic projection, 1927 North American datum
10,000 foot grid based on Tennessee
rectangular coordinate system

ROUTES USUALLY TRAVELED
HARD, IMPERVIOUS SURFACES
OTHER SURFACE IMPROVEMENTS
U. S. ROUTE STATE ROUTE

SPRING HILL, TENN.

63-SW

USGS
Historical File
Topographic Division

1946
N3545-W8652.5/7.5
AMS 3655 IV SW-SERIES V841
5 1975

FOR SALE BY U. S. GEOLOGICAL SURVEY, RESTON, VIRGINIA 22092
AND U. S. TENNESSEE VALLEY AUTHORITY, CHATTANOOGA 37401, OR KNOXVILLE, TENNESSEE 37902

2/14/75
150PL
2500GR
5088
PR
67
63-SW