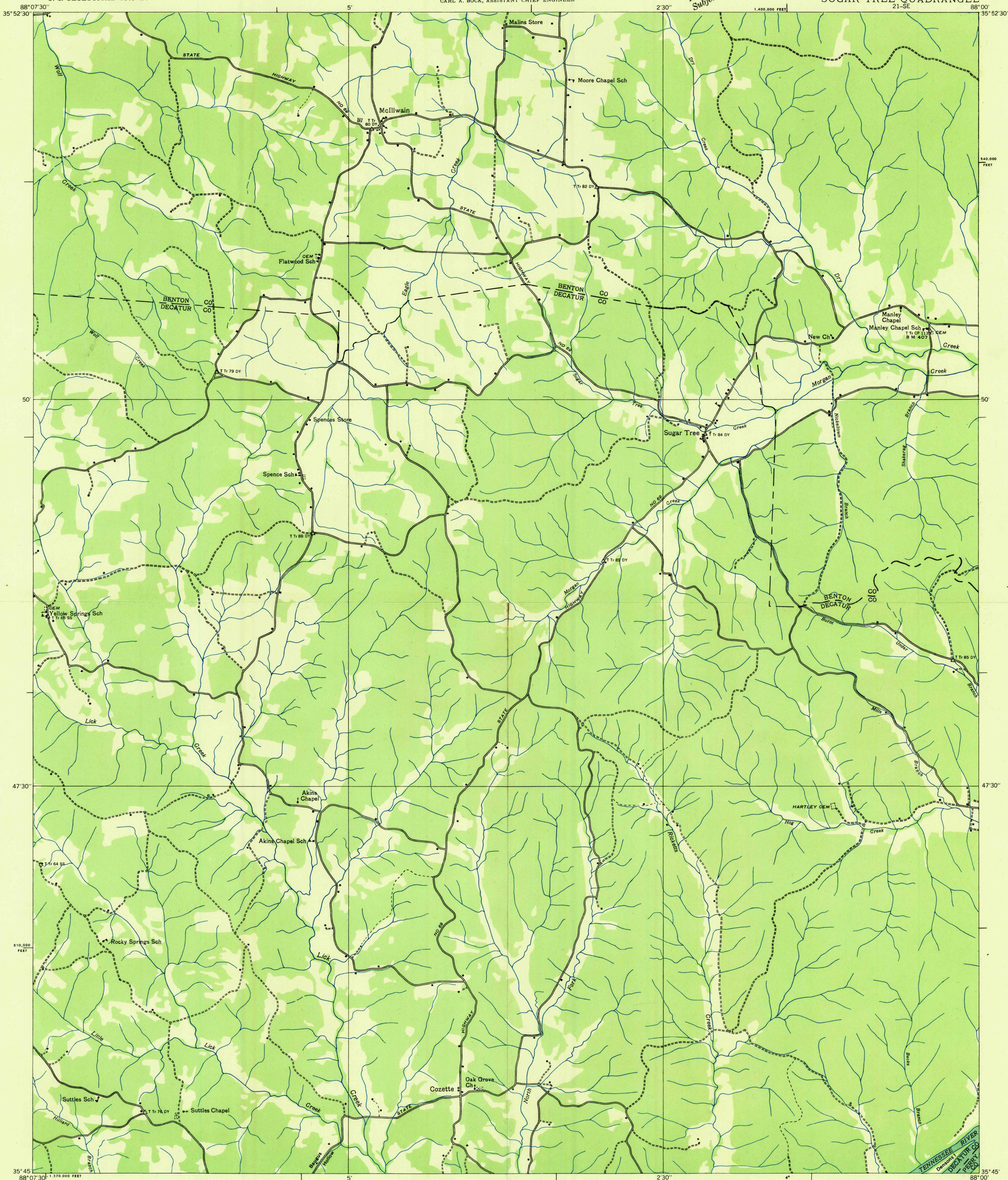
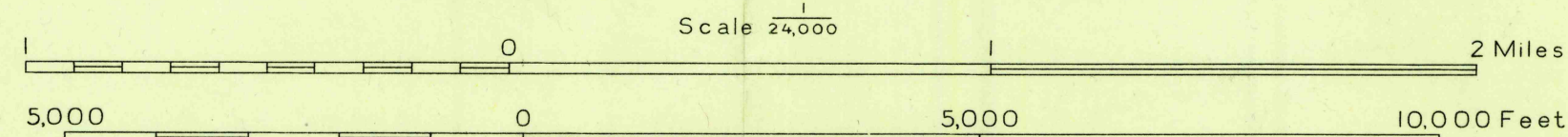


Advance sheet  
Subject to correction



Albert Pike, Division Engineer  
Compiled by U. S. Geological Survey from aerial photographs  
Control by U. S. Geological Survey and Tennessee Valley Authority  
Field examination in 1936



USGS APPROXIMATE MEAN  
DECLINATION, 1936  
HISTORICAL FILE  
TOPOGRAPHIC DIVISION

Polyconic projection. 1927 North American datum  
10,000 foot grid based on Tennessee  
rectangular coordinate system

Trail  
Probable drainage  
SUGAR TREE, TENN.  
21-SE