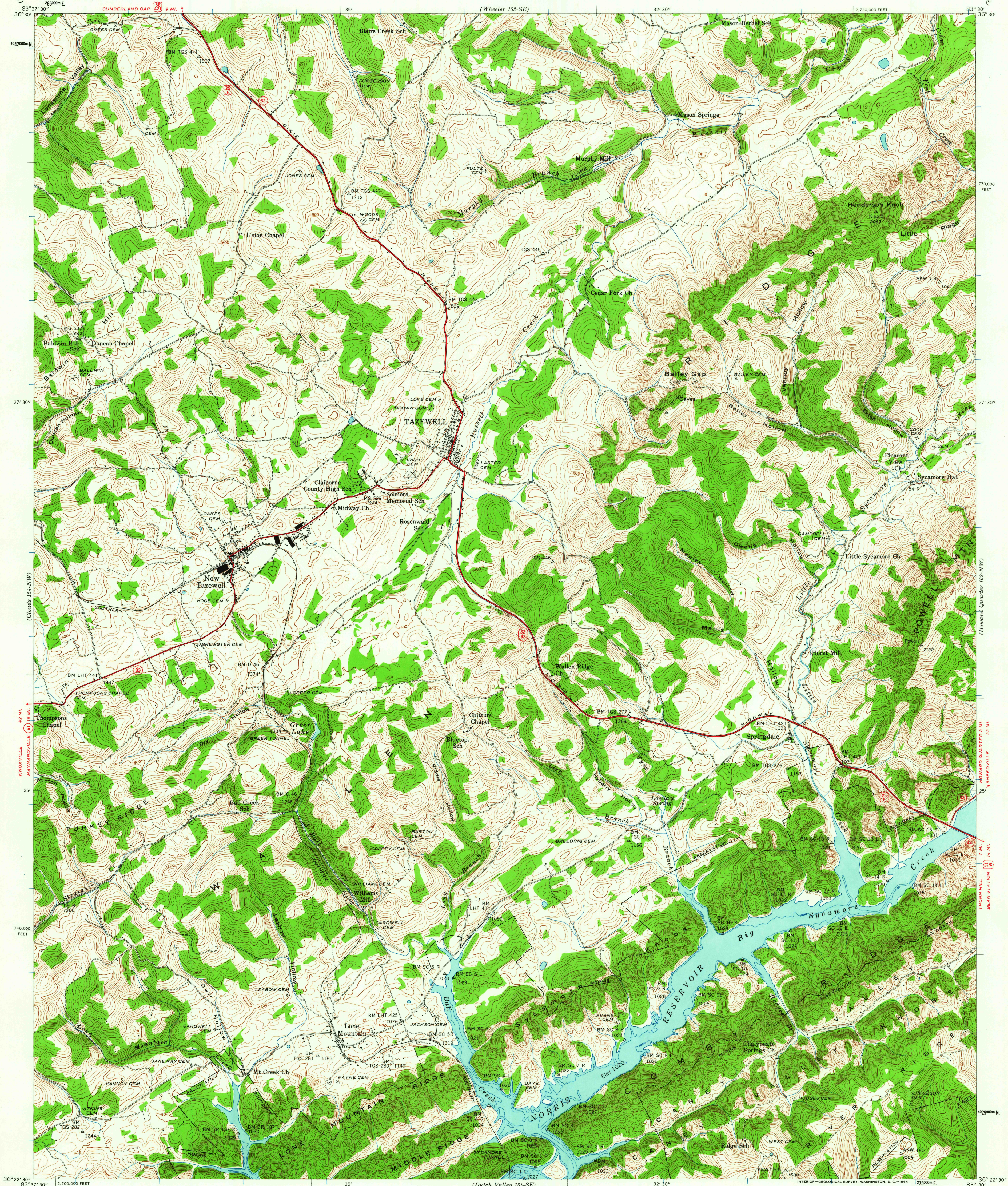


UNITED STATES
DEPARTMENT OF THE INTERIOR
GEOLOGICAL SURVEY

UNITED STATES
TENNESSEE VALLEY AUTHORITY
MAPS AND SURVEYS DIVISION

TENNESSEE
(CLAIBORNE COUNTY)
TAZEWELL QUADRANGLE
154-NE



Control by USC&GS, USGS, and TVA
Topography by Geological Survey from aerial
photographs by Stereophotogrammetric methods
Field examination by Tennessee Valley Authority, 1943
Maps distributed by the Geological Survey

MAGNETIC NORTH
TRUE NORTH
APPROXIMATE MEAN
DECLINATION, 1943

SCALE 1:24,000
CONTOUR INTERVAL 20 FEET
DATUM IS MEAN SEA LEVEL

USGS
HISTORICAL FILE
TOPOGRAPHIC DIVISION

Public projection, 1927 North American datum
10,000-foot grid based on Tennessee
rectangular coordinate system
1000-meter Universal Transverse Mercator grid ticks,
zone 17, shown in blue
ROUTES USUALLY TRAVELED
HARD, IMPERVIOUS SURFACES
OTHER SURFACE IMPROVEMENTS
U.S. ROUTE
STATE ROUTE

FOR SALE BY U. S. GEOLOGICAL SURVEY, WASHINGTON 25, D. C.,
TENNESSEE DIVISION OF GEOLOGY, NASHVILLE, TENN.,
AND U. S. TENNESSEE VALLEY AUTHORITY, CHATTANOOGA OR KNOXVILLE, TENN.
A FOLDER DESCRIBING TOPOGRAPHIC MAPS AND SYMBOLS IS AVAILABLE ON REQUEST

TAZEWELL, TENN.
154-NE
N3622.5-W8330/7.5
1943

1015