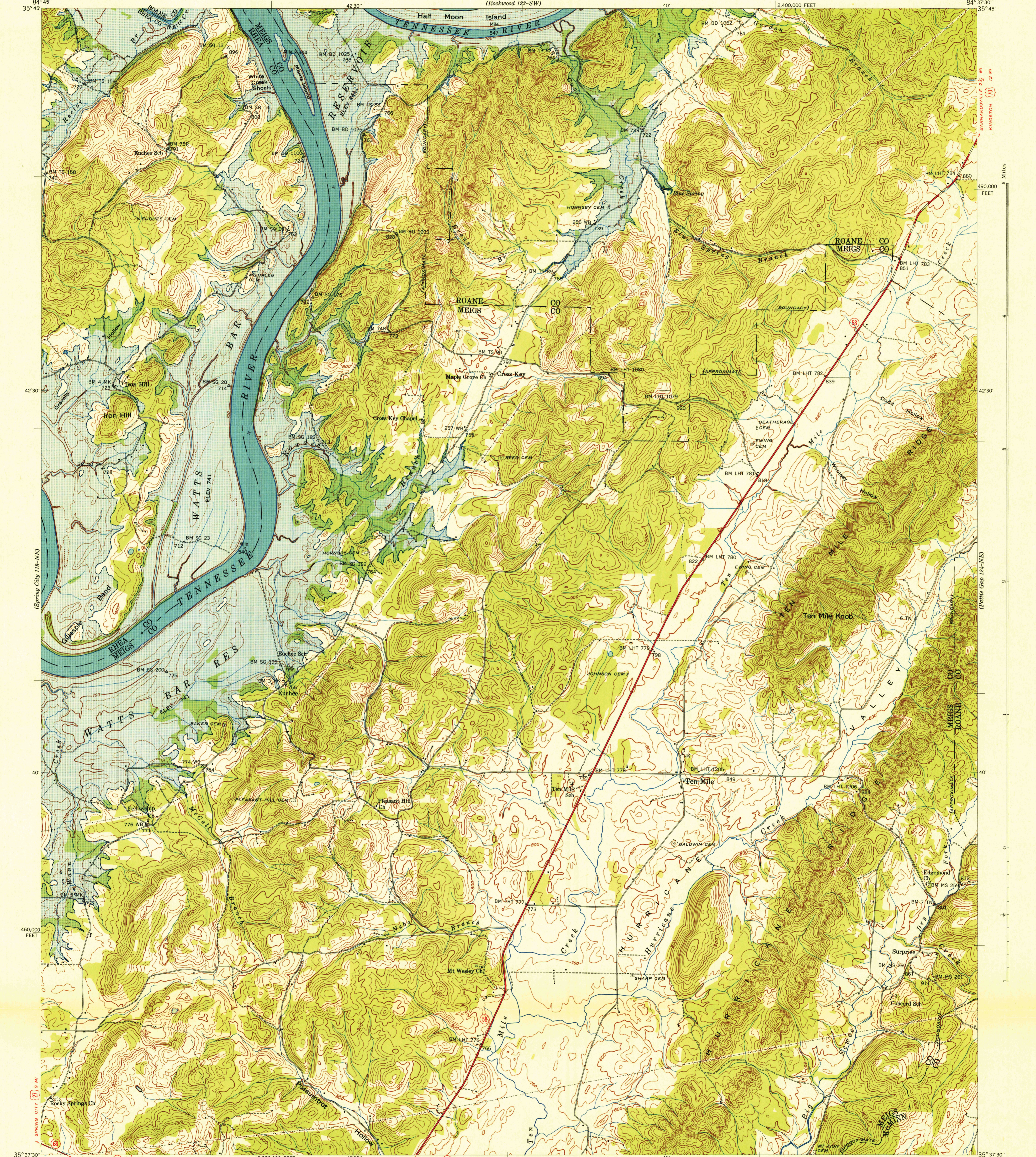


U.S.G.S.
FILE COPY
Inspection and Editing.

UNITED STATES
DEPARTMENT OF THE INTERIOR
GEOLOGICAL SURVEY

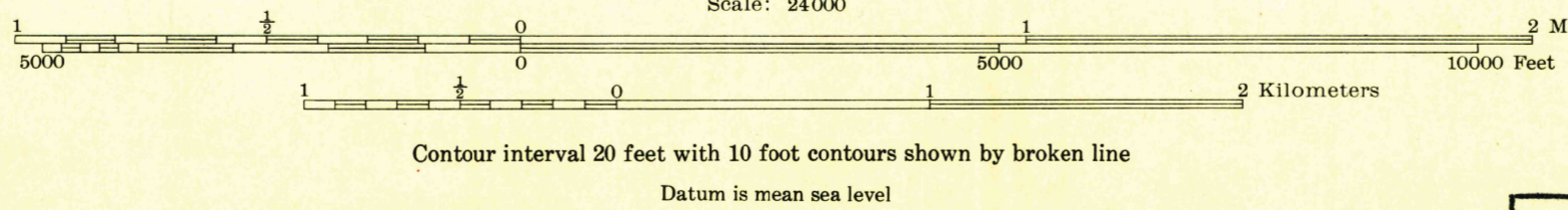
UNITED STATES
TENNESSEE VALLEY AUTHORITY
MAPS AND SURVEYS DIVISION
(Rockwood 123-SW)

TENNESSEE
TEN MILE QUADRANGLE
124-NW



Control by USC & GS, USGS, and TVA
Topography by Geological Survey from aerial
photographs by stereophotogrammetric methods.
Field examination by Tennessee Valley Authority—1940

APPROXIMATE MEAN
DECLINATION, 1940



USGS
HISTORICAL FILE
TOPOGRAPHIC DIVISION

Reproduced by the Coast and Geodetic Survey
Polyconic projection, 1927 North American datum
10,000 foot grid based on Tennessee
rectangular coordinate system

U.S.G.S.
FILE COPY
Inspection and Editing.

TEN MILE, TENN.
124-NW
Edition of 1940
N 3537.5—W 8437.5/7.5

APR 28 1941