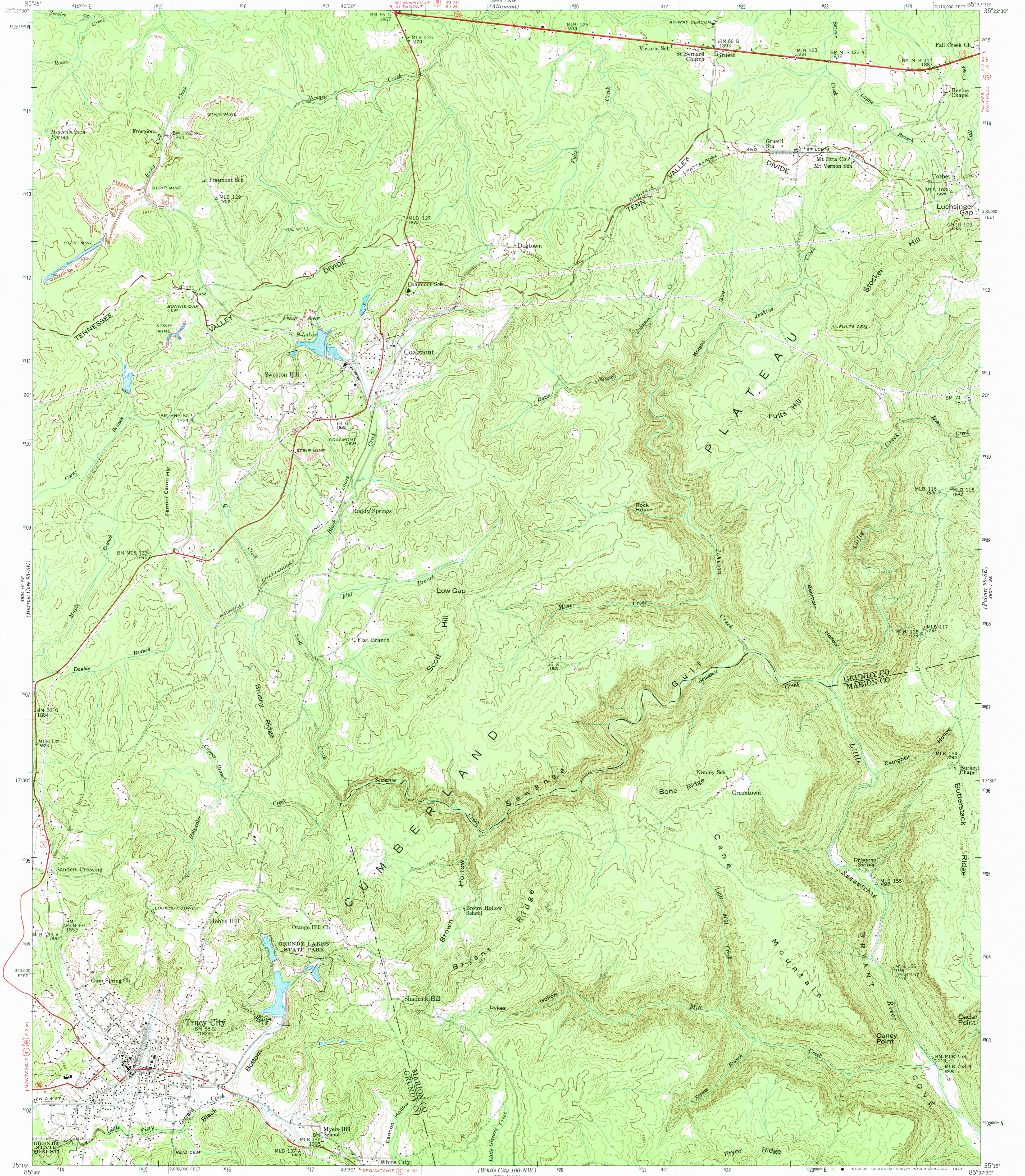


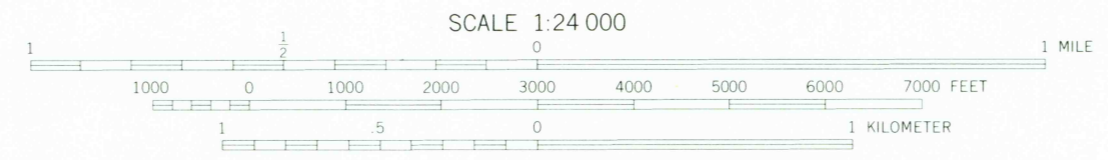
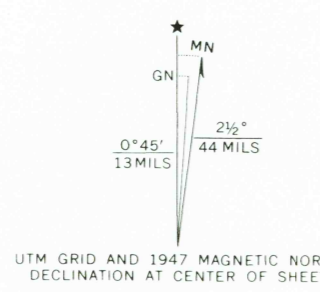
(Contour Interval 20'-20')

(Contour Interval 20'-20')



(Montealegre 94'-1/2" 1:62,500)

Control by US&GS, USGS, and TVA
Topography by USGS and TVA from aerial photographs by stereophotogrammetric methods
Field examination by Tennessee Valley Authority, 1947
Maps distributed by the Geological Survey
THIS MAP COMPLIES WITH NATIONAL MAP ACCURACY STANDARDS
1000 meter Universal Transverse Mercator grid ticks, zone 16, shown in blue



Contour interval 20 feet
Datum is mean sea level

FOR SALE BY U. S. GEOLOGICAL SURVEY, WASHINGTON, D. C. 20242.
U. S. TENNESSEE VALLEY AUTHORITY, CHATTANOOGA, TENN. 37401 OR KNOXVILLE, TENN. 37902.
AND TENNESSEE DIVISION OF GEOLOGY, NASHVILLE, TENNESSEE 37219
A FOLDER DESCRIBING TOPOGRAPHIC MAPS AND SYMBOLS IS AVAILABLE ON REQUEST

USGS HISTORICAL FILE TOPOGRAPHIC DIVISION

Polyconic projection. 1927 North American datum
10,000 foot grid based on Tennessee rectangular coordinate system

ROUTES USUALLY TRAVELED
HARD, IMPERVIOUS SURFACES
OTHER SURFACE IMPROVEMENTS
U. S. ROUTE
STATE ROUTE

TRACY CITY, TENN.
99-SW
1947
N3515-W8537.5/7.5
AMS 3854 1 SW-SERIES V841

(White 100-NE)

JAN 10 1974