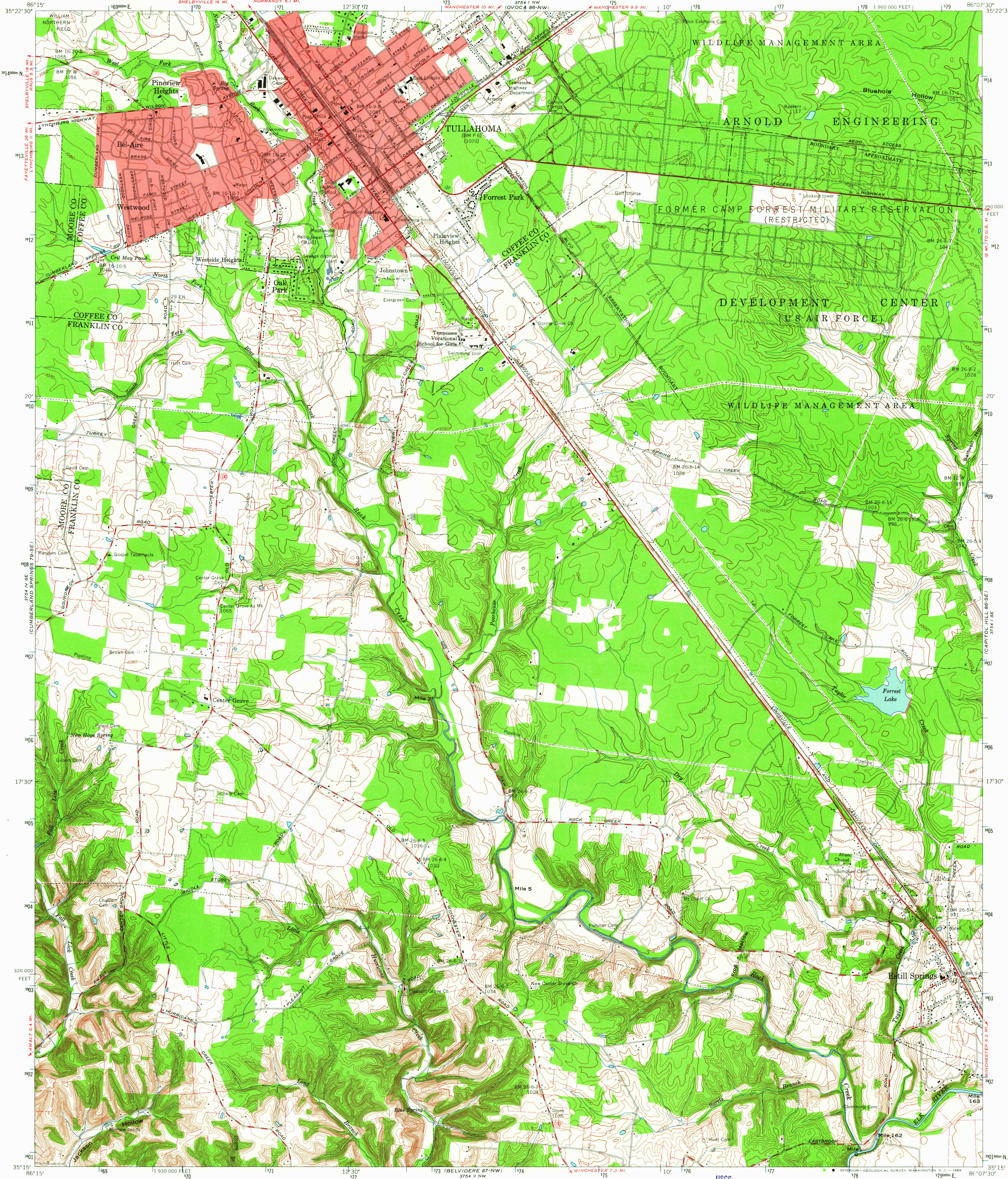


UNITED STATES
DEPARTMENT OF THE INTERIOR
GEOLOGICAL SURVEY

UNITED STATES
TENNESSEE VALLEY AUTHORITY
MAPS AND SURVEYS BRANCH

TULLAHOMA QUADRANGLE
TENNESSEE
7.5 MINUTE SERIES (TOPOGRAPHIC) 86-SW



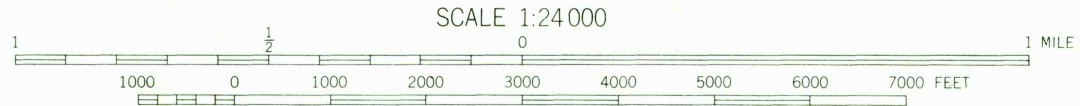
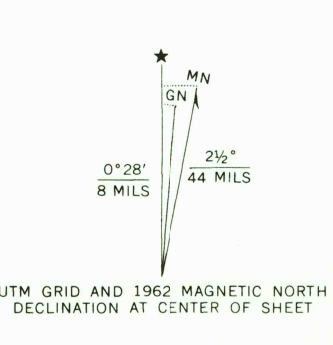
Mapped and edited by Tennessee Valley Authority
Published by the Geological Survey

Control by US&GS, USGS, WPA, and TVA

Revised by TVA in 1961 by photogrammetric methods using
aerial photographs taken 1960 and by reference to TVA-USGS
quadrangle dated 1941. Map field checked by TVA, 1962

Polyconic projection. 1927 North American datum
10,000-foot grid based on Tennessee rectangular
coordinate system
1000 meter Universal Transverse Mercator Grid ticks,
Zone 16, shown in blue

Fine red dashed lines indicate selected fence and field lines
visible on aerial photographs. This information is unchecked
Red tint indicates areas in which only landmark buildings are shown



CONTOUR INTERVAL 10 FEET
DATUM IS MEAN SEA LEVEL

THIS MAP COMPLIES WITH NATIONAL MAP ACCURACY STANDARDS
FOR SALE BY U.S. GEOLOGICAL SURVEY, WASHINGTON 25, D.C.
TENNESSEE DIVISION OF GEOLOGY, NASHVILLE, TENN.
U.S. TENNESSEE VALLEY AUTHORITY, CHATTANOOGA OR KNOXVILLE, TENN.

A FOLDER DESCRIBING TOPOGRAPHIC MAPS AND SYMBOLS IS AVAILABLE ON REQUEST

USGS
HISTORICAL FILE
TOPOGRAPHIC DIVISION



ROAD CLASSIFICATION
Heavy-duty Poor motor road
Medium-duty Wagon and jeep track
Light-duty Foot trail
In developed areas, only through roads are classified

USGS
FILE COPY
TOPOGRAPHIC DIVISION

TULLAHOMA, TENN.
N3515-W8607.5/7.5

1962

AMS 3754 I SW-SERIES V841

MAR 17 1965

2380