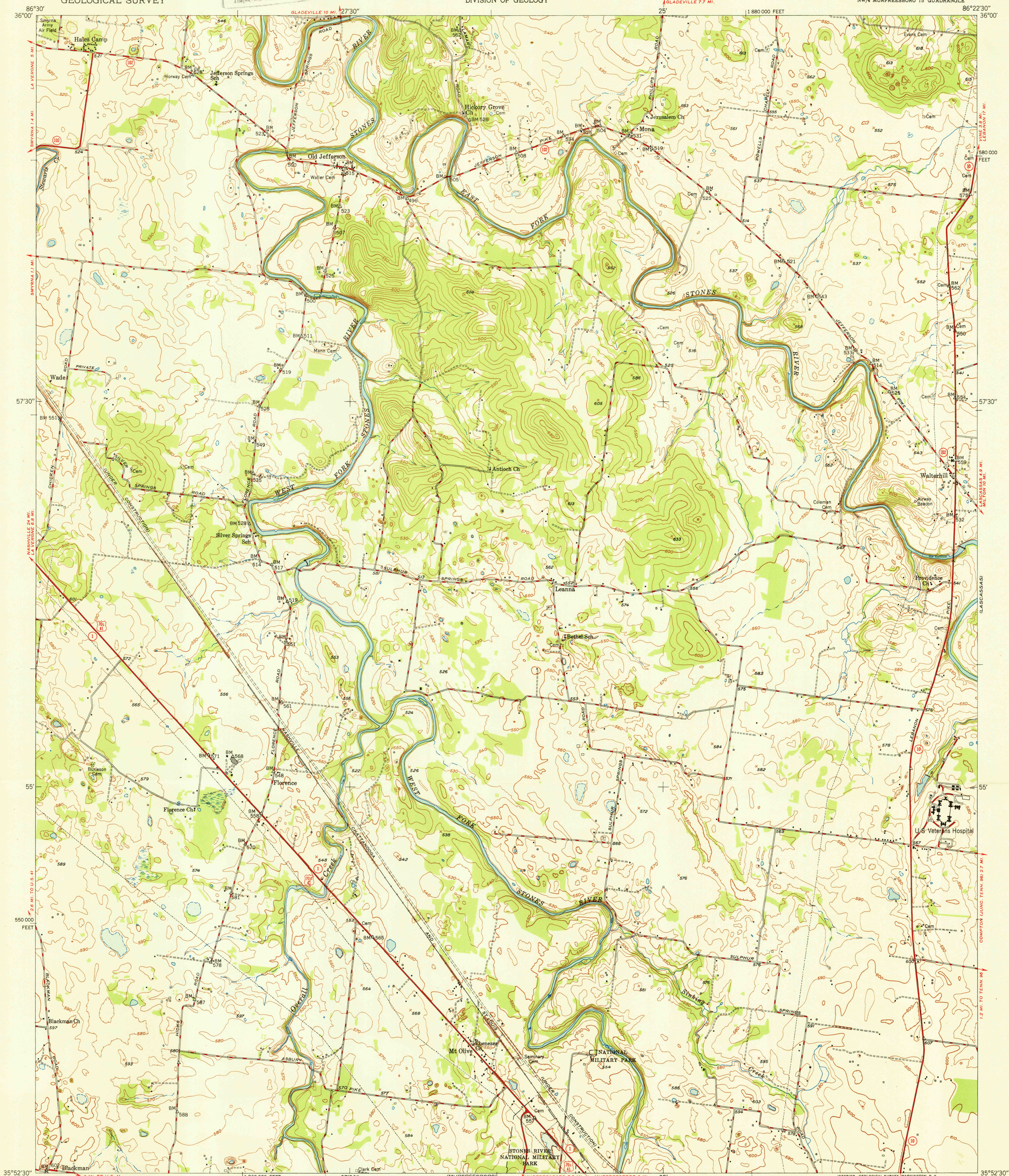
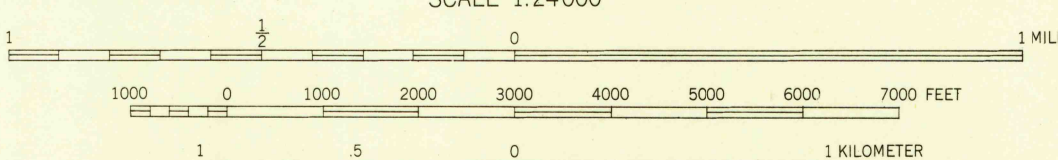


U.S.G.S.
FILE COPY
Inspection and Mapping



Maped by the Geological Survey and the Corps of Engineers
Edited and published by the Geological Survey
Control by USGS, USC&GS, USED, and TVA
Culture and drainage in part compiled from aerial photographs
Topography by multiplex methods 1944
and plane-table surveys 1949-1950
Polyconic projection. 1927 North American datum
10,000-foot grid based on Tennessee coordinate system

TRUE NORTH
MAGNETIC NORTH
APPROXIMATE MEAN
DECLINATION, 1950



CONTOUR INTERVAL 10 FEET
DATUM IS MEAN SEA LEVEL

THIS MAP COMPLIES WITH NATIONAL MAP ACCURACY STANDARDS
FOR SALE BY U. S. GEOLOGICAL SURVEY, WASHINGTON 25, D. C.
A FOLDER DESCRIBING TOPOGRAPHIC MAPS AND SYMBOLS IS AVAILABLE ON REQUEST

USGS
HISTORICAL FILE
TOPOGRAPHIC DIVISION

U.S.G.S.
FILE COPY
Inspection and Mapping

ROAD CLASSIFICATION
HARD-SURFACE ALL WEATHER ROADS DRY WEATHER ROADS
Heavy-duty 4 LANE 6 LANE Improved dirt
Medium-duty 4 LANE 6 LANE Unimproved dirt
Loose-surface, graded, or narrow hard-surface
U. S. Route State Route

WALTERHILL, TENN.
NW/4 MURFREESBORO 15' QUADRANGLE
N 3652.5-W 8622.5/7.5

EDITION OF 1950

DEC 12 1950

2120