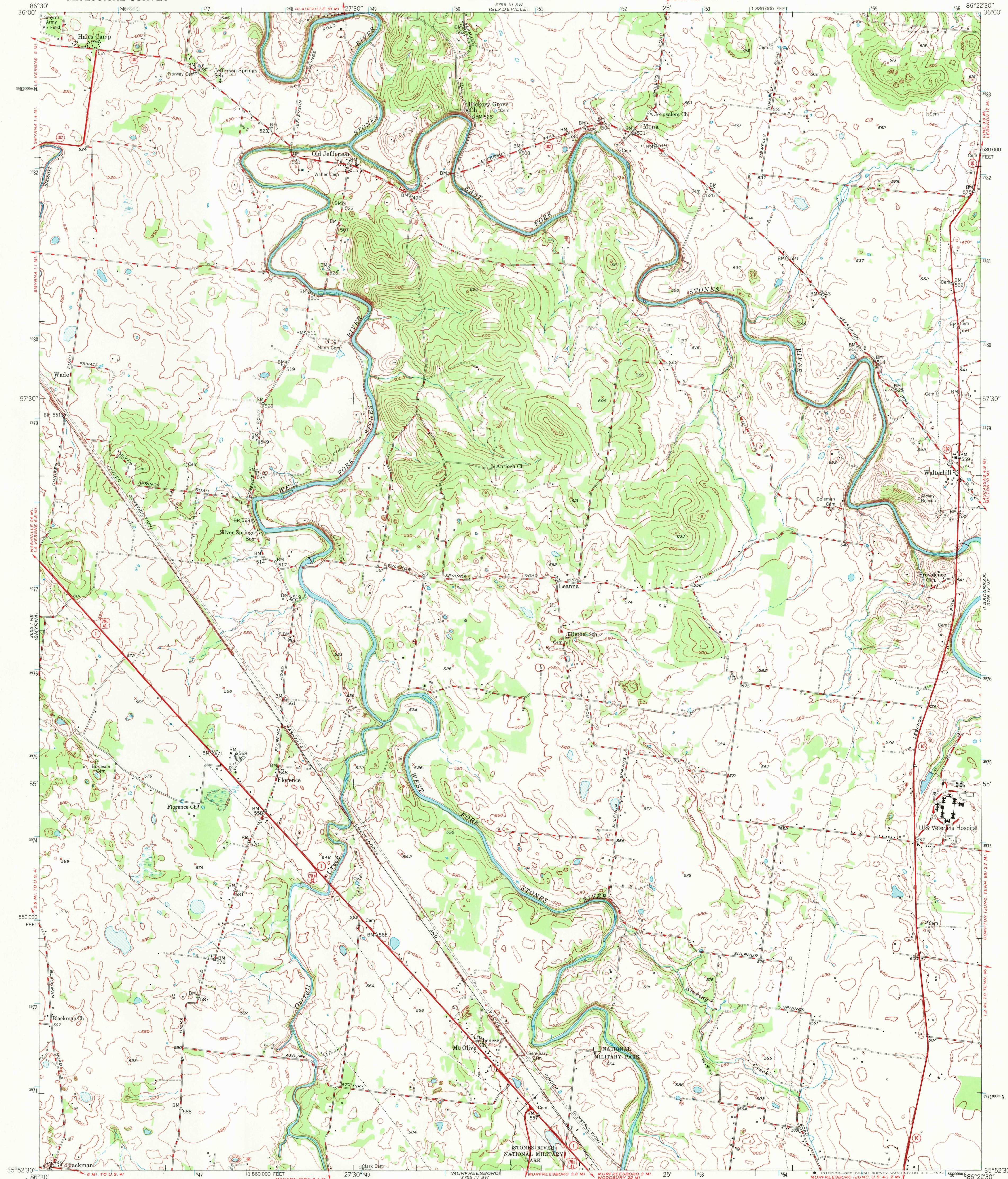


UNITED STATES  
DEPARTMENT OF THE INTERIOR  
GEOLOGICAL SURVEY

STATE OF TENNESSEE  
DEPARTMENT OF CONSERVATION  
DIVISION OF GEOLOGY

WALTERHILL QUADRANGLE  
TENNESSEE-RUTHERFORD CO.  
7.5 MINUTE SERIES (TOPOGRAPHIC)  
NW/4 MURFREESBORO 15' QUADRANGLE



Maped by the Geological Survey and the Corps of Engineers  
Edited and published by the Geological Survey  
Control by USGS, USC&GS, USED, and TVA  
Culture and drainage in part compiled from aerial photographs  
Topography by multiplex methods 1944  
and plane-table surveys 1949-1950  
Polyconic projection. 1927 North American datum  
10,000-foot grid based on Tennessee coordinate system  
1000-meter Universal Transverse Mercator grid ticks,  
zone 15, shown in blue

SCALE 1:24,000  
1 0 1000 2000 3000 4000 5000 6000 7000 FEET  
1 5 10 KILOMETER

CONTOUR INTERVAL 10 FEET  
DATUM IS MEAN SEA LEVEL

THIS MAP COMPLIES WITH NATIONAL MAP ACCURACY STANDARDS  
FOR SALE BY U. S. GEOLOGICAL SURVEY, WASHINGTON, D. C. 20242,  
AND TENNESSEE DIVISION OF GEOLOGY, NASHVILLE, TENNESSEE 37219  
A FOLDER DESCRIBING TOPOGRAPHIC MAPS AND SYMBOLS IS AVAILABLE ON REQUEST

ROAD CLASSIFICATION  
HARD-SURFACE ALL WEATHER ROADS DRY WEATHER ROADS  
Heavy-duty ———— 2 LANE 6 LANE Improved dirt ————  
Medium-duty ———— 2 LANE 6 LANE Unimproved dirt ————  
Loose-surface, graded, or narrow hard-surface ————  
U. S. Route ———— State Route ————

WALTERHILL, TENN.  
USGS  
HISTORICAL FILE  
TOPOGRAPHIC DIVISION  
N3552.5—W8622.5/7.5  
1950  
AMS 3755 IV NW—SERIES V841

JUL 6 1972