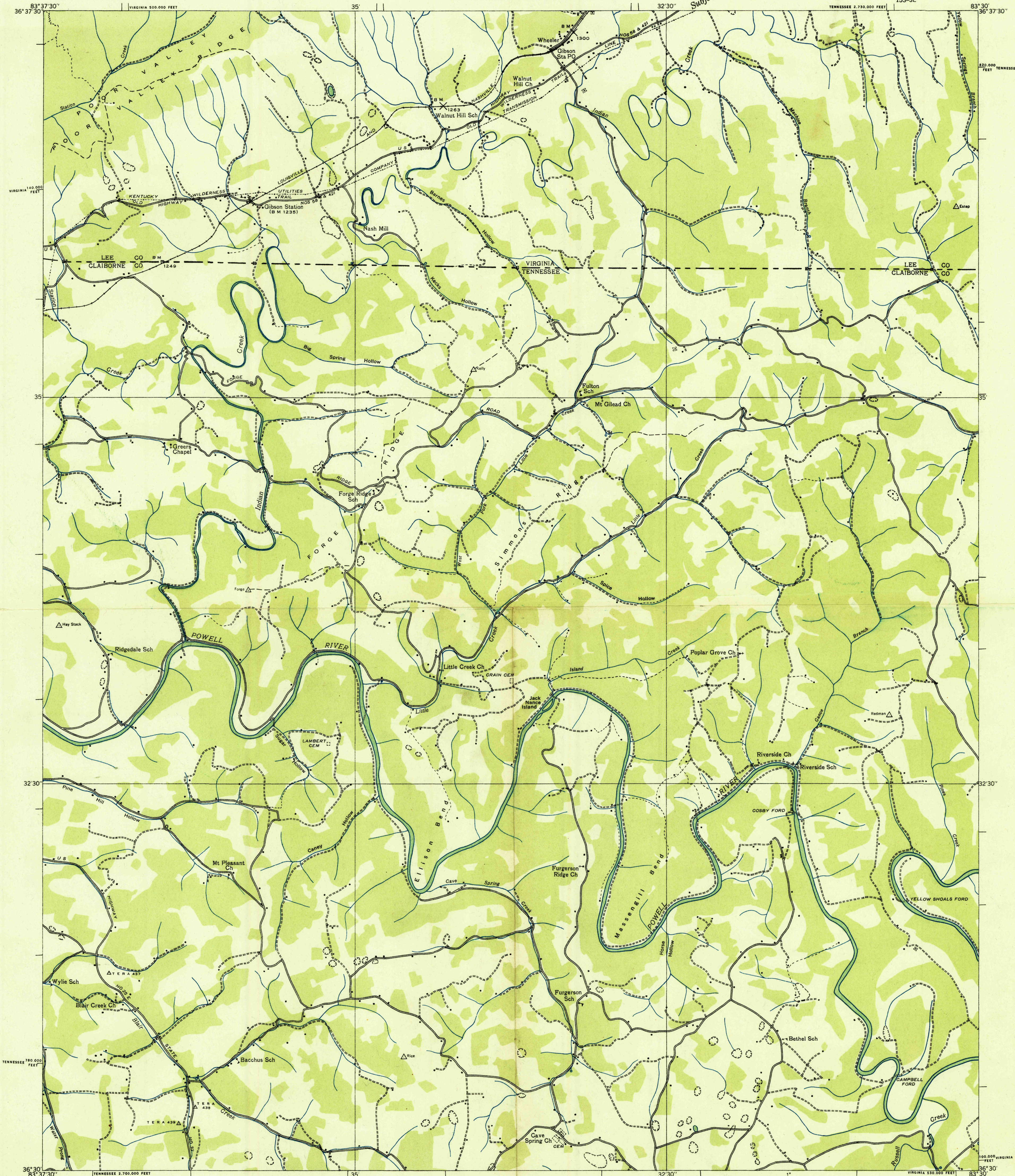
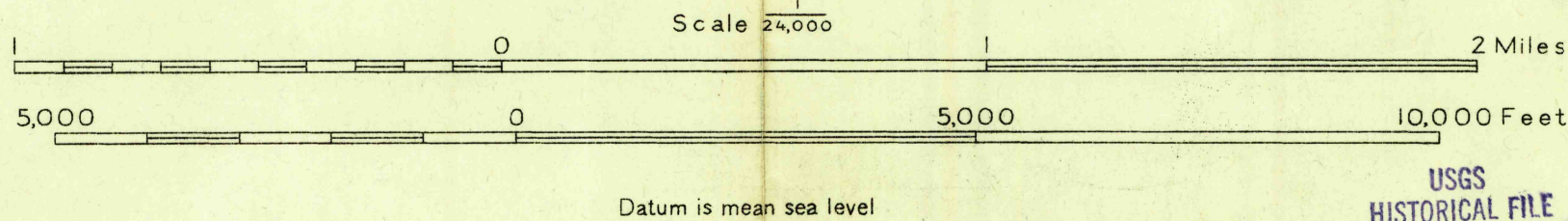


Advance sheet
Subject to correction



Albert Pike, Division Engineer
Compiled by U. S. Geological Survey from aerial photographs
Control by U. S. Geological Survey, U. S. Coast and Geodetic Survey and
Tenn. Em. Rel. Adm.
Field examination in 1935



TRUE NORTH
MAGNETIC NORTH
APPROXIMATE MEAN
DECLINATION, 1995

Polyconic projection. 1927 North American datum
10,000 foot grid based on Tennessee and
Virginia (South) rectangular coordinate systems

Ridge line
Trail
Sink
WHEELER, TENN.-VA.
153-SE

USGS
HISTORICAL FILE
TOPOGRAPHIC DIVISION