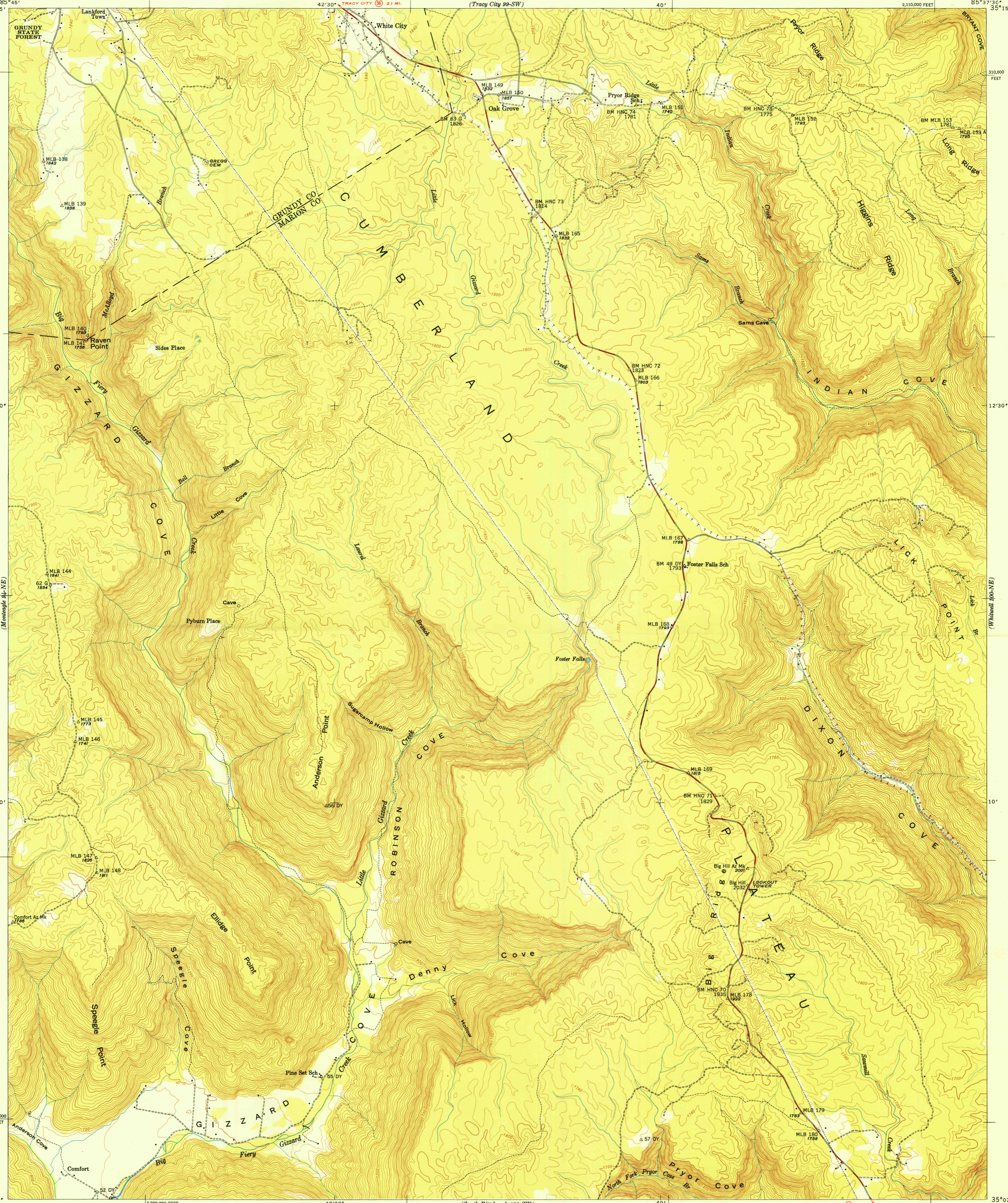
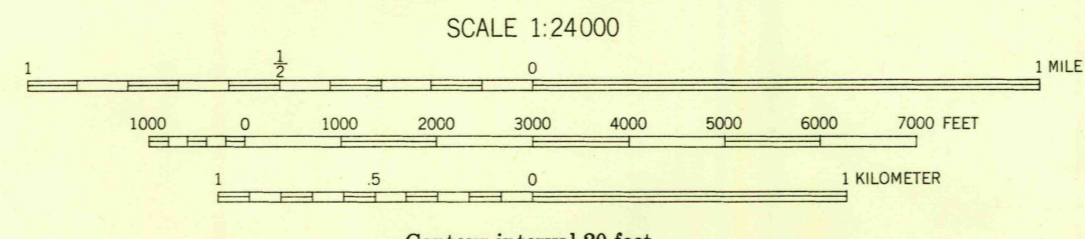


U.S.G.S.
FILE COPY
Inspection and Printing



Control by USC&GS, USGS, and TVA
Topography by USGS and TVA from aerial
photographs by stereophotogrammetric methods
Field examination by Tennessee Valley Authority, 1947
Maps distributed by the Geological Survey
THIS MAP COMPLIES WITH NATIONAL MAP ACCURACY STANDARDS

APPROXIMATE MEAN
DECLINATION, 1950



Contour interval 20 feet
Datum is mean sea level

USGS
HISTORICAL FILE
TOPOGRAPHIC DIVISION
U.S.G.S.
FILE COPY
Inspection and Printing

Polyconic projection, 1927 North American datum
10,000 foot grid based on Tennessee
rectangular coordinate system

ROUTES USUALLY TRAVELED
HARD, IMPERVIOUS SURFACES
OTHER SURFACE IMPROVEMENTS
(1) U. S. ROUTE (2) STATE ROUTE

WHITE CITY, TENN.
100-NW
Edition of 1950
N3507.5-W8537.5/7.5