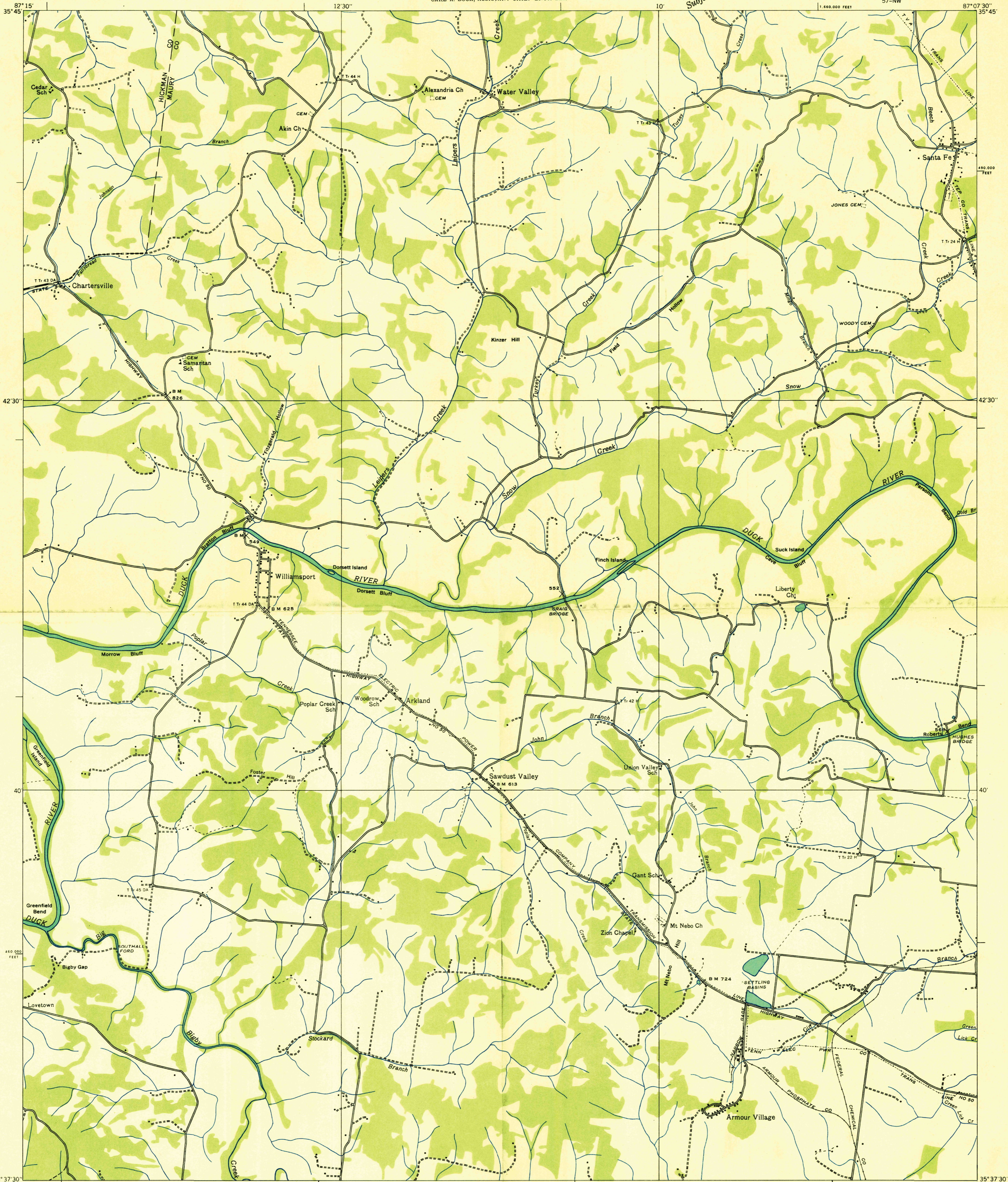
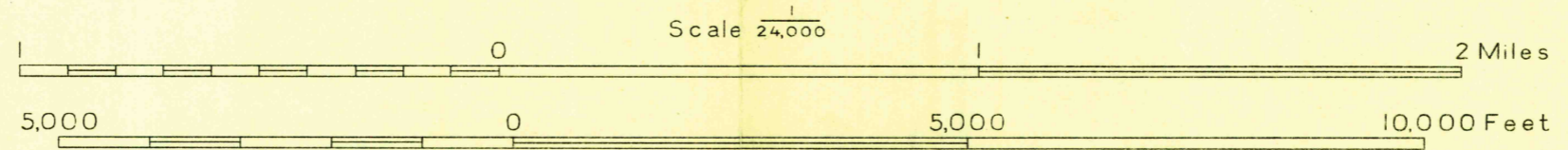


Advance sheet  
Subject to correction



Albert Pike, Division Engineer  
Compiled by U. S. Geological Survey from aerial photographs  
Control by U. S. Geological Survey, U. S. Coast and Geodetic Survey and  
Corps of Engineers, U. S. Army  
Field examination in 1936



Datum is mean sea level

Polyconic projection, 1927 North American datum  
10,000 foot grid based on Tennessee  
rectangular coordinate system  
USGS HISTORICAL FILE TOPOGRAPHIC DIVISION  
Ridge line  
Trail  
Probable drainage  
TRUE NORTH  
MAGNETIC NORTH  
APPROXIMATE MEAN DECLINATION, 1986

WILLIAMSPORT, TENN.  
57-NW