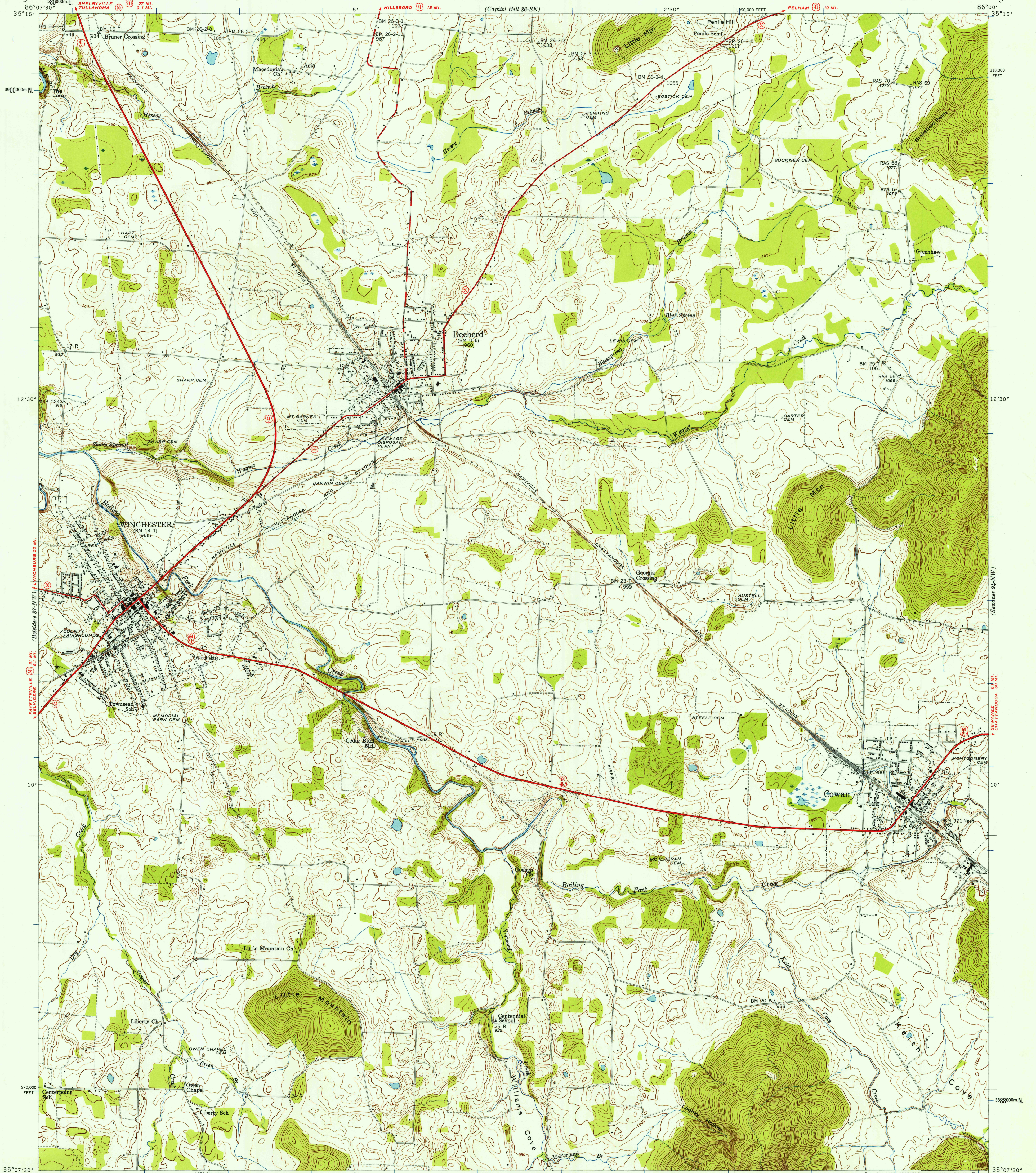


UNITED STATES
DEPARTMENT OF THE INTERIOR
GEOLOGICAL SURVEY

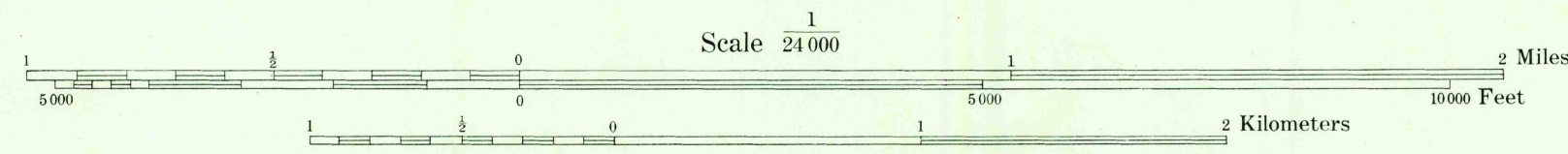
UNITED STATES
TENNESSEE VALLEY AUTHORITY
MAPS AND SURVEYS DIVISION

TENNESSEE
(FRANKLIN COUNTY)
WINCHESTER QUADRANGLE
87-NE



Control by USC&GS, USGS, WPA, and TVA
Topography by USGS and TVA from aerial
photographs by stereophotogrammetric methods
Field examination by Tennessee Valley Authority, 1947
Maps distributed by the Geological Survey

214°
TRUE NORTH
MAGNETIC NORTH
APPROXIMATE MEAN
DECLINATION, 1947



Contour interval 10 feet
Occasional 5 foot contours shown by broken lines
Datum is mean sea level
FOR SALE BY U. S. GEOLOGICAL SURVEY, WASHINGTON 25, D. C.
U. S. TENNESSEE VALLEY AUTHORITY, CHATTANOOGA OR KNOXVILLE, TENN.
AND TENNESSEE DIVISION OF GEOLOGY, NASHVILLE, TENN.
A FOLDER DESCRIBING TOPOGRAPHIC MAPS AND SYMBOLS IS AVAILABLE ON REQUEST

USGS
HISTORICAL FILE
TOPOGRAPHIC DIVISION

Reproduced 1968-USCOMM C95-DC-R-1862 501000m E. 86°00'00"
Polyconic projection, 1927 North American datum
10,000 foot grid based on Tennessee
rectangular coordinate system
1000-meter Universal Transverse Mercator
grid ticks, Zone 16, shown in blue
ROUTES USUALLY TRAVELED
HARD, IMPERVIOUS SURFACES
OTHER SURFACE IMPROVEMENTS
U. S. ROUTE STATE ROUTE

WINCHESTER, TENN.
87-NE
N3507.5 W8600/7.5
1947

FILE COPY
TOPOGRAPHIC DIVISION

1985
From Coast 2 Road

FEB 12 1963