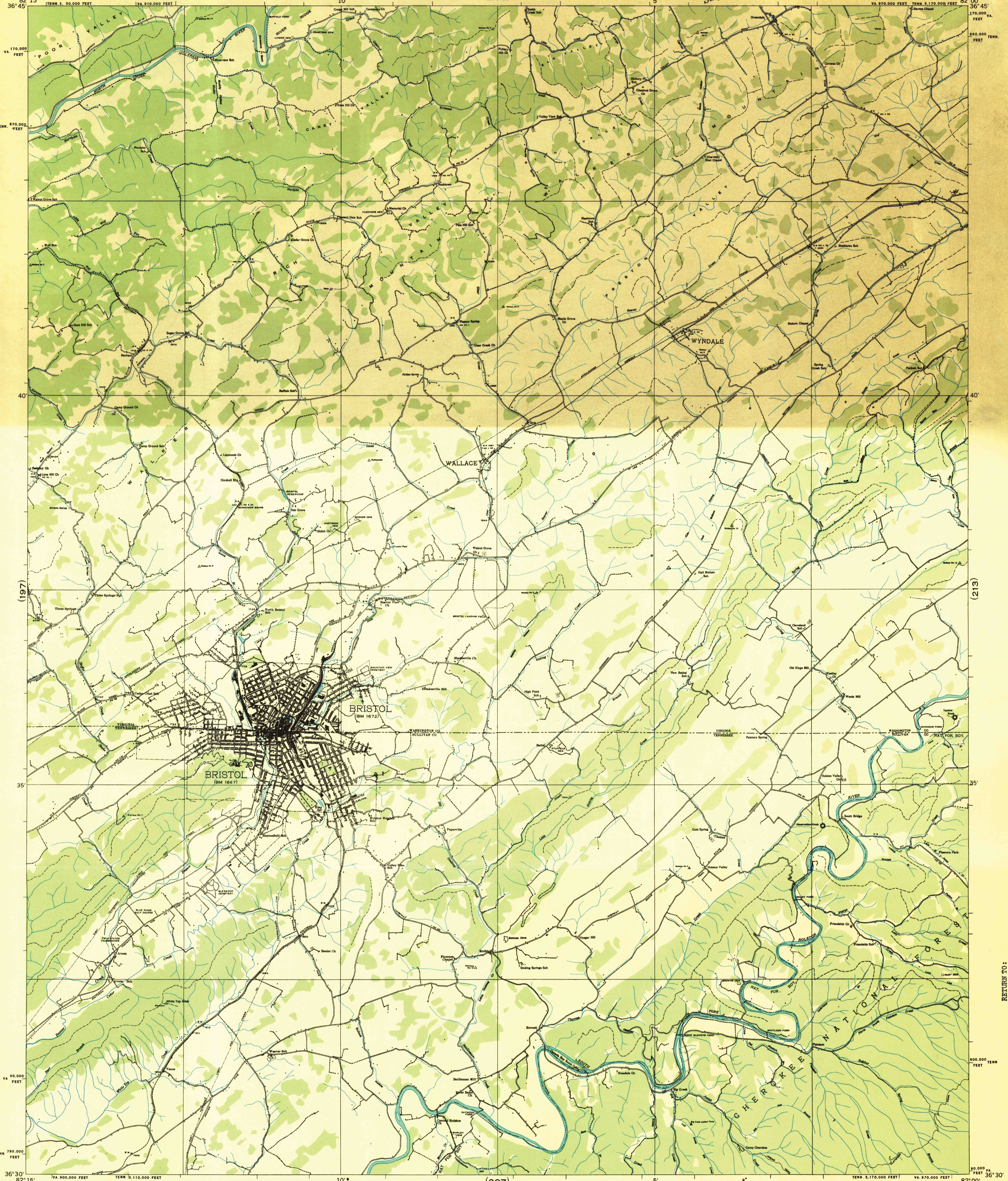
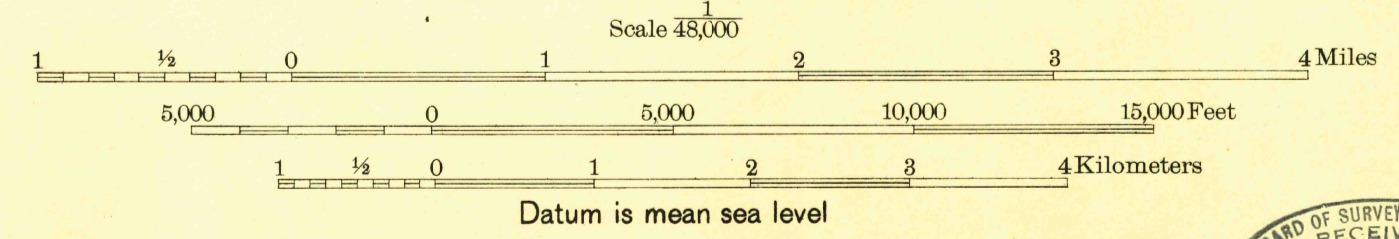


Advance sheet
Subject to correction



Albert Pike, Division Engineer
Compiled by U. S. Geological Survey from aerial photographs
Control by U. S. Geological Survey and U. S. Coast and Geodetic Survey
Field examination in 1935



BOARD OF SURVEYS AND MAPS RECEIVED
MAY 25 1937
SURVEY INFORMATION OFFICE

Polygonic projection. 1927 North American datum
10,000 foot grid based on Tennessee and Virginia (South)
rectangular coordinate systems

Ridge line
Trail
Sinks
BEAVER CREEK, TENN.-VA.
(206)
Historical File
Topographic Division

RETURN TO:
1988 AND HISTORICAL MAP ARCHIVES