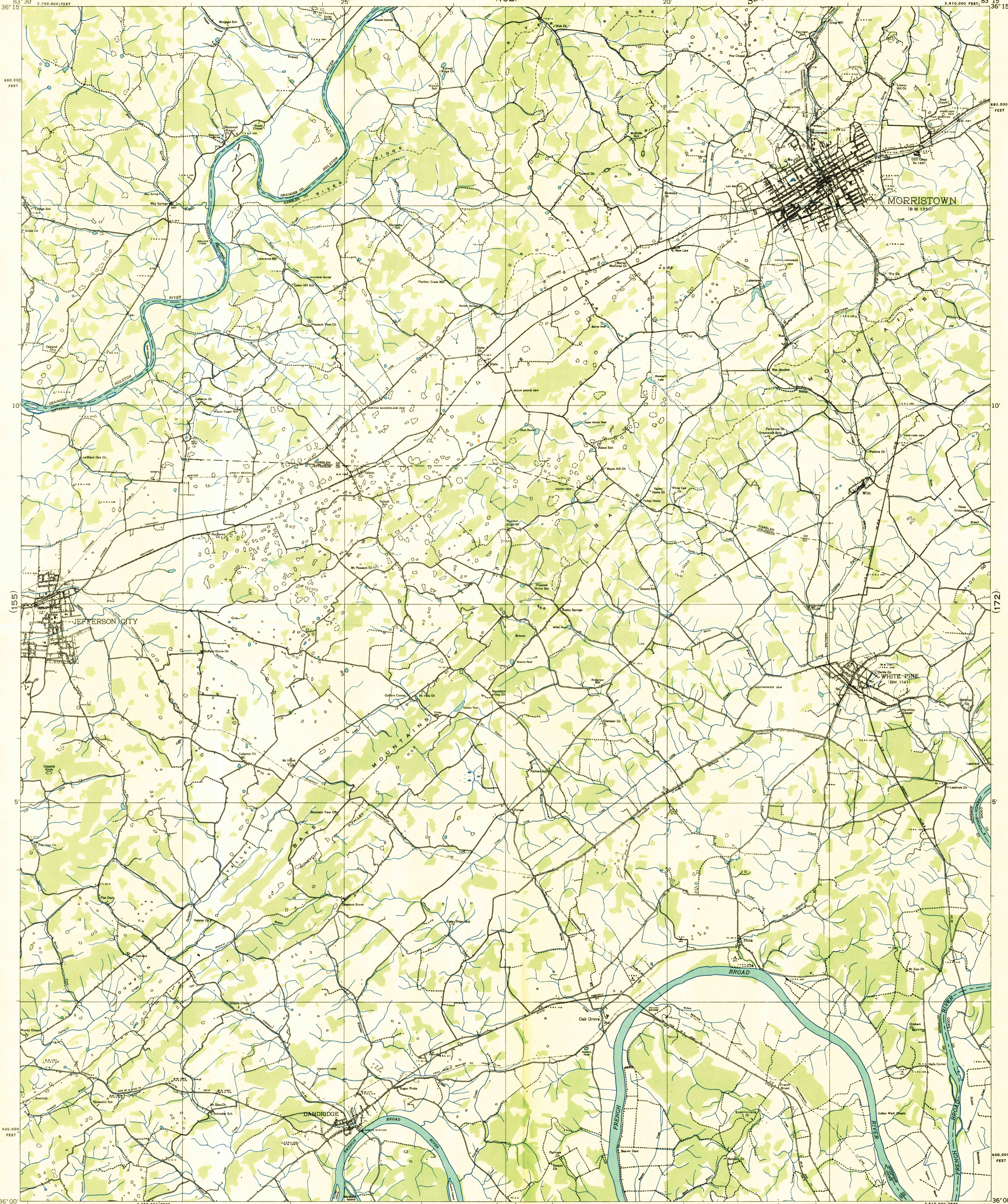
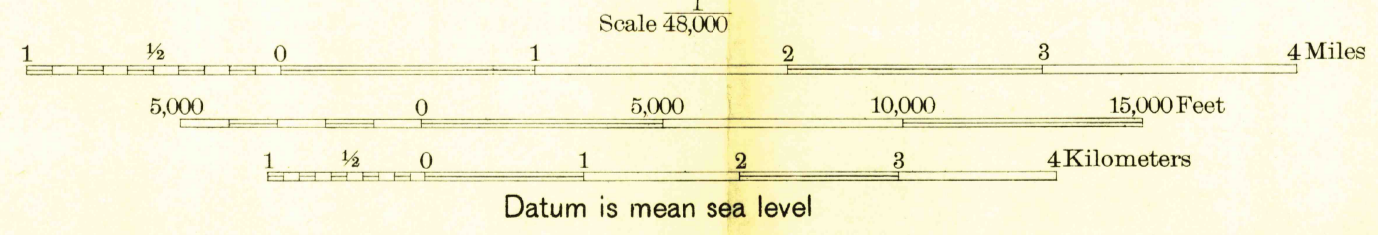


Advance sheet
Subject to correction



(155) Albert Pike, Division Engineer
Compiled by U. S. Geological Survey from aerial photographs
Control by U. S. Geological Survey, U. S. Coast and Geodetic Survey,
Corps of Engineers, U. S. Army, and Tenn. Em. Rel. Adm.
Field Examination in 1935



(173) Polyconic projection. 1927 North American Datum
10,000 foot grid based on Tennessee
rectangular coordinate system

APPROXIMATE MEAN
DECLINATION, 1985

USGS
HISTORICAL FILE
TOPOGRAPHIC DIVISION

Ridge line
Trail
Sinks
DANDRIDGE, TENN.
163