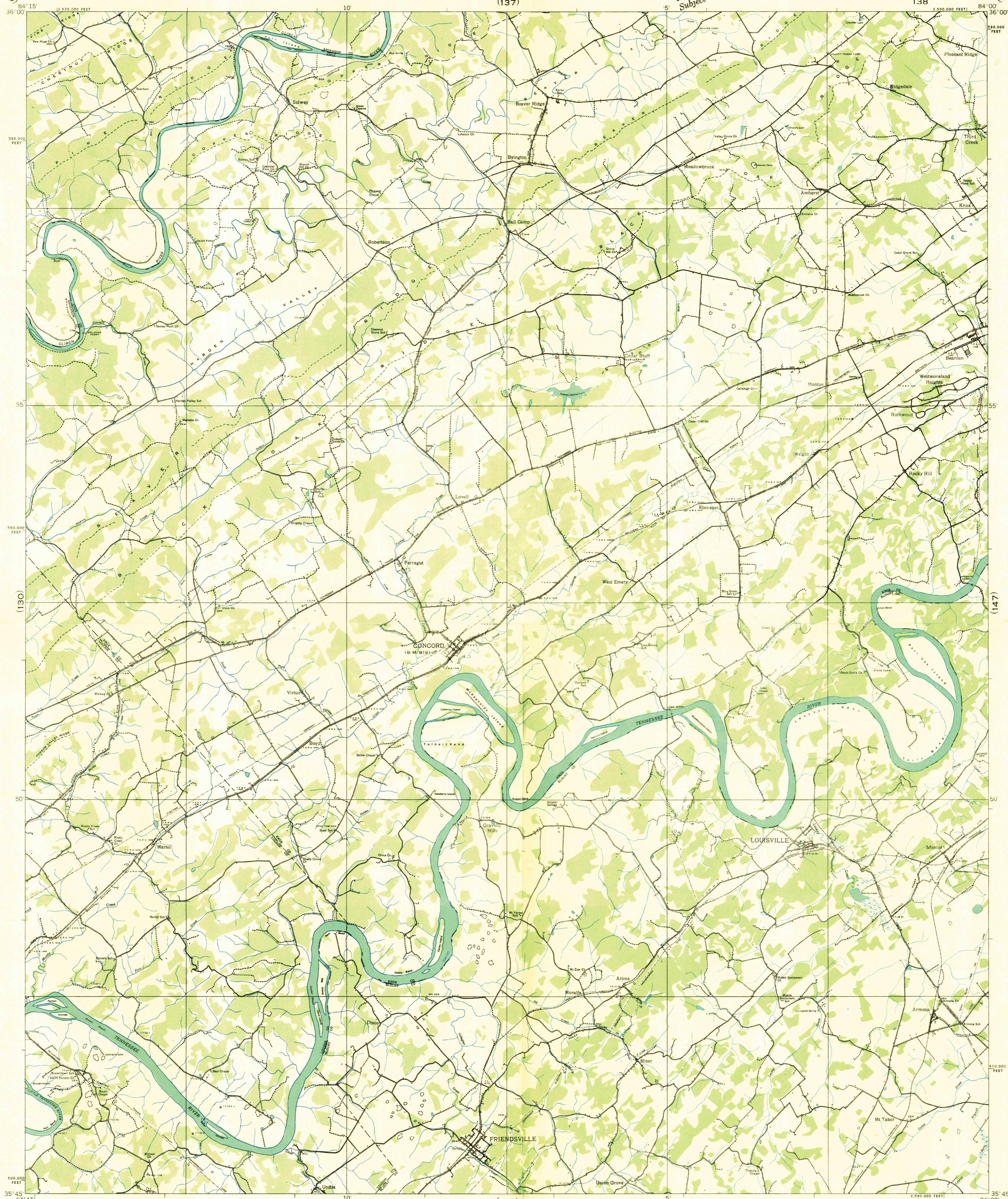
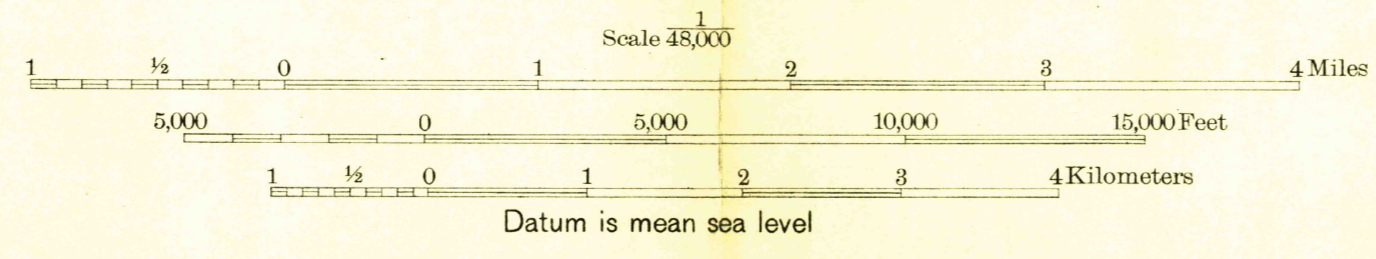


Advance sheet
Subject to correction



Albert Pike, Division Engineer
Compiled by U. S. Geological Survey from aerial photographs
Control by U. S. Geological Survey, U. S. Coast and Geodetic Survey,
Corps of Engineers, U. S. Army, Tennessee Valley Authority and
Terr. Em. Rel. Adm.
Field Examination in 1936



USGS
HISTORICAL FILE
TOPOGRAPHIC DIVISION

Polygonic projection. 1927 North American Datum
10,000 foot grid based on Tennessee
rectangular coordinate system

Ridge line
Trail
Sinks

APPROXIMATE MEAN
DECLINATION, 1936

FRIENDSVILLE, TENN.
138