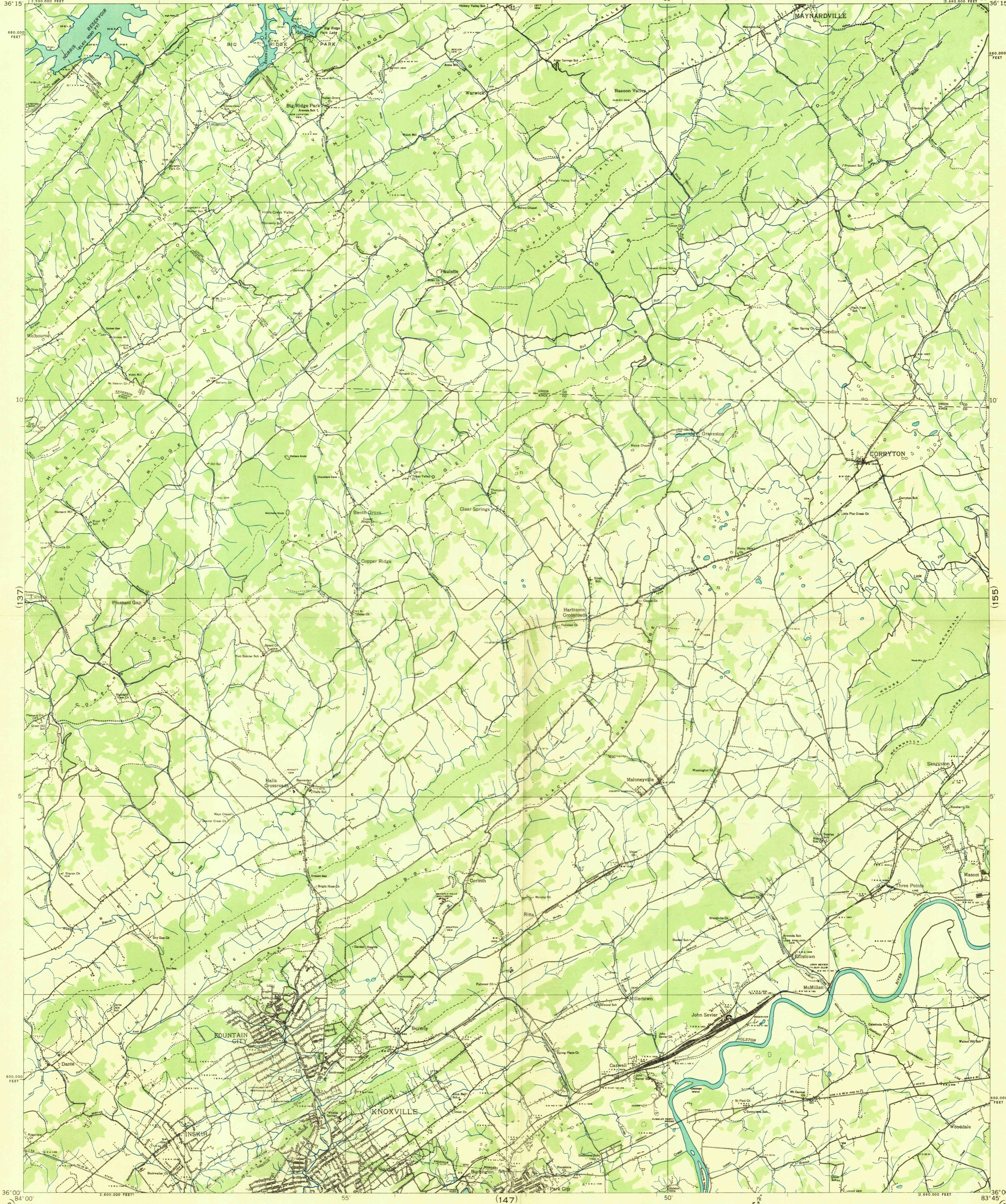
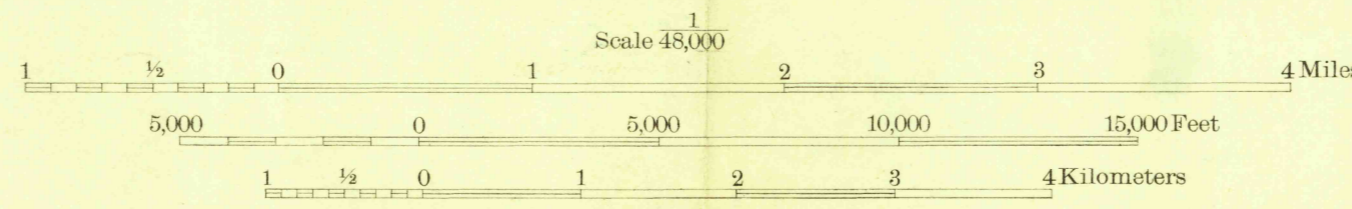


Advance sheet
Subject to correction



Albert Pike, Division Engineer
 Compiled by U. S. Geological Survey from aerial photographs
 Control by U. S. Geological Survey, U. S. Coast and Geodetic Survey,
 Tenn. Em. Rel. Adm.
 Field Examination in 1935 and 1936



Datum is mean sea level

USGS
 HISTORICAL FILE
 TOPOGRAPHIC DIVISION
 APPROXIMATE MEAN
 DECLINATION, 1936

Polyconic projection, 1927 North American Datum
 10,000 foot grid based on Tennessee
 rectangular coordinate system

Ridge line
 Trail
 Sinks
 GORRYTON, TENN.
 146