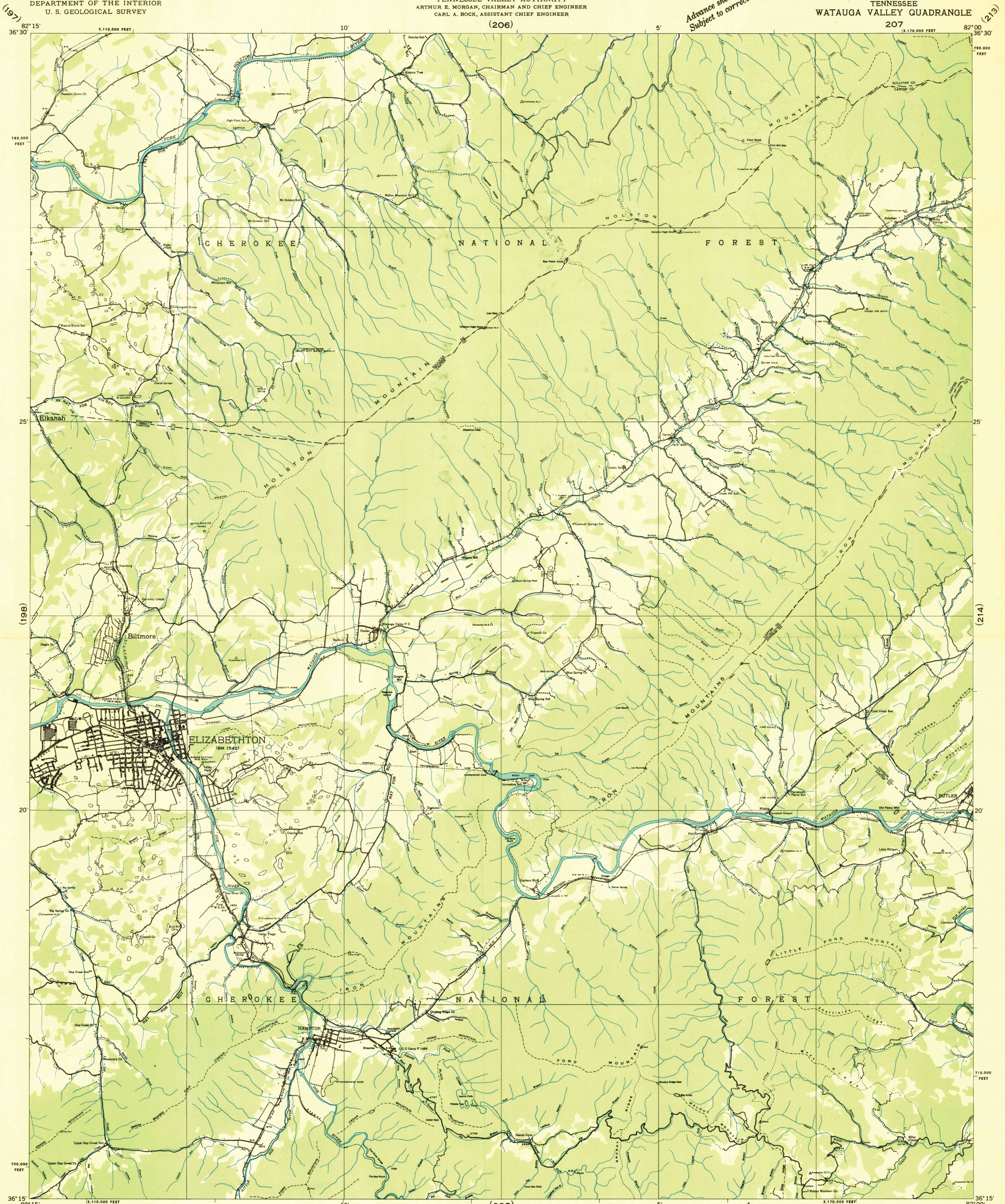
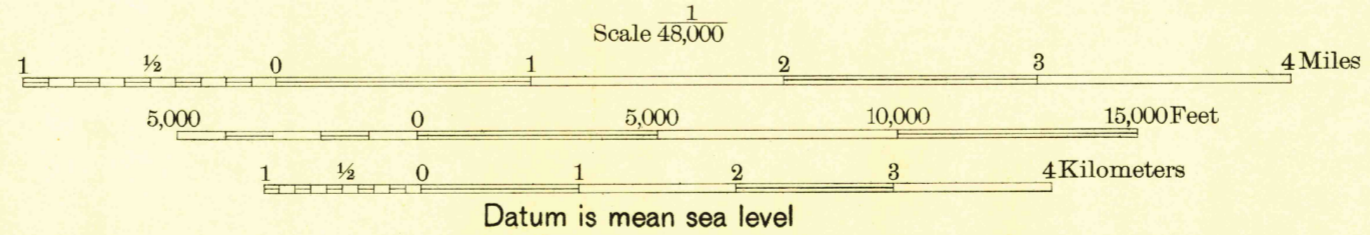


Advance sheet
Subject to correction



Map labels include: (197) 82° 15' 36' 30", 3,110,000 FEET, 10', 5', 780,000 FEET, CHEROKEE NATIONAL FOREST, ELIZABETHTON (BM 1942), BILTMORE, HAMILTON, IRON MOUNTAINS, WATAUGA RIVER, BUTLER, 25', 20', 700,000 FEET, 36° 15' 82° 15', 15,110,000 FEET, (208) 5', 3,170,000 FEET, 710,000 FEET, (215) 36° 15' 82° 00', 15,170,000 FEET, (214), (213).

Albert Pike, Division Engineer
Compiled by U. S. Geological Survey from aerial photographs
Control by U. S. Geological Survey and U. S. Coast and Geodetic Survey
Field examination in 1935



Datum is mean sea level

APPROXIMATE MEAN DECLINATION, 1985

USGS
HISTORICAL FILE
TOPOGRAPHIC DIVISION

Polyconic projection. 1927 North American Datum
10,000 foot grid based on Tennessee
rectangular coordinate system

Ridge line
Trail
Sinks

WATAUGA VALLEY, TENN.
207