

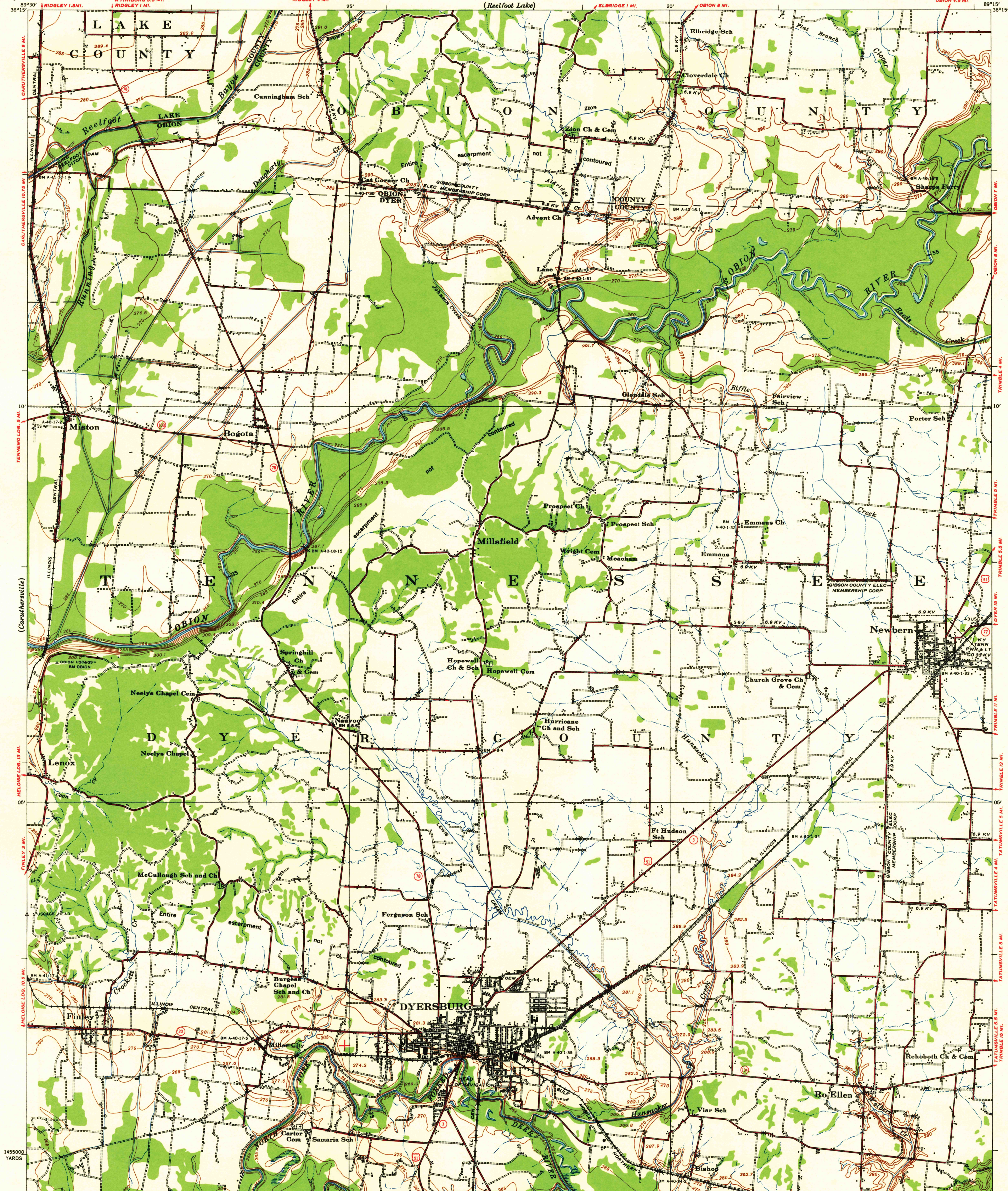
(Portageville)

(Hales Point)

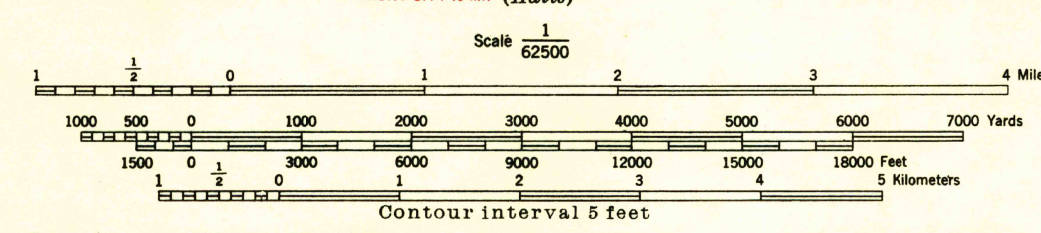
WAR DEPARTMENT
CORPS OF ENGINEERS

U.S.G.S.
FILE COPY
TOPOGRAPHIC DIVISION

TENNESSEE
DYERSBURG QUADRANGLE
GRID ZONE "C"



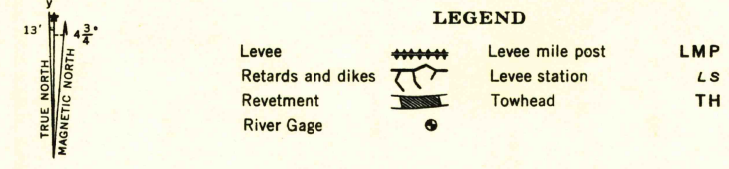
Prepared under the direction of the President, Mississippi River Commission. Horizontal control by Mississippi River Commission and Corps of Engineers, U. S. Army, Memphis District. Vertical control by Mississippi River Commission and Corps of Engineers, U. S. Army, Memphis District. Descriptions, elevations and geodetic positions of bench marks may be obtained from Memphis Engineer District, Memphis, Tenn. Topography by Corps of Engineers, U. S. Army, Memphis District 1931-1939. Area outside Alluvial Valley taken from aerial photographs and is not contoured. Revised by Mississippi River Commission 1933, 1935 and 1939. Political boundaries are shown according to best available information, and are subject to change except where established by court decision. Polyconic Projection, North American Datum.



Datum is mean gulf level at Biloxi, Mississippi. Elevations differ from mean sea level elevations as determined by the U. S. Coast and Geodetic Survey, by small fractions of a foot. Persons interested may secure elevations of bench marks as determined by the latest U. S. C. & G. S. adjustment by applying to the U. S. Coast and Geodetic Survey. FIVE THOUSAND YARD GRID COMPUTED FROM "GRID SYSTEM FOR PROGRESSIVE MAPS IN THE U. S." ZONE C. U. S. C. & G. S. SPECIAL PUBLICATION NO. 89

Additional copies may be procured from The President, Mississippi River Commission, Vicksburg, Miss. 20 cents per copy

PRINTED BY ARMY MAP SERVICE, CORPS OF ENGINEERS, 9-54, 100951



APPROXIMATE MEAN DECLINATION 1935 ANNUAL MAGNETIC CHANGE 2" INCREASE

Distances above mouths of Obion and Forked Deer Rivers are shown at 5 mile intervals.

USGS HISTORICAL FILE TOPOGRAPHIC DIVISION
U.S.G.S. FILE COPY TOPOGRAPHIC DIVISION

DYERSBURG, TENN. EDITION OF 1939 N3600-W8915/15