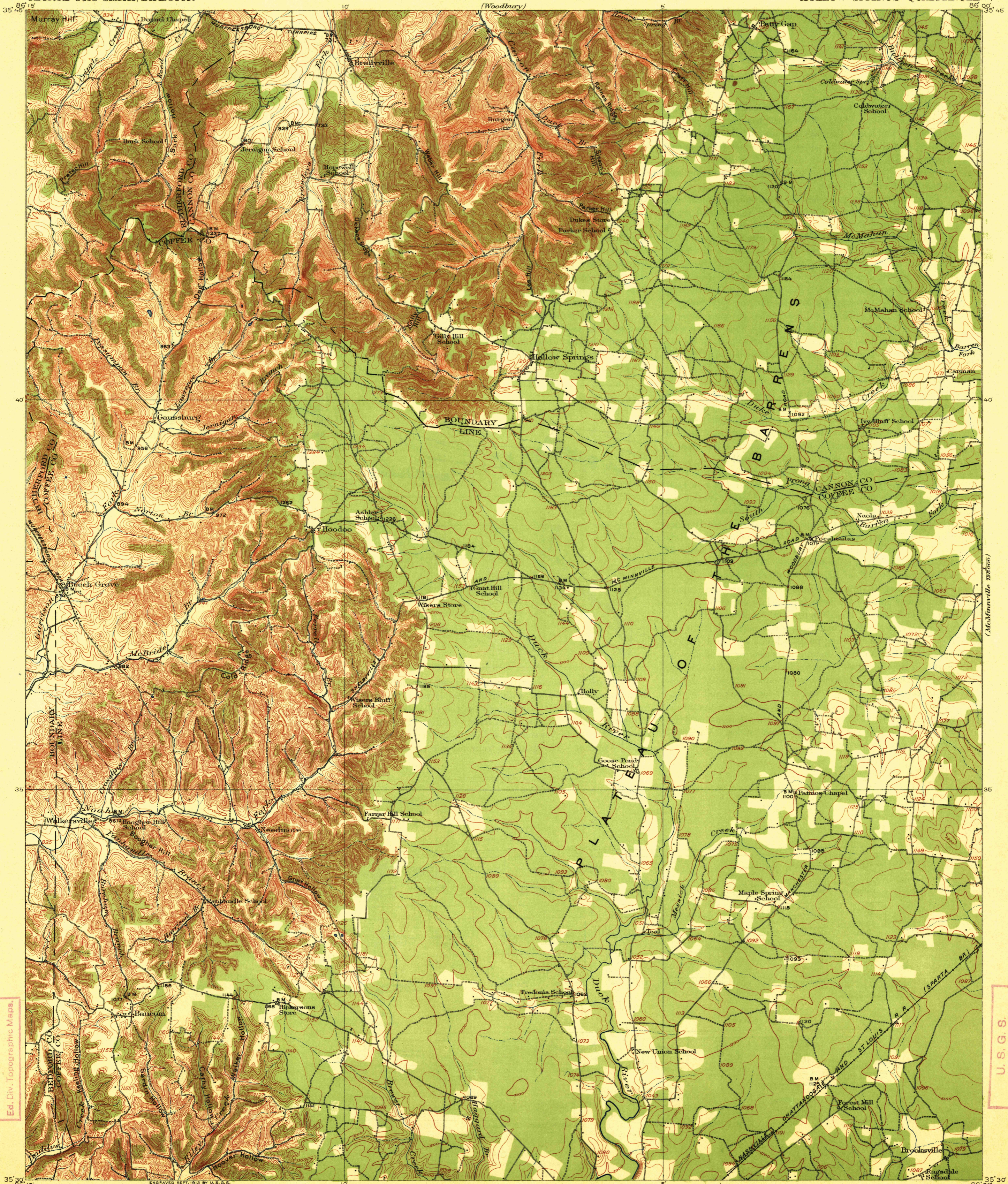
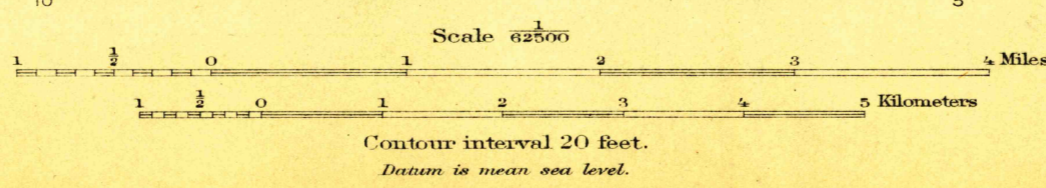


(McMinnville)
255000



35° 15' 86° 15' ENGRAVED SEPT. 1913 BY U.S.G.S.
R.B. Marshall, Chief Geographer.
Frank Sutton, Geographer in charge.
Topography by T.F. Slaughter.
Control by Oscar Jones, C.B. Kendall, and S.E. Taylor.
Surveyed in 1911.



35° 30' 86° 00' Edition of Dec. 1913
USGS FEB 28 1914 3364
HISTORICAL FILE TOPOGRAPHIC DIVISION
HOLLOW SPRINGS, Tenn.
MAGNETIC NORTH
APPROXIMATE MEAN DECLINATION 1911

U.S.G.S.
FILE COPY
Ed. Div. Topographic Maps.

U.S.G.S.
FILE COPY
Ed. Div. Topographic Maps.