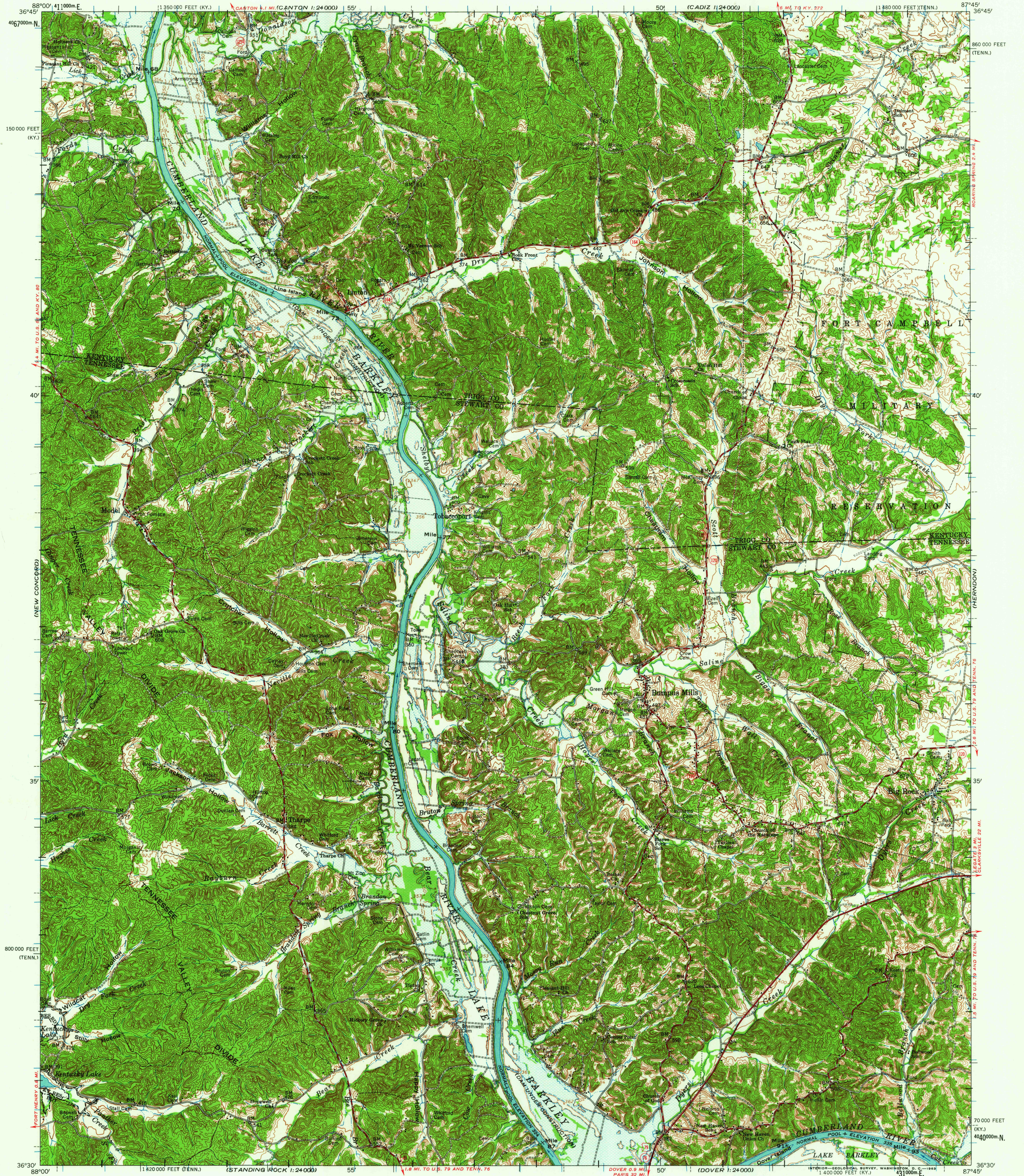


(GOLDEN POND)

UNITED STATES
DEPARTMENT OF THE INTERIOR
GEOLOGICAL SURVEY

MODEL QUADRANGLE
TENNESSEE-KENTUCKY
15 MINUTE SERIES (TOPOGRAPHIC)

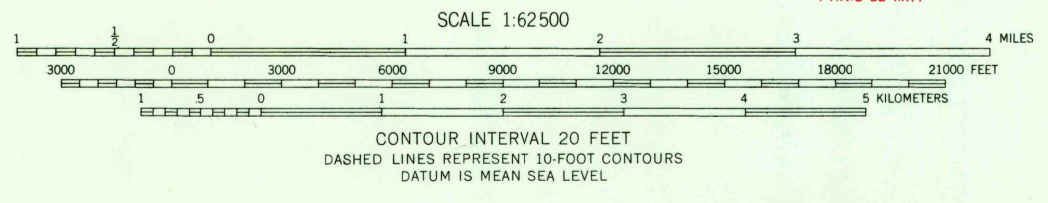
(CALEDONIA)
1:24,000



(PARIS LANDINGS)
1:24,000

Mapped by the Army Map Service
Published for civil use by the Geological Survey
Control by USGS, USCGS, and USCE
Compiled in 1958 by the Army Map Service from
1:25 000-scale maps dated 1957
Topography by photogrammetric methods from aerial photographs
taken 1951. Planimetric detail revised from aerial photographs
taken 1956. Field check 1957
Polyconic projection. 1927 North American datum
10,000-foot grids based on Tennessee coordinate system,
and Kentucky coordinate system, south zone
1000-meter Universal Transverse Mercator grid ticks,
zone 16, shown in blue
Areas covered by dashed light-blue pattern
are subject to controlled inundation to 359 feet
--- 376 --- Indicates Kentucky Lake easement boundary

TRUE NORTH
MAGNETIC NORTH
APPROXIMATE MEAN
DECLINATION, 1957



THIS MAP COMPLIES WITH NATIONAL MAP ACCURACY STANDARDS
FOR SALE BY U.S. GEOLOGICAL SURVEY, WASHINGTON 25, D. C.,
TENNESSEE DIVISION OF GEOLOGY, NASHVILLE, TENNESSEE,
KENTUCKY GEOLOGICAL SURVEY, LEXINGTON, KENTUCKY,
AND KENTUCKY DEPARTMENT OF ECONOMIC DEVELOPMENT, FRANKFORT, KENTUCKY
A FOLDER DESCRIBING TOPOGRAPHIC MAPS AND SYMBOLS IS AVAILABLE ON REQUEST

TENNESSEE
QUADRANGLE LOCATION

ROAD CLASSIFICATION
Heavy-duty ——— Light-duty ———
Medium-duty ——— Unimproved dirt ———
U. S. Route ——— State Route ———

This area also covered by 7.5-minute, 1:24 000-scale
maps: Johnson Hollow 1957, Model 1957, Tharpe 1957,
and Bumpus Mills 1957

MODEL, TENN.-KY.
N 3630-W8745/15
1957

(ERIN)