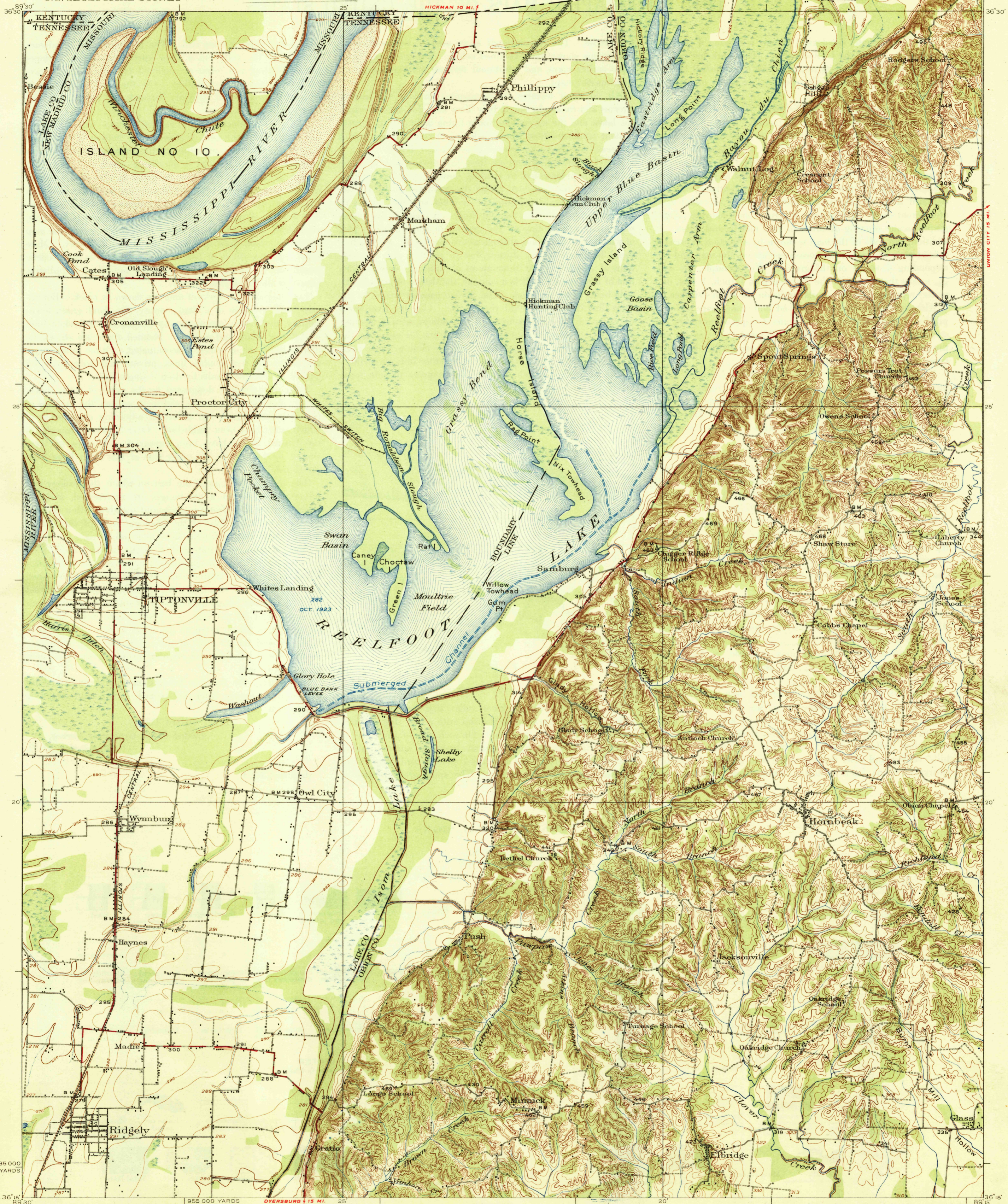


U. S. G. S.  
FILE COPY  
Inspection and Editing

STATE OF TENNESSEE  
WILBUR A. NELSON  
STATE GEOLOGIST

DEPARTMENT OF THE INTERIOR  
U. S. GEOLOGICAL SURVEY



U. S. G. S.  
FILE COPY  
Inspection and Editing

Topography by J. E. Blackburn, C. C. Gardner, and Crawford Dickey.  
Culture and drainage in part from aerial photographs  
from Air Service, U.S. Army.  
Control in part by Mississippi River Commission.  
Surveyed in 1921 and 1923.

Scale 62500  
1 2 3 4 Miles  
5000 10000 15000 30000 Feet  
1 2 3 4 5 Kilometers  
Contour interval 5 feet and 20 feet, changing on the 300 foot contour  
Datum is mean sea level

USGS  
HISTORICAL FILE  
TOPOGRAPHIC DIVISION

Polyconic projection, North American datum  
5000 yard grid based upon U.S. zone system, C

THROUGH ROUTES  
SECONDARY ROUTES  
REELFOOT LAKE, TENN. MO. KY.  
Edition of 1925

3535