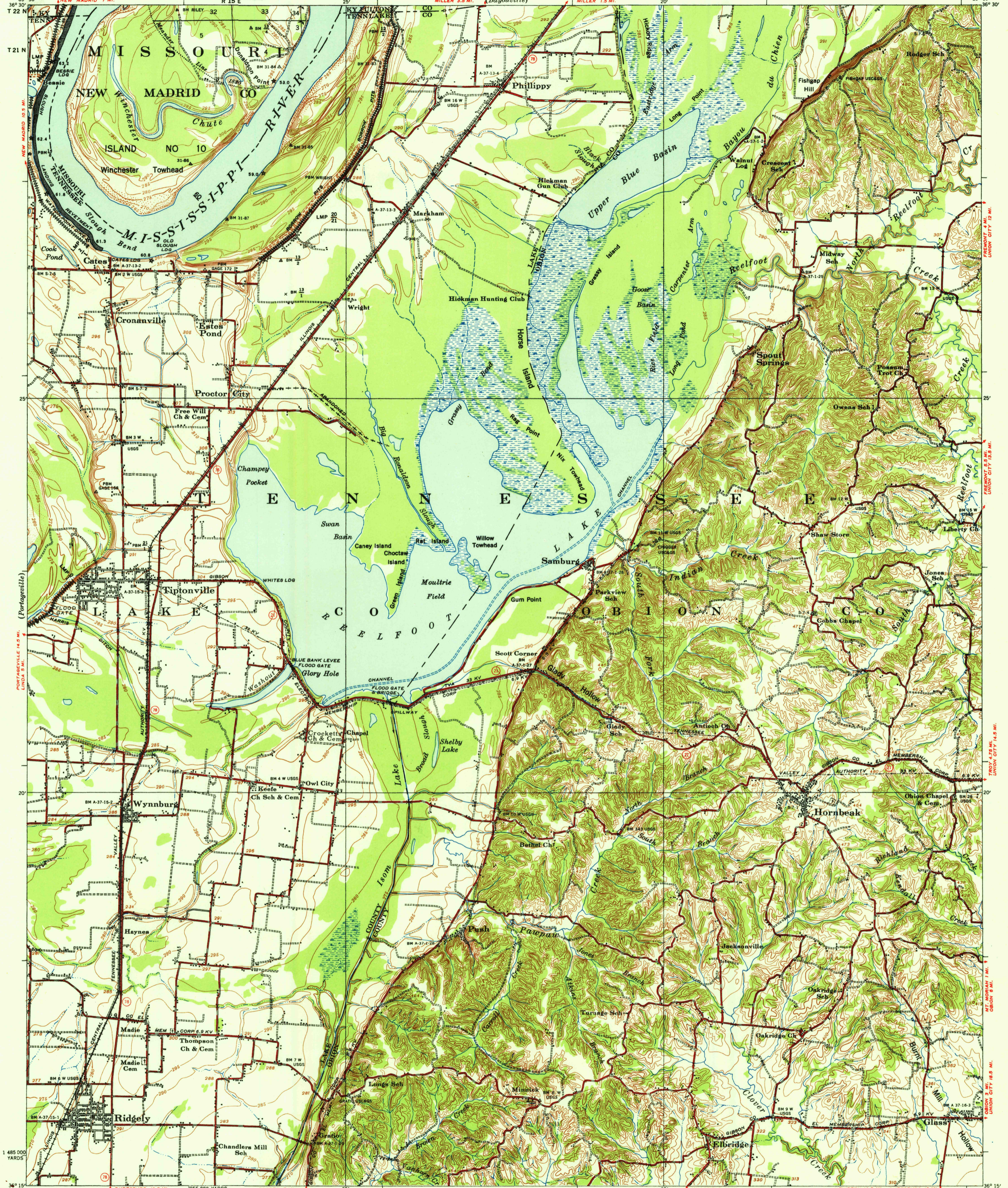


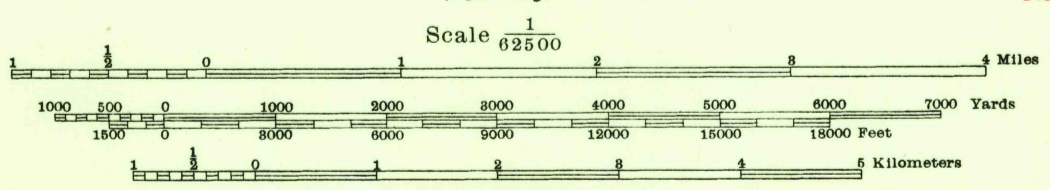
WAR DEPARTMENT
CORPS OF ENGINEERS

U.S.G.S.
FILE COPY
Inspection and Editing.

TENNESSEE - MISSOURI - KENTUCKY
REELFOOT LAKE QUADRANGLE
GRID ZONE "C"



Prepared under the direction of the President, Mississippi River Commission.
Horizontal control by Mississippi River Commission, Corps of Engineers,
U. S. Army, Memphis District, U.S.C. & G.S. and U.S.G.S.
Vertical control by Mississippi River Commission, Corps of Engineers,
U. S. Army, Memphis District and U.S.G.S.
Descriptions, elevations and geodetic positions of bench marks may be
obtained from Memphis Engineer District, Memphis, Tenn.
Topography by Corps of Engineers, U. S. Army, Memphis District and U.S.G.S., 1931-39
Revised by Mississippi River Commission, 1932, 1935 and 1939.
Political boundaries are shown according to best available information
and are subject to change except where established by court decision
Work under Flood Control Act shown as of December, 1939.
Polyconic Projection, North American Datum.



Datum is mean gulf level at Biloxi, Mississippi. Elevations differ from mean sea level elevations as determined
by the U. S. Coast and Geodetic Survey, by small fractions of a foot. Persons interested may secure elevations of bench
marks as determined by the latest U. S. C. & G. S. adjustment, by applying to the U. S. Coast and Geodetic Survey.
FIVE THOUSAND YARD GRID COMPUTED FROM "GRID SYSTEM FOR PROGRESSIVE MAPS
IN THE U. S." ZONE C, U. S. C. & G. S. SPECIAL PUBLICATION NO. 59

REPRINTED FROM MILITARY EDITION FOR CIVIL USE 1950
SOLD AND DISTRIBUTED BY U. S. GEOLOGICAL SURVEY, WASHINGTON 25, D. C.

LEGEND
Levee Levee mile post LMP
Retards and dikes Levee station LS
Revetment Towhead TH
River Gauge

APPROXIMATE MEAN
DECLINATION 1935
ANNUAL MAGNETIC CHANGE 2'
INCREASE
Distances below Cairo gage are shown at 5 mile intervals.

ROUTES USUALLY TRAVELED
HARD IMPERVIOUS SURFACES
OTHER SURFACE IMPROVEMENTS
1939
U. S. ROUTE STATE ROUTE

USGS
HISTORICAL FILE
TOPOGRAPHIC DIVISION

REELFOOT LAKE, TENN.-MO.-KY.
EDITION OF 1939
N3615-W8915/15