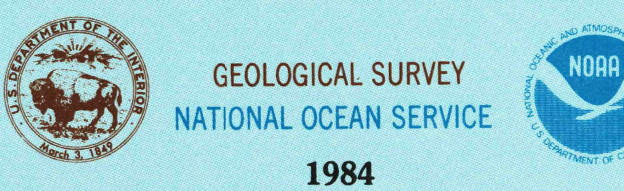


30 X 60 MINUTE QUADRANGLE SHOWING

- Contours and elevations in meters
- Highways, roads and other manmade structures
- Water features
- Woodland areas
- Geographic names
- Bathymetric contours in meters



Produced by the Geological Survey and the National Ocean Service

Compiled from USGS 1:24 000-scale topographic maps dated 1951-1979. Bathymetry revised from soundings appropriate to 1975 and other source data. Revised information not field checked. Map edited 1984.

Bathymetry compiled by the National Ocean Service from tide-coordinated hydrographic surveys. This information is not intended for navigational purposes. Mean lower low water (dotted) line and mean high water (heavy solid) line compiled by NOS from tide-coordinated aerial photographs. Apparent shoreline (outer edge of vegetation) shown by light solid line. Projection used 10 000-meter grid, zone 14 Universal Transverse Mercator 25 000-foot grid ticks based on Texas coordinate system, south zone 1927 North American Datum.

To place on the projected North American Datum 1983 move the projection lines 20 meters south and 27 meters east.

Offshore protection survey data, shown in red, furnished by the Minerals Management Service. Heavy lines indicate boundaries of Outer Continental Shelf Official Protection Diagrams dated July 16, 1984. The protections on this map are not for Federal leasing purposes, for such purposes, refer to OCS Official Protection Diagrams available from the Minerals Management Service.

There may be private landholdings within the boundaries of National or State reservations shown on this map.

CONTOUR INTERVAL 5 METERS

NATIONAL GEODETIC VERTICAL DATUM OF 1929

BATHYMETRIC CONTOUR INTERVAL 2 METERS WITH SUPPLEMENTARY CONTOURS AT 1 METER INTERVALS

THE RELATIONSHIP BETWEEN THE TWO DATUMS IS VARIABLE

BASE MAP COMPLES WITH NATIONAL MAP ACCURACY STANDARDS. BATHYMETRIC SURVEY DATA COMPLES WITH INTERNATIONAL HYDROGRAPHIC ORGANIZATION (IHO) SPECIAL PUBLICATION 48 ACCURACY STANDARDS AND/OR STANDARDS USED AS OF THE DATE OF THE SURVEYS.

CONVERSION TABLE		DECLINATION DIAGRAM		ADJOINING MAPS			
Meters	Feet	Diagram		1	2	3	4
1	3.2808			4	5		
2	6.5615						
3	9.8423						
4	13.1230						
5	16.4037						
6	19.6845						
7	22.9652						
8	26.2460						
9	29.5267						
10	32.8075						

To convert meters to feet multiply by 3.2808
To convert feet to meters multiply by 0.3048

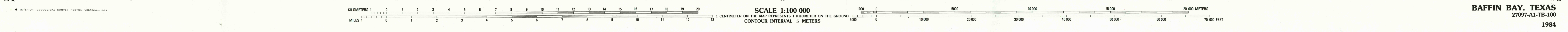
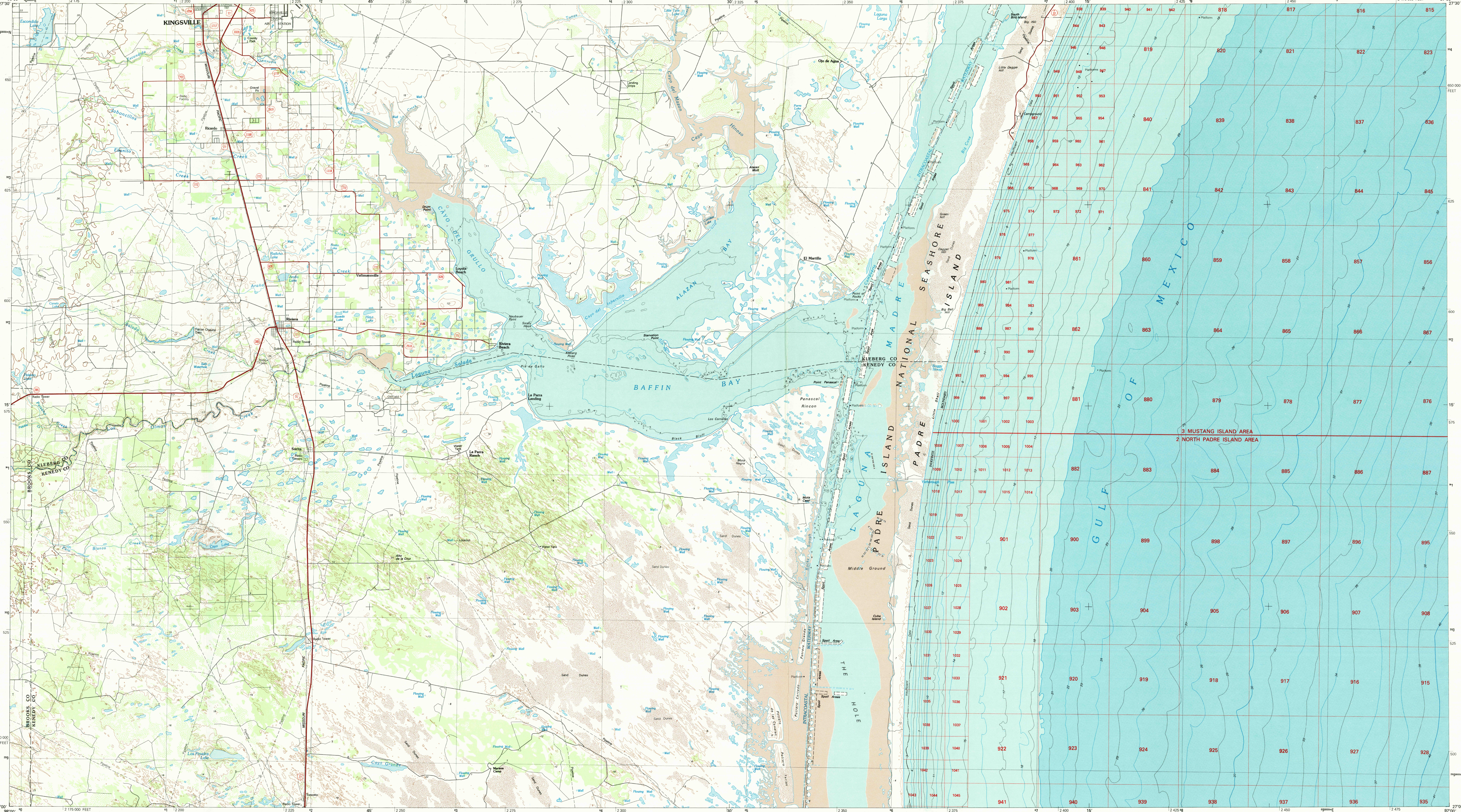
UTM grid convergence (M) at center of map
Magnetic declination (M) at center of map
Diagram is approximate

1. Alice
2. Corpus Christi
3. Alpine Right
4. Falfurrias
5. Brownsville
6. Port Mansfield

FOR SALE BY U.S. GEOLOGICAL SURVEY DENVER, COLORADO 80225, OR RESTON, VIRGINIA 22092 AND NATIONAL OCEAN SERVICE, ROCKVILLE, MARYLAND 20852

Topographic Map Symbols

- Primary highway, hard surface
- Secondary highway, hard surface
- Light duty road, principal street, hard or improved surface
- Other road or street, soil
- Route marker, Interstate, U. S., State
- Railroad, standard gage, narrow gage
- Bridge, viaduct, underpass
- Tunnel, road, railroad
- Built up area, locality, elevation
- Airport, landing field, landing strip
- National boundary
- State boundary
- County boundary
- National or State reservation boundary
- Land grant boundary
- U. S. public lands survey, range, township, section
- Range, township, section line, protected
- Power transmission line, pipeline
- Dam, dam with lock
- Cemetery, building
- Windmill, water well, spring
- Mine shaft, pit or open mine, quarry, gravel pit
- Campground, picnic area, U. S. location monument
- Ruin, cliff dwelling
- Distorted surface, strip mine, low, sand
- Contour, line, intermediate, supplementary
- Bathymetric contours, index, intermediate
- Stream, lake, perennial, intermittent
- Health, trap and snail, fish, large and small
- Area to be submerged, marsh, swamp
- Land subject to controlled inundation, woodland
- Scrub, mangrove
- Other, vineyard



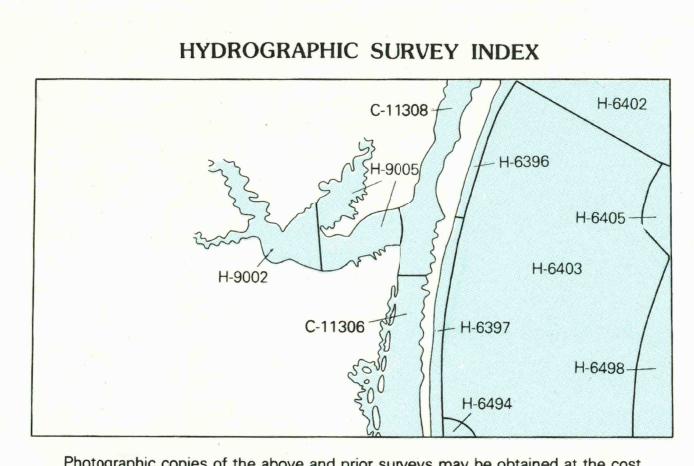
SCALE 1:100 000
1 CENTIMETER ON THE MAP REPRESENTS 1 KILOMETER ON THE GROUND
CONTOUR INTERVAL 5 METERS

BAFFIN BAY, TEXAS
27097-A1-TB-100
1984

HYDROGRAPHIC SURVEY INFORMATION

SURVEY NUMBER	SURVEY DATE	SURVEY SCALE	SURVEY METHOD
H-6396	1938	1:250,000	1:10,000
H-6397	1938	1:250,000	1:10,000
H-6400	1938	1:250,000	1:10,000
H-6401	1938	1:250,000	1:10,000
H-6402	1938	1:250,000	1:10,000
H-6403	1938	1:250,000	1:10,000
H-6404	1938	1:250,000	1:10,000
H-6405	1938	1:250,000	1:10,000
H-6406	1938	1:250,000	1:10,000
H-6407	1938	1:250,000	1:10,000
H-6408	1938	1:250,000	1:10,000
H-6409	1938	1:250,000	1:10,000
H-6410	1938	1:250,000	1:10,000
H-6411	1938	1:250,000	1:10,000
H-6412	1938	1:250,000	1:10,000
H-6413	1938	1:250,000	1:10,000
H-6414	1938	1:250,000	1:10,000
H-6415	1938	1:250,000	1:10,000
H-6416	1938	1:250,000	1:10,000
H-6417	1938	1:250,000	1:10,000
H-6418	1938	1:250,000	1:10,000
H-6419	1938	1:250,000	1:10,000
H-6420	1938	1:250,000	1:10,000
H-6421	1938	1:250,000	1:10,000
H-6422	1938	1:250,000	1:10,000
H-6423	1938	1:250,000	1:10,000
H-6424	1938	1:250,000	1:10,000
H-6425	1938	1:250,000	1:10,000
H-6426	1938	1:250,000	1:10,000
H-6427	1938	1:250,000	1:10,000
H-6428	1938	1:250,000	1:10,000
H-6429	1938	1:250,000	1:10,000
H-6430	1938	1:250,000	1:10,000
H-6431	1938	1:250,000	1:10,000
H-6432	1938	1:250,000	1:10,000
H-6433	1938	1:250,000	1:10,000
H-6434	1938	1:250,000	1:10,000
H-6435	1938	1:250,000	1:10,000
H-6436	1938	1:250,000	1:10,000
H-6437	1938	1:250,000	1:10,000
H-6438	1938	1:250,000	1:10,000
H-6439	1938	1:250,000	1:10,000
H-6440	1938	1:250,000	1:10,000
H-6441	1938	1:250,000	1:10,000
H-6442	1938	1:250,000	1:10,000
H-6443	1938	1:250,000	1:10,000
H-6444	1938	1:250,000	1:10,000
H-6445	1938	1:250,000	1:10,000
H-6446	1938	1:250,000	1:10,000
H-6447	1938	1:250,000	1:10,000
H-6448	1938	1:250,000	1:10,000
H-6449	1938	1:250,000	1:10,000
H-6450	1938	1:250,000	1:10,000
H-6451	1938	1:250,000	1:10,000
H-6452	1938	1:250,000	1:10,000
H-6453	1938	1:250,000	1:10,000
H-6454	1938	1:250,000	1:10,000
H-6455	1938	1:250,000	1:10,000
H-6456	1938	1:250,000	1:10,000
H-6457	1938	1:250,000	1:10,000
H-6458	1938	1:250,000	1:10,000
H-6459	1938	1:250,000	1:10,000
H-6460	1938	1:250,000	1:10,000
H-6461	1938	1:250,000	1:10,000
H-6462	1938	1:250,000	1:10,000
H-6463	1938	1:250,000	1:10,000
H-6464	1938	1:250,000	1:10,000
H-6465	1938	1:250,000	1:10,000
H-6466	1938	1:250,000	1:10,000
H-6467	1938	1:250,000	1:10,000
H-6468	1938	1:250,000	1:10,000
H-6469	1938	1:250,000	1:10,000
H-6470	1938	1:250,000	1:10,000
H-6471	1938	1:250,000	1:10,000
H-6472	1938	1:250,000	1:10,000
H-6473	1938	1:250,000	1:10,000
H-6474	1938	1:250,000	1:10,000
H-6475	1938	1:250,000	1:10,000
H-6476	1938	1:250,000	1:10,000
H-6477	1938	1:250,000	1:10,000
H-6478	1938	1:250,000	1:10,000
H-6479	1938	1:250,000	1:10,000
H-6480	1938	1:250,000	1:10,000
H-6481	1938	1:250,000	1:10,000
H-6482	1938	1:250,000	1:10,000
H-6483	1938	1:250,000	1:10,000
H-6484	1938	1:250,000	1:10,000
H-6485	1938	1:250,000	1:10,000
H-6486	1938	1:250,000	1:10,000
H-6487	1938	1:250,000	1:10,000
H-6488	1938	1:250,000	1:10,000
H-6489	1938	1:250,000	1:10,000
H-6490	1938	1:250,000	1:10,000
H-6491	1938	1:250,000	1:10,000
H-6492	1938	1:250,000	1:10,000
H-6493	1938	1:250,000	1:10,000
H-6494	1938	1:250,000	1:10,000
H-6495	1938	1:250,000	1:10,000
H-6496	1938	1:250,000	1:10,000
H-6497	1938	1:250,000	1:10,000
H-6498	1938	1:250,000	1:10,000
H-6499	1938	1:250,000	1:10,000
H-6500	1938	1:250,000	1:10,000

NOS CHART 11306 MAY 1980 1:40,000
NOS CHART 11308 JULY 1980 1:40,000



Photographic copies of the above and prior surveys may be obtained at the cost of reproduction by addressing the Director, NCCD, National Ocean Service, National Oceanic and Atmospheric Administration, Rockville, Maryland 20852