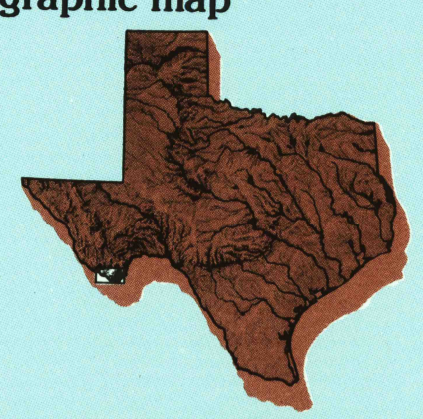



Chisos Mountains
TEXAS-CHIHUAHUA-COAHUILA
1:100 000-scale metric
topographic map

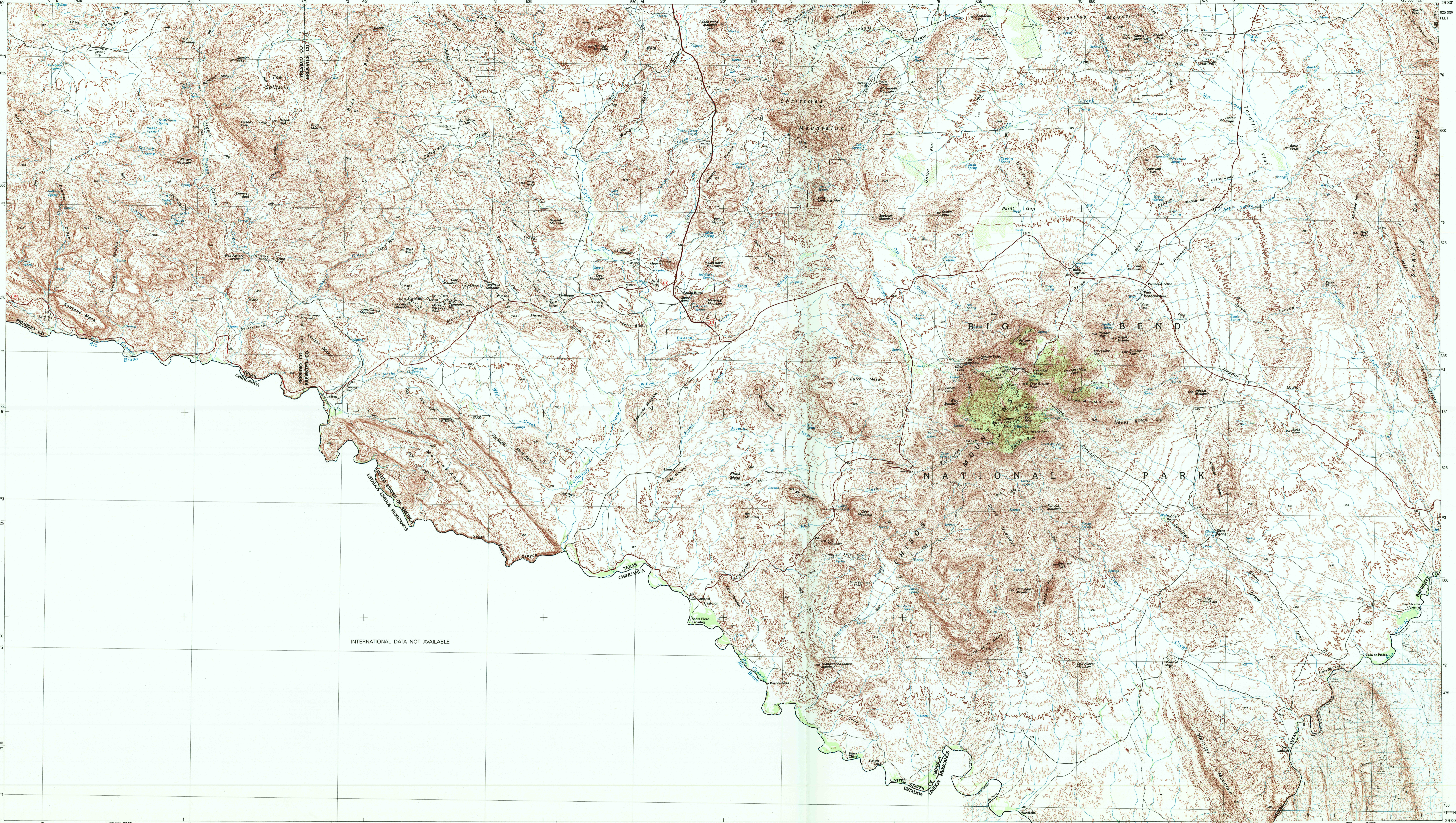


30 X 60 MINUTE QUADRANGLE
SHOWING

- Contours and elevations in meters
- Highways, roads and other manmade structures
- Water features
- Woodland areas
- Geographic names



GEOLOGICAL SURVEY
1985



Produced by the United States Geological Survey
U.S. portion compiled from USGS 1:24 000-scale topographic maps dated 1970-1971. Preliminary revised from aerial photographs taken 1980 and other source data. Revised information not field checked.
Mexico portion derived from DGG 1:50,000-scale topographic map dated 1983, San Vicens 413346.
Map edited 1985

1927 North American Datum (NAD 27). Projection and 10 000-meter grid: Universal Transverse Mercator, zone 13 25 000-foot ticks: Texas coordinate system, south central zone
The difference between NAD 27 and North American Datum of 1983 (NAD 83) is too small to show at this scale. The values of the shift between the datums for 7.5-minute intersections are given in USGS Bulletin 1875. Mexico portion is NAD 27
There may be private inholdings within the boundaries of the National or State reservations in the U.S. portion shown on this map

CONTOUR INTERVAL 20 METERS IN THE UNITED STATES NATIONAL GEODETIC VERTICAL DATUM OF 1929
RELATIONS SHOWN TO NEAREST METER
CONTOUR INTERVAL 20 METERS IN MEXICO DATUM IS MEAN SEA LEVEL

FOR SALE BY U.S. GEOLOGICAL SURVEY, DENVER, COLORADO 80225 AND BY SERVICIO A USARIOS, INEGI, DIRECCION DE INTERACCION Y ANALISIS, SUBDIRECCION DE COMERCIALIZACION, HERODE DE NACAZARI 2301 PUERTA 11, COL. DEL PARQUE C.P. 90000, AGRASALIENTES, AGS, MEXICO

Meters	Feet	+	Meters	+	Feet
1	3.2808		1	1	3
2	6.5617		2	2	6
3	9.8425		3	3	9
4	13.1234		4	4	12
5	16.4042		5	5	15
6	19.6850		6	6	18
7	22.9659		7	7	21
8	26.2467		8	8	24
9	29.5275		9	9	27
10	32.8084		10	10	30

1 Precipito
2 Sawtooth Mountains
3 Over Mountain
4 Roadbed
5 Duvallites
6
7
8

ISBN 0-607-53932-1
9 780607 539325

RECEIVED
FEB 28 2001

USGS/USGS
HISTORICAL MAP ARCHIVES

Topographic Map Symbols

Primary highway, hard surface	—
Secondary highway, hard surface	—
Light duty road, principal street, hard or improved surface	—
Other road or street, trail	—
Railroad: standard gauge, narrow gauge	—
Bridge: overpass; underpass	—
Tunnel: road; railroad	—
Built up area; locality; elevation	—
Airport; landing field; landing strip	—
National boundary	—
State boundary	—
County boundary	—
National or State reservation boundary	—
Land grant boundary	—
U.S. public lands survey: range, township, section	—
Range, township, section line: protracted	—
Power transmission line; pipeline	—
Dam; dam with lock	—
Cemetery; building	—
Windmill; water well; spring	—
Mine shaft; adit or cave; mine, quarry; gravel pit	—
Campground; picnic area; U.S. location monument	—
Run; cliff dwelling	—
Disturbed surface: strip mine, lava, sand	—
Contours: index; intermediate; supplementary	—
Bathymetric contours: index; intermediate	—
Stream, lake; perennial; intermittent	—
Reefs; large and small; shoals, large and small	—
Area to be submerged; marsh, swamp	—
Land subject to controlled inundation; woodland	—
Soak; mangrove	—
Orchard; vineyard	—