

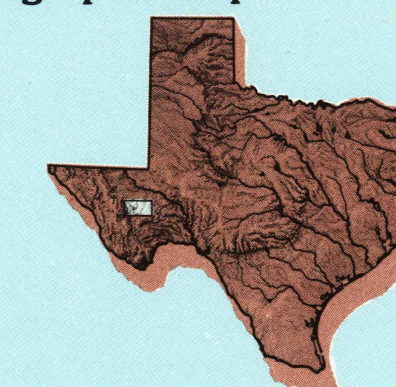
FORT DAVIS, TEXAS

30X60 MINUTE SERIES (TOPOGRAPHIC)



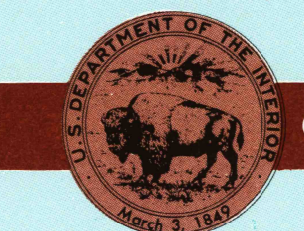
Fort Davis TEXAS

1:100 000-scale metric topographic map



30 X 60 MINUTE QUADRANGLE SHOWING

- Contours and elevations in meters
- Highways, roads and other manmade structures
- Water features
- Woodland features
- Geographic names



GEOLOGICAL SURVEY

1985

Produced by the United States Geological Survey. Compiled from USGS 1:24 000-scale topographic maps dated 1970-1980. Flanometry revised from aerial photographs taken 1980 and other source data. Revised information not field checked. Map edited 1985.

North American Datum of 1927 (NAD 27) Projection and 10 000-meter grid: Universal Transverse Mercator, zone 13 25 000-foot ticks: Texas coordinate system, central and south central zones.

The values of the shift between NAD 27 and North American Datum of 1983 (NAD 83) for 7.5-minute intersections are obtainable from National Geodetic Survey NADCON software. There may be private inholdings within the boundaries of the National or State reservations shown on this map.

CONTOUR INTERVAL: 20 METERS NATIONAL GEODETIC VERTICAL DATUM OF 1929 ELEVATIONS SHOWN TO THE NEAREST METER

THIS MAP COMPLIES WITH NATIONAL MAP ACCURACY STANDARDS

FOR SALE BY U.S. GEOLOGICAL SURVEY, P.O. BOX 25286, DENVER, COLORADO, 80225

CONVERSION TABLE		DECLINATION DIAGRAM		ADJOINING MAPS		
Meters	Feet	Magnetic Declination		1	2	3
1	3.2808	14 MILS		4	5	
2	6.5617	14 MILS		6	7	8
3	9.8425	14 MILS				
4	13.1234	14 MILS				
5	16.4043	14 MILS				
6	19.6852	14 MILS				
7	22.9661	14 MILS				
8	26.2470	14 MILS				
9	29.5279	14 MILS				
10	32.8088	14 MILS				

To convert meters to feet multiply by 3.2808
To convert feet to meters multiply by 0.3048

UTM grid convergence (GM) and true magnetic declination (MD) at center of map. Diagram is approximate.

1	Van Horn
2	Crane
3	Mount Livermore
4	Fort Stockton
5	Maria
6	Alpine
7	Sanderson

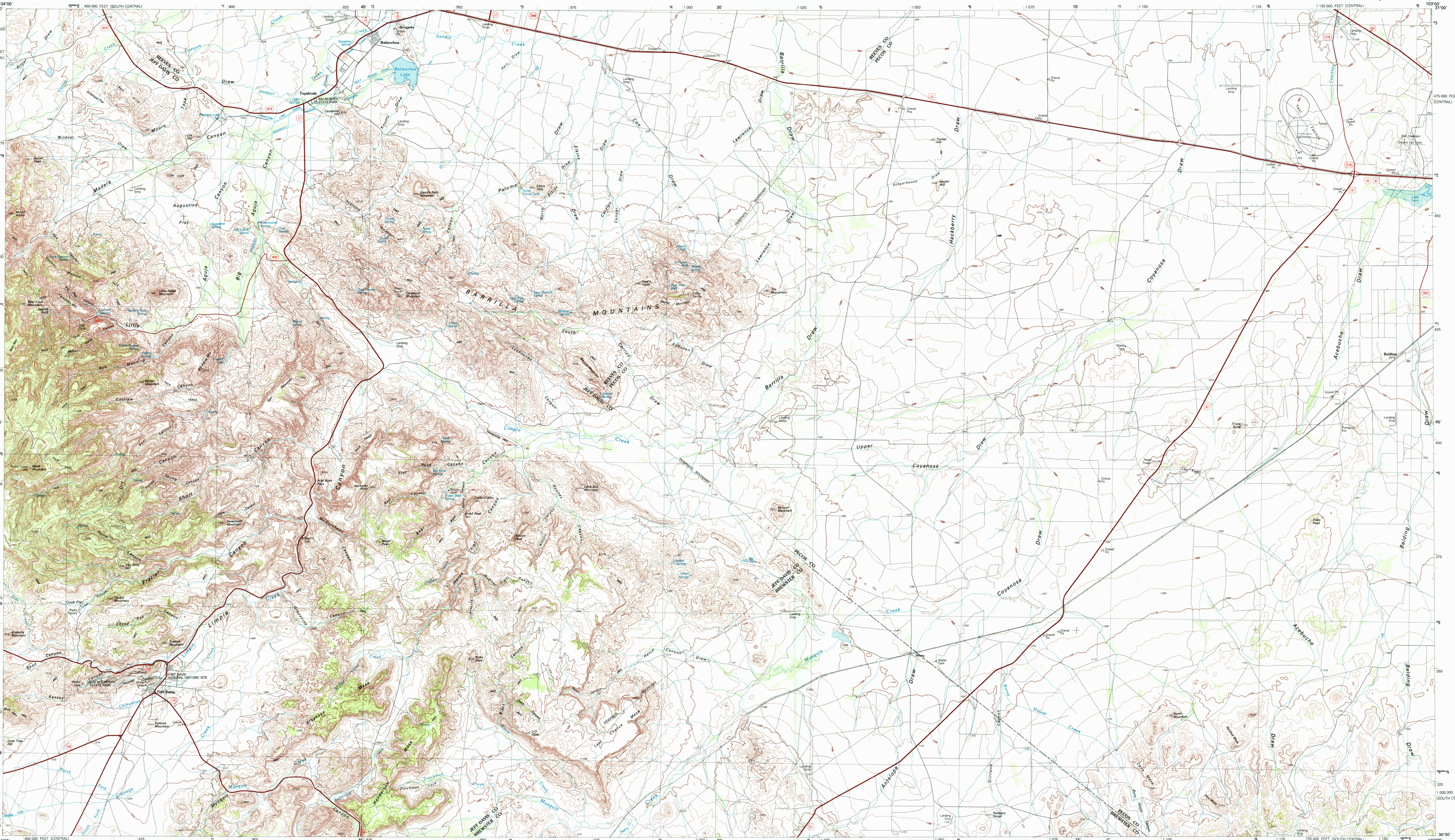


RECEIVED MAR 31 2001

USGS NWHD HISTORICAL MAP ARCHIVES

Topographic Map Symbols

Primary highway, hard surface	
Secondary highway, hard surface	
Light duty road, principal street, hard or improved surface	
Other road or street, not hard or improved surface	
Road marker: Interstate, U.S., State	
Railroad: standard gauge, narrow gauge	
Bridge: overpass, underpass	
Tunnel: road, railroad	
Build-up area: locality, elevation	
Airport: landing field, landing strip	
National boundary	
State boundary	
County boundary	
National or State reservation boundary	
Land grant boundary	
U.S. public lands survey: range, township, section	
Range, township, section line: protracted	
Power transmission line: pipeline	
Dam, dam with lock	
Cemetery, building	
Windmill, water well, spring	
Mine shaft, pit or cave, mine, quarry, gravel pit	
Campground, picnic area, U.S. location monument	
Road: dirt, gravel	
Distorted surface: strip mine, levee, sand	
Contours: index, intermediate, supplementary	
Bathymetric contours: index, intermediate	
Stream: lake, reservoir, intermittent	
Rapids, large and small, falls, large and small	
Area to be submerged; marsh, swamp	
Land subject to controlled inundation; woodland	
Sorb; mangrove	
Orchard; vineyard	



SCALE 1:100 000 1 CENTIMETER ON THE MAP REPRESENTS 1 KILOMETER ON THE GROUND

FORT DAVIS, TEXAS 30103-EI-TM-100 1985

A pamphlet describing topographic maps is available on request. USGS logo and 'PRINTED ON RECYCLED PAPER' text.