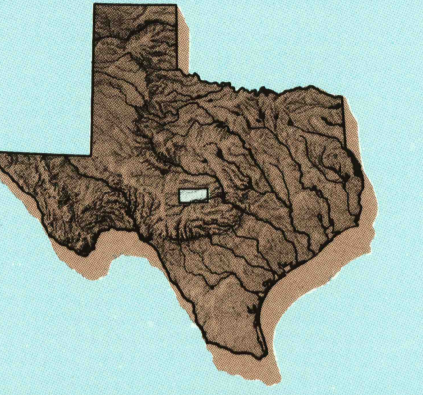


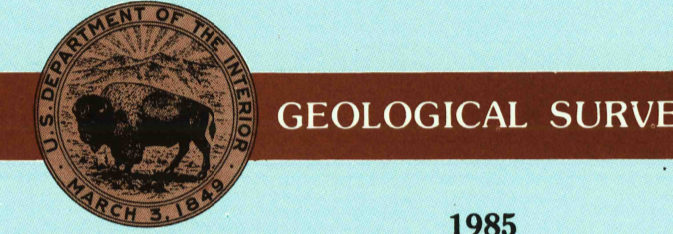
# Mason TEXAS

1:100 000-scale planimetric map



30 X 60 MINUTE QUADRANGLE SHOWING

- Elevations in meters
- Highways, roads and other manmade structures
- Water features
- Woodland areas
- Geographic names



Produced by the United States Geological Survey  
 Compiled from USGS 1:24 000-scale topographic maps dated 1962-1982. Planimetry revised from aerial photographs taken 1983 and other source data. Revised information not field checked. Map edited 1985.  
 Projection and 10 000-meter grid, zone 14 Universal Transverse Mercator  
 25 000-foot grid ticks based on Texas coordinate system, central zone, 1927 North American Datum  
 To place on the projected North American Datum, 1983 move the projection lines 15 meters south and 32 meters east

NATIONAL GEODETIC VERTICAL DATUM OF 1929  
 ELEVATIONS SHOWN TO THE NEAREST METER

THIS MAP COMPLIES WITH NATIONAL MAP ACCURACY STANDARDS

CONVERSION TABLE		DECLINATION DIAGRAM		ADJOINING MAPS		
Meters	Feet	True	Magnetic	1	2	3
1	3.2808	0° 15'	132 MILS	1	2	3
2	6.5616	0° 15'	132 MILS	4	5	6
3	9.8424	0° 15'	132 MILS	7	8	9
4	13.1232	0° 15'	132 MILS	10	11	12
5	16.4040	0° 15'	132 MILS	13	14	15
6	19.6848	0° 15'	132 MILS	16	17	18
7	22.9656	0° 15'	132 MILS	19	20	21
8	26.2464	0° 15'	132 MILS	22	23	24
9	29.5272	0° 15'	132 MILS	25	26	27
10	32.8080	0° 15'	132 MILS	28	29	29

To convert meters to feet multiply by 3.2808  
 To convert feet to meters multiply by 0.3048

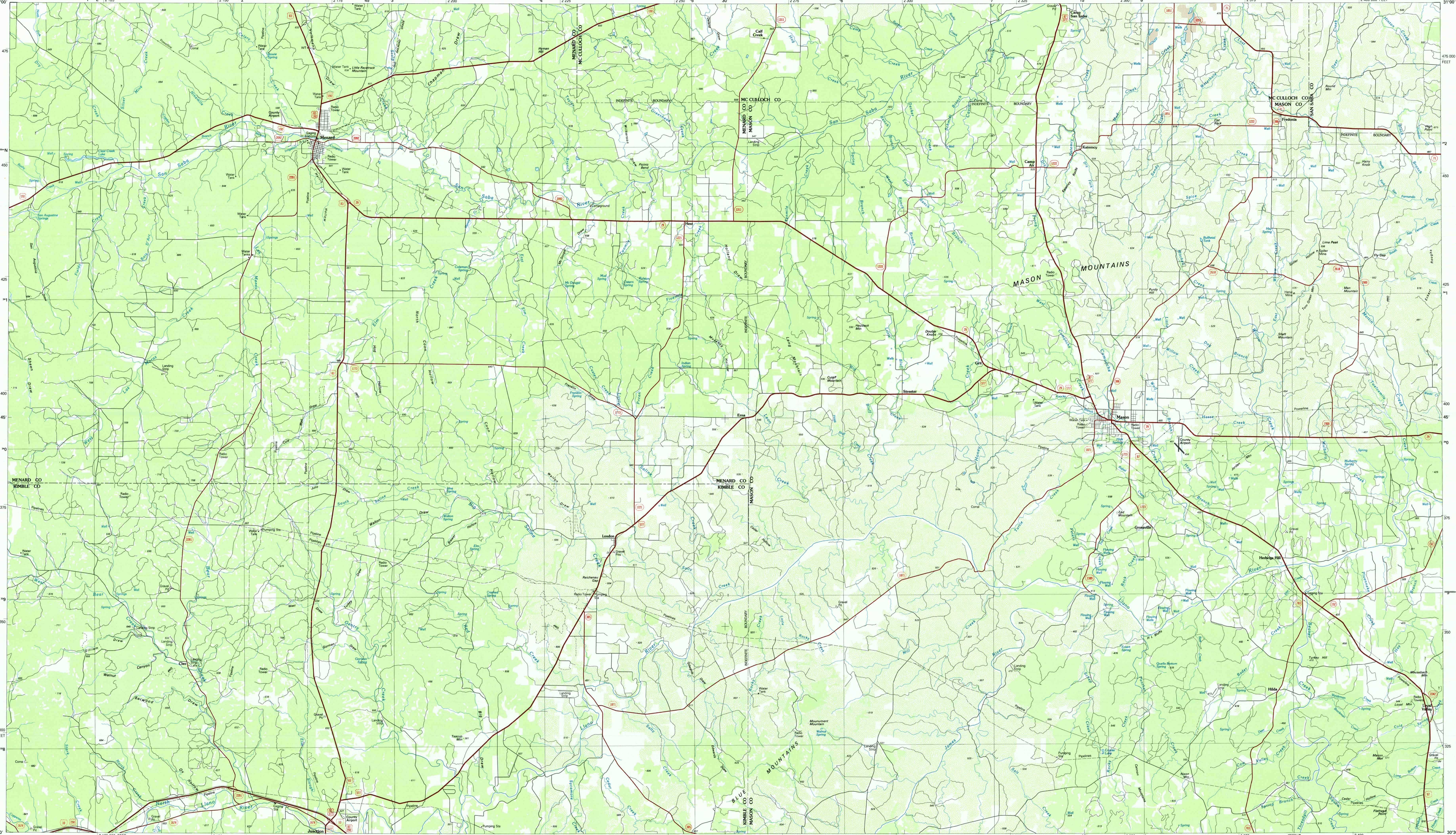
UTM grid convergence (GM) and 1983 magnetic declination (MD) at center of map. Diagram is approximate.

1 San Angelo  
 2 Brady  
 3 Slaton  
 4 Sonora  
 5 Llano  
 6 Rockspings  
 7 Berville  
 8 Pedernales River

FOR SALE BY U. S. GEOLOGICAL SURVEY, DENVER, COLORADO 80225  
 OR RESTON, VIRGINIA 22092

## Topographic Map Symbols

- Primary highway, hard surface
- Secondary highway, hard surface
- Light duty road, principal street, hard or improved surface
- Other road or street, trail
- Road marker: Interstate, U. S. State
- Railroad: standard gage, narrow gage
- Bridge; overpass; underpass
- Tunnel: road; railroad
- Built up area: locality, elevation
- Airport: landing field, landing strip
- National boundary
- State boundary
- County boundary
- National or State reservation boundary
- Land grant boundary
- U. S. public lands survey: range, township; section
- Range, township; section line: protected
- Power transmission line: pipeline
- Dam; dam with lock
- Canal; building
- Windmill; water well; spring
- Mine shaft; adit or cave; mine, quarry; gravel pit
- Campground; picnic area; U. S. location monument
- Ruin; cliff dwelling
- Contour: surface; strip mine, levee; sand
- Contours: index, intermediate, supplementary
- Bathymetric contours: index, intermediate
- Stream, lake: perennial, intermittent
- Reefs, bays and small; falls, large and small
- Area to be submerged; marsh, swampland
- Land subject to controlled inundation; woodland
- Swab; mangrove
- Order; vineyard



MASON, TEXAS  
 30099-E1-PL-100