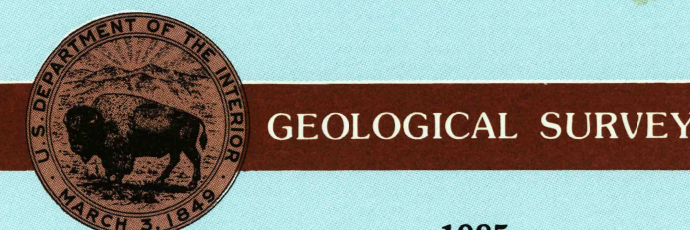


- Elevations in meters
- Highways, roads and other manmade structures
- Water features
- Woodland areas
- Geographic names



Produced by the United States Geological Survey

Compiled from USGS 1:24 000-scale topographic maps dated 1966-1984. Planimetry revised from aerial photographs taken 1980-1983 and other source data. Revised information not field checked. Map edited 1985.

Projection and 10 000-meter grid, zone 15 Universal Transverse Mercator
 25 000-foot grid ticks based on Texas coordinate system, north central and central zones
 1927 North American Datum
 To place on the predicted North American Datum 1983 move the projection lines 12 meters south and 22 meters east.
 There may be private inholdings within the boundaries of the National or state reservations shown on this map.

NATIONAL GEODETIC VERTICAL DATUM OF 1929 ELEVATIONS SHOWN TO THE NEAREST METER

THIS MAP COMPLIES WITH NATIONAL MAP ACCURACY STANDARDS

CONVERSION TABLE		DECLINATION DIAGRAM		ADJOINING MAPS		
Meters	Feet	GN	M	1	2	3
1	3.2808		M	1	2	3
2	6.5616			4	5	6
3	9.8424			7	8	
4	13.1232					
5	16.4040					
6	19.6848					
7	22.9656					
8	26.2464					
9	29.5272					
10	32.8080					

To convert meters to feet multiply by 3.2808
 To convert feet to meters multiply by 0.3048

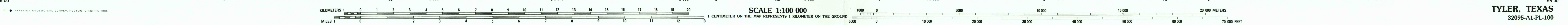
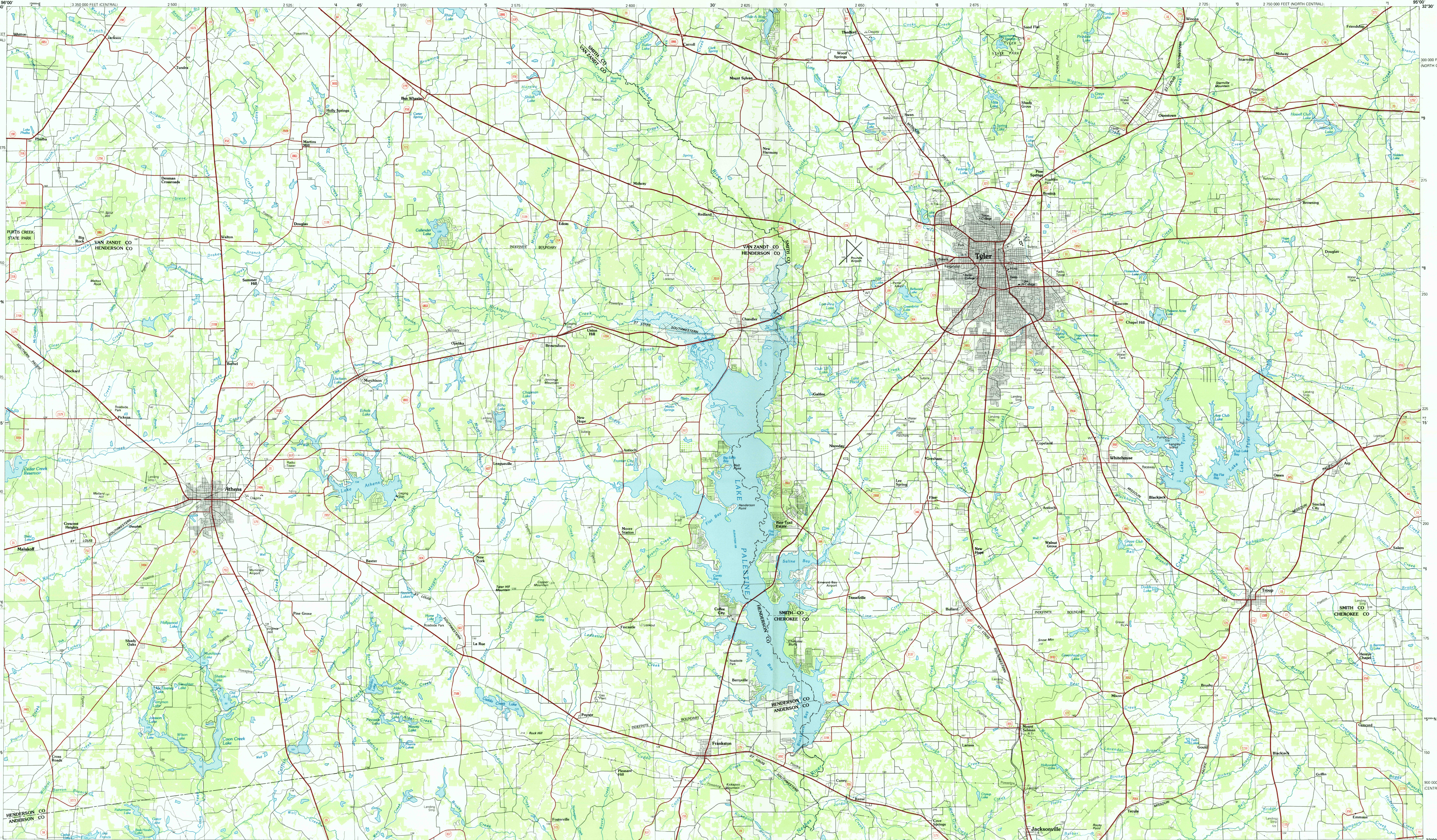
UTM grid convergence (GN) and 1983 magnetic declination (M) at center of map. Diagram is approximate.

ADJOINING MAPS	1	2	3
1 Dallas	2 Mineola	3 Marshall	
4 Corsicana	5 Waco	6 Meville	
7 Palestine	8 Nacogoches		

FOR SALE BY U. S. GEOLOGICAL SURVEY, DENVER, COLORADO 80225 OR RESTON, VIRGINIA 22092

Topographic Map Symbols

- Primary highway, hard surface
- Secondary highway, hard surface
- Light duty road, principal street, hard or improved surface
- Other road or street, trail
- Road marker: Interstate, U. S. State
- Narrowest section: narrow gage
- Bridge: overpass; underpass
- Tunnel: road, railroad
- Built up area; locality; elevation
- Airport; landing field; landing strip
- National boundary
- State boundary
- County boundary
- National or State reservation boundary
- U. S. public lands survey: range, township, section
- Range, township; section line: protected
- Power transmission line: pipeline
- Dam; dam with lock
- Cemetery; building
- Windmill; water well; spring
- Mine shaft; adit or cave; mine, quarry; gravel pit
- Campground; picnic area; U. S. location monument
- Ruins; diff. dwelling
- Distorted surface: strip mine; low; sand
- Contours: index; intermediate; supplementary
- Bathymetric contours: index; intermediate
- Stream, lake: perennial; intermittent
- Rapids, large and small; falls, large and small
- Area to be submerged; marsh; swampland
- Land subject to controlled inundation; woodland
- Struck; mangrove
- Channel; channel



TYLER, TEXAS 32095-A1-PL-100

1985

