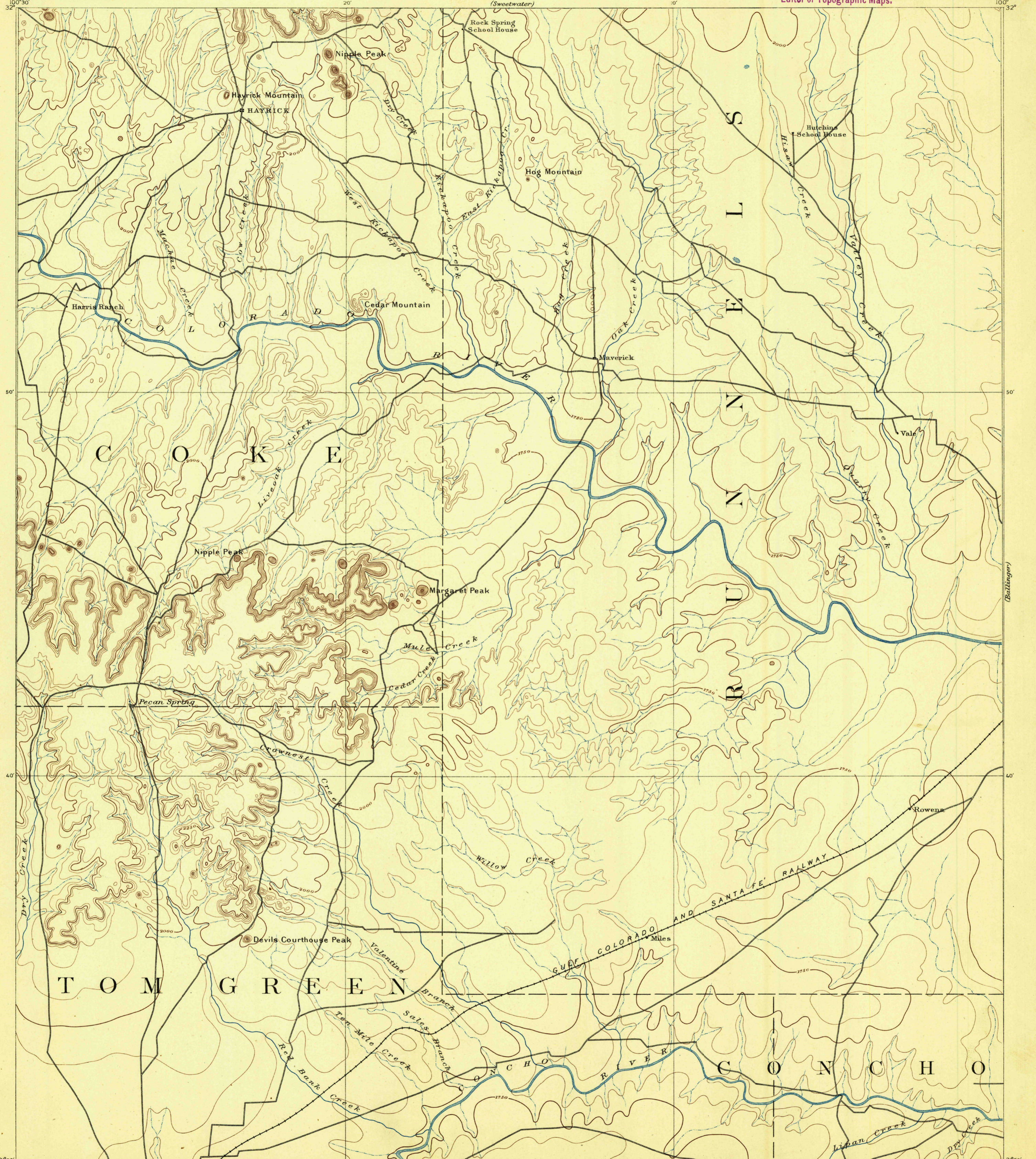


(Abilene)



A.H. Thompson, Geographer.  
R.U. Goode, Geographer in charge.  
Triangulation by C.F. Urquhart.  
Topography by H.S. Wallace.  
Surveyed in 1890.

U. S. G. S.  
**FILE COPY**  
Ed. Div. Topographic Maps.

(San Angelo)  
Scale 1:25,000  
Contour Interval 50 feet

USGS  
Historical File  
Topographic Division

Edition of July 1894.

600  
aug 94

HAYRICK, TEX.

(Ballinger)

(Eden)