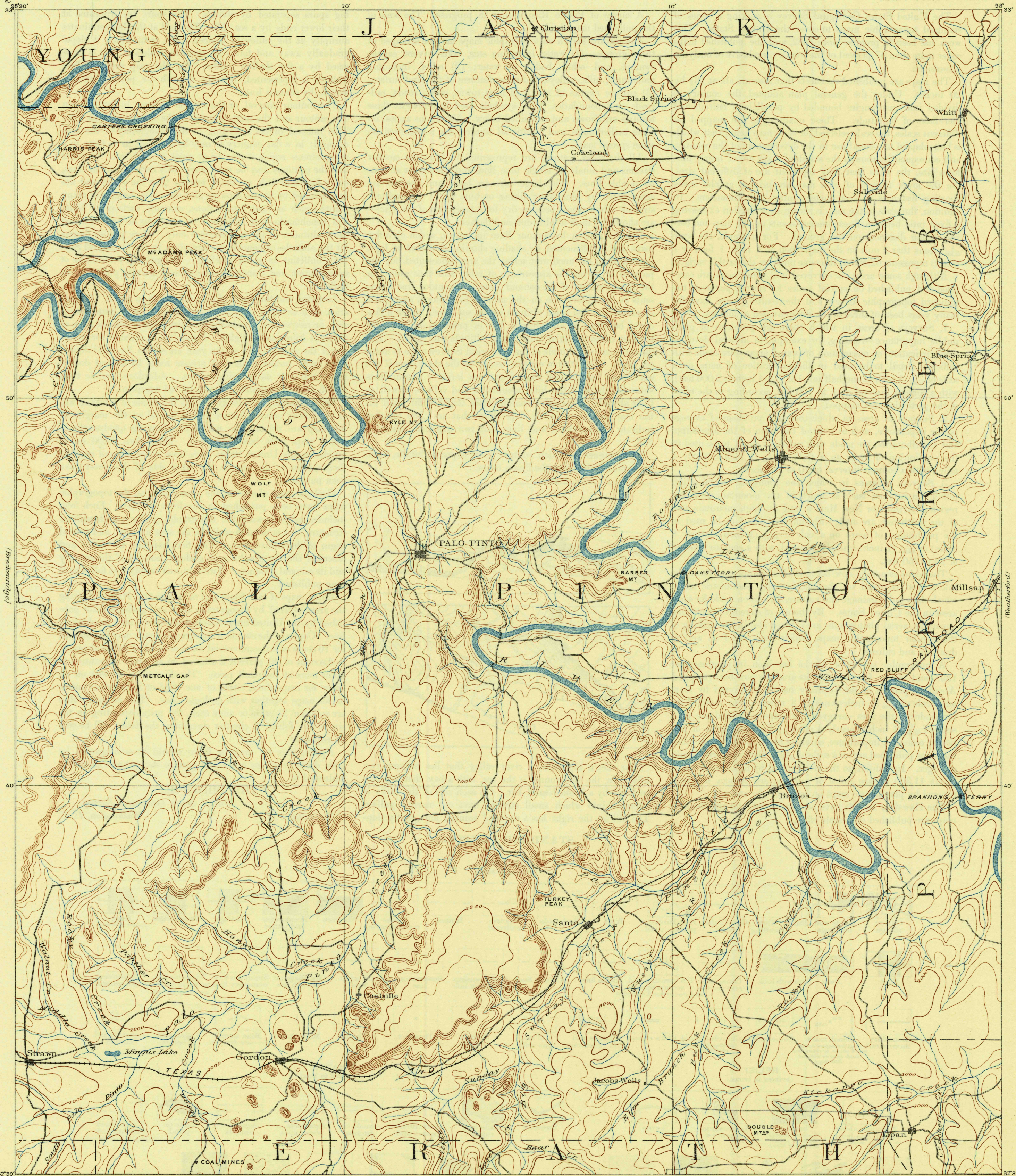


(60 ft. interval)
5000

UNITED STATES
DEPARTMENT OF THE INTERIOR
GEOLOGICAL SURVEY

U. S. G. S.
FILE COPY
Transmission and Editing.

TEXAS
PALO PINTO SHEET



(Elevation)
5000

Henry Gannett, Chief Topographer.
R. U. Goode, Geographer in charge.
Triangulation by R. U. Goode.
Topography by H. S. Wallace.
Surveyed in 1889.

Scale 1:25,000
0 1 2 3 4 5 6 Miles
Contour Interval 50 feet

Surveyed by reconnaissance methods

Polyconic projection
Edition of Nov. 1891, reprinted 1944

TEXAS
PALO PINTO
N3230-W9800/30

U. S. G. S.
FILE COPY
Transmission and Editing.

MAR 27 1944

2150