

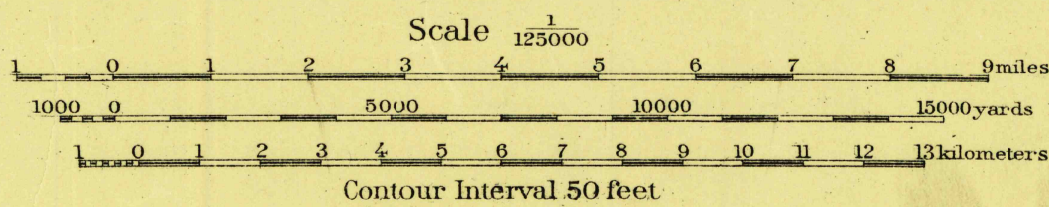
CONTROLLED RECONNAISSANCE SHEET
464 N II & IV

TEXAS
PALO PINTO QUADRANGLE



Prepared under the direction of Colonel W.P. Stokely
Corps of Engineers, U.S.A. Department Engineer,
Southern Department 1918.

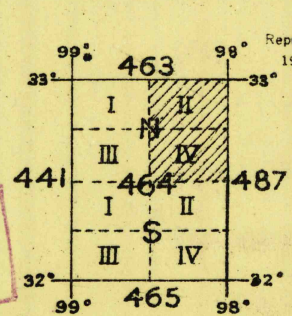
Base map from U.S.G.S engravings.
Corrections and additions by Department
Engineer, Southern Department.



Datum is mean sea level
NOTE: OFFICERS USING THIS MAP WILL MARK HEREON CORRECTIONS AND ADDITIONS WHICH COME
TO THEIR ATTENTION AND MAIL DIRECT TO "THE CHIEF OF ENGINEERS, WASHINGTON, D.C."

U. S. Board on
Geographical Names

RETURN TO:
USGS NHD HISTORICAL MAP ARCHIVES



APPROXIMATE MEAN
DECLINATION 1918

PALO PINTO,
TEXAS