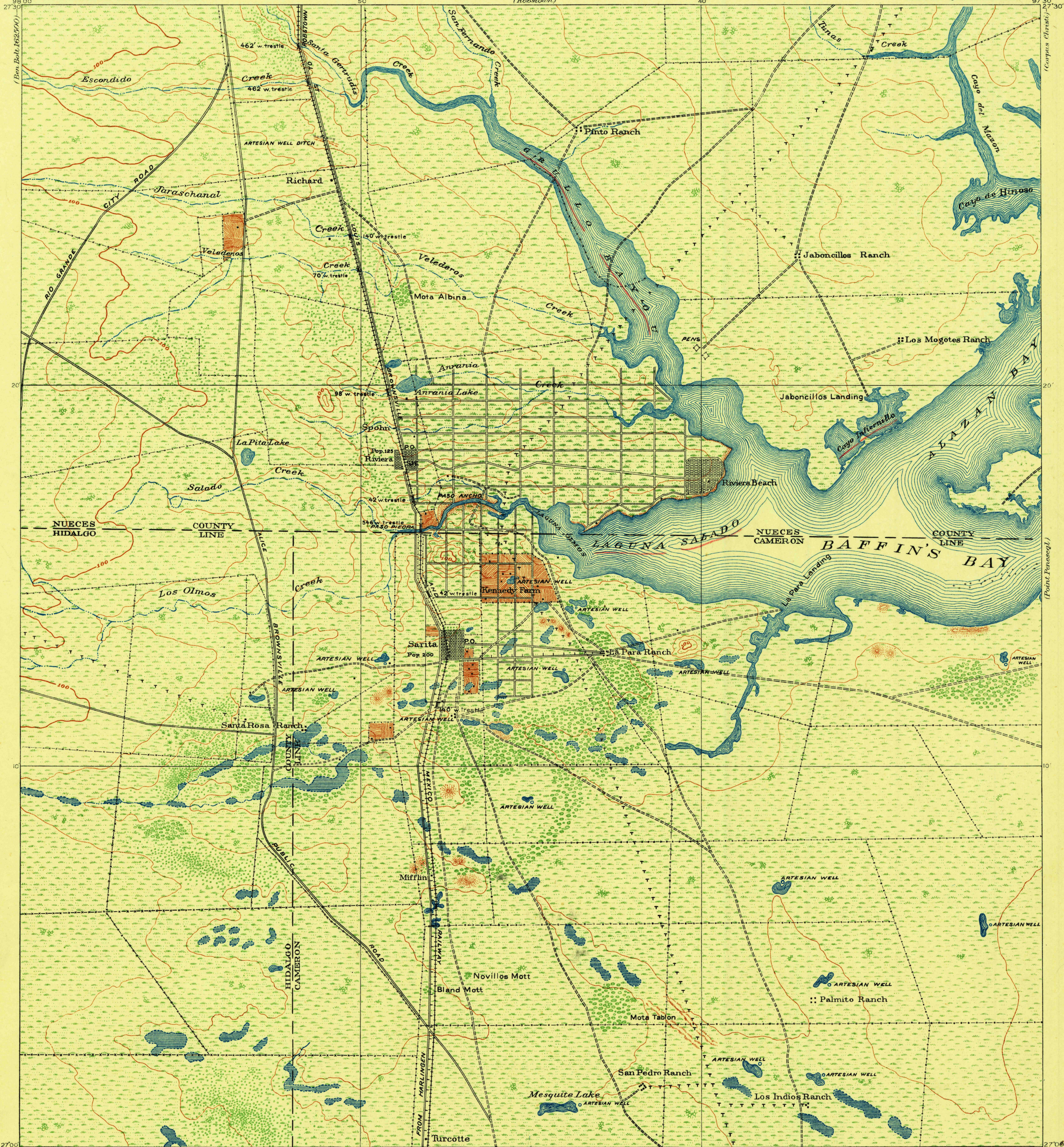


HARRIMAN INDEX 2508:44/:45
TACTICAL INDEX 492-S-I & III

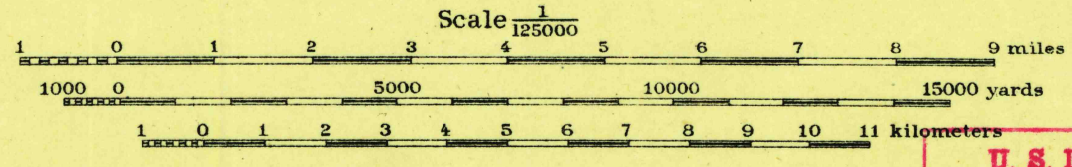
CORPS OF ENGINEERS, U.S. ARMY
PROGRESSIVE MILITARY MAP

TEXAS
SARITA QUADRANGLE



A. E. Waldron, Capt. Corps of Engineers, Chief
Engineer Officer. S.T. Mackall, 1st. Lieut.
18th Inf. A.D.C., Asst. Chief Engineer Officer.
W.R. Leonard, 1st Lieut. 9th Inf.,
Authority for Topography.
Surveyed 1909.

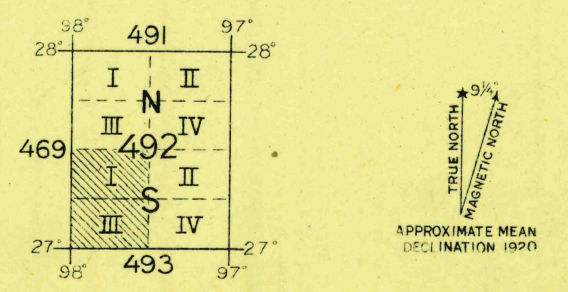
Engineer Reproduction Plant, U.S. Army, Washington Barracks, D.C.
1920-R-1928



Legend
Oak
Mesquite
Spanish Bayonet

Contour Interval 20 feet
Datum is mean sea level
NOTE OFFICERS USING THIS MAP WILL MARK HEREON CORRECTIONS AND ADDITIONS WHICH COME TO THEIR ATTENTION AND MAIL DIRECT TO THE CHIEF OF ENGINEERS, WASHINGTON, D.C.

U. S. Dept. of Interior
Div. of Geography
Class... 630 CE 1928
Date.....



RETURN TO: ARMY ENGINEERING ARCHIVES
SARITA, TEX.