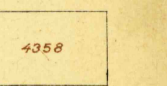


(Alpine)

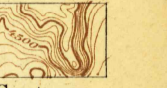


LEGEND

RELIEF  
(printed in brown)

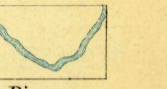


Figures  
(showing heights above  
mean sea level in  
meters, feet, or  
meters)

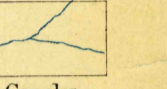


Contours  
(showing height above  
sea level, horizontal form,  
and steepness of slope  
of the surface)

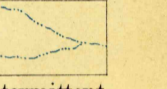
DRAINAGE  
(printed in blue)



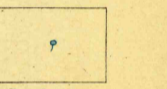
Rivers



Creeks

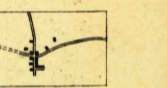


Intermittent  
streams  
(including both stream  
beds and sub-  
surface streams)

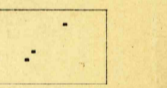


Springs

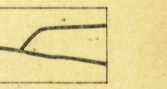
CULTURE  
(printed in black)



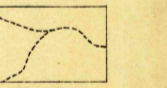
Towns



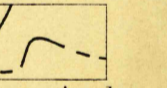
Buildings



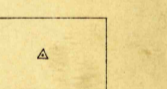
Roads



Trails



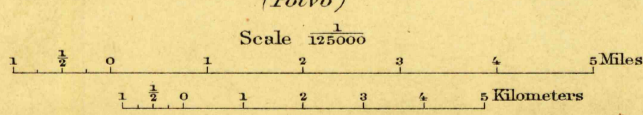
International  
boundary lines



Triangulation  
stations

Henry Gannett, Chief Topographer.  
E.M. Douglas, Topographer in charge.  
Triangulation by C.F. Urquhart  
Topography by C.C. Bassett, and C.B. Green.  
Surveyed in 1895.

ENGRAVED NOV. 1896 BY U.S.G.S.



Scale 1:25000  
Contour Interval 100 feet.

Datum is mean Sea level.

Edition of Dec. 1896.

U. S. G. S.  
FILE COPY  
Editor Topographic Maps.

March 25-97  
500  
Shafter, Tex.