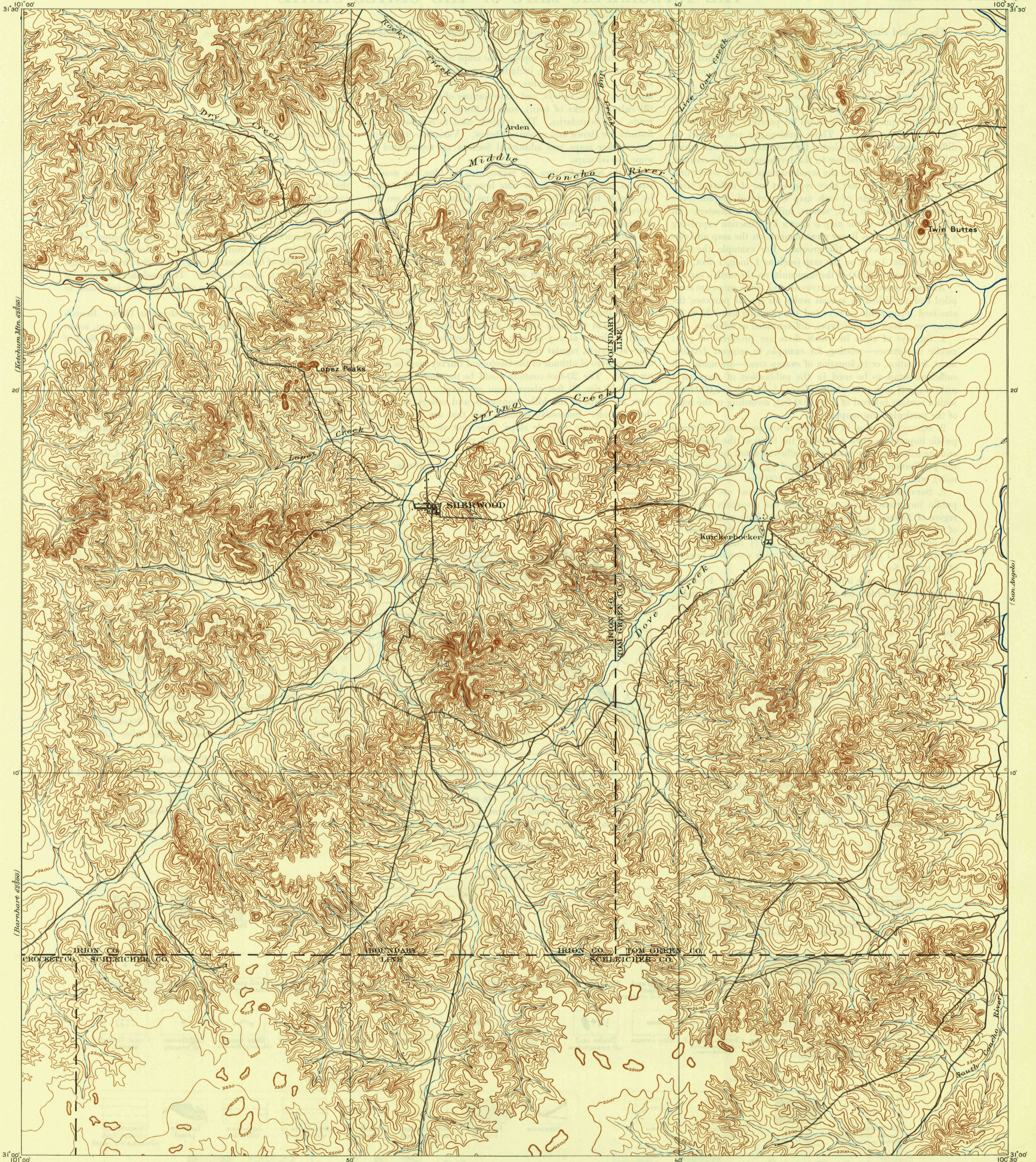
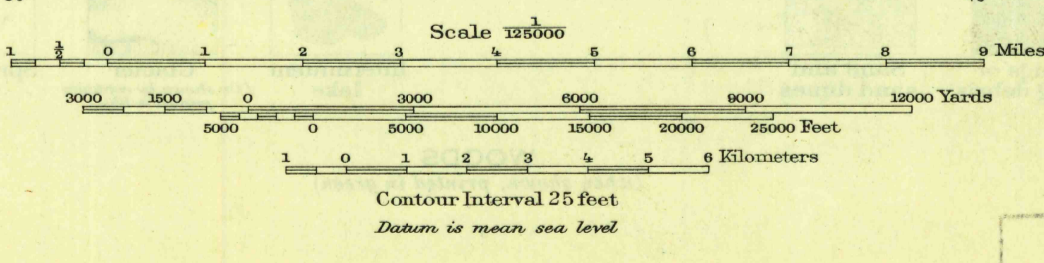


U.S.G.S.
FILE COPY
Inspection and Printing



A.H. Thompson, Geographer.
R.U. Goode, Topographer in charge.
Triangulation by R.U. Goode.
Topography by W.H. Herron.
Surveyed in 1893.



Map of the Tankersley quadrangle scale 1:62 500 from later and more detailed surveys covering part of the northeast quarter of this area, is available

Edition of July 1895, reprinted 1945.
Polyconic projection.
Surveyed by reconnaissance methods

TEX.
SHERWOOD
N3100-W10030/30

U.S.G.S.
FILE COPY
Inspection and Printing