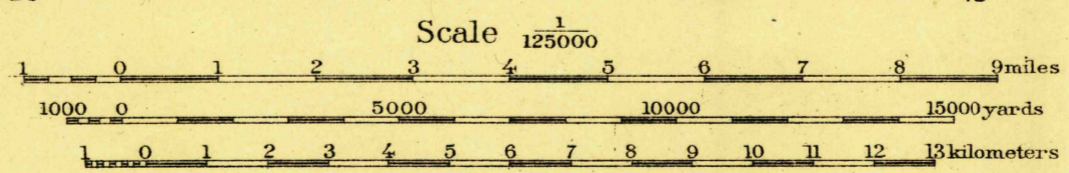




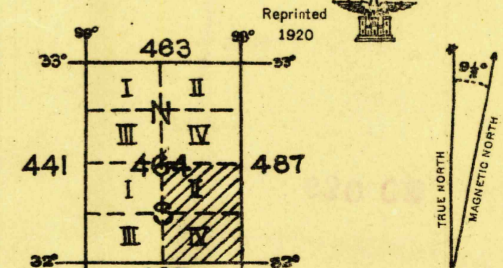
Photolith. & printed at U.S. Lake Survey Office, Detroit, Mich. 98° 00'

Prepared under the direction of Colonel W.P. Stokely  
Corps of Engineers, U.S.A. Department Engineer  
Southern Department, 1918.

Base map from U.S.G.S. engravings.  
Corrections and additions by Department  
Engineer, Southern Department.



Scale 1/125000  
Contour Interval 50 feet  
Datum is mean sea level



NOTE: OFFICERS USING THIS MAP WILL MARK HEREON CORRECTIONS AND ADDITIONS WHICH COME

WILLE