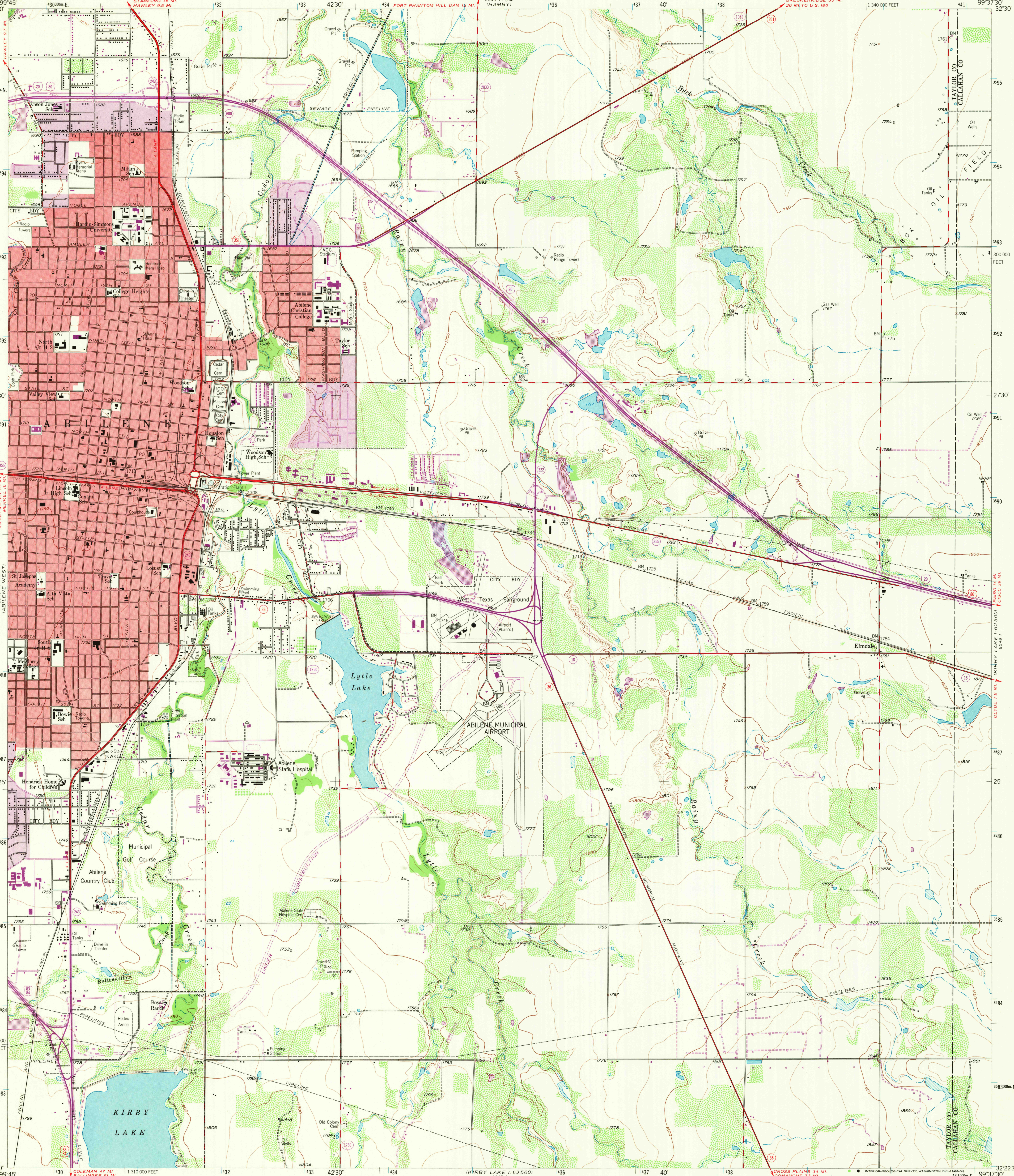
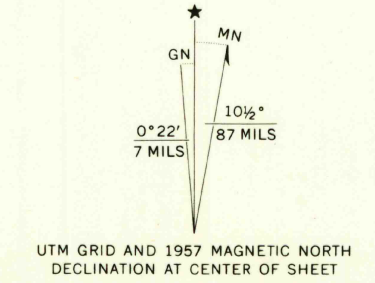


ABILENE EAST QUADRANGLE
TEXAS
7.5 MINUTE SERIES (TOPOGRAPHIC)
NW 1/4 ABILENE 15 QUADRANGLE

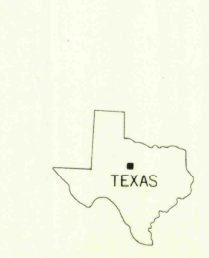
UNITED STATES
DEPARTMENT OF THE INTERIOR
GEOLOGICAL SURVEY



Mapped, edited, and published by the Geological Survey
Control by USGS and USC&GS
Topography from aerial photographs by ER-55 plotter
Aerial photographs taken 1954. Field check 1957
Polyconic projection. 1927 North American datum
10,000-foot grid based on Texas coordinate system,
north central zone
1000-meter Universal Transverse Mercator grid ticks,
zone 14, shown in blue
Red tint indicates areas in which only
landmark buildings are shown
Revisions shown in purple compiled by the Geological Survey from
aerial photographs taken 1967. This information not field checked
Purple tint indicates extension of urban areas



THIS MAP COMPLIES WITH NATIONAL MAP ACCURACY STANDARDS
FOR SALE BY U.S. GEOLOGICAL SURVEY, DENVER, COLORADO 80225, OR WASHINGTON, D. C. 20242
A FOLDER DESCRIBING TOPOGRAPHIC MAPS AND SYMBOLS IS AVAILABLE ON REQUEST



U.S.G.S.
FILE COPY
TOPOGRAPHIC DIVISION

ROAD CLASSIFICATION
Heavy-duty _____ Light-duty _____
Medium-duty _____ Unimproved dirt _____
Interstate Route _____ U.S. Route _____ State Route _____
ABILENE EAST, TEX.
NW 1/4 ABILENE 15 QUADRANGLE
N3222.5-W9937.5/7.5
1957
AMS 6048 I NW-SERIES V882
OCT 15 1968