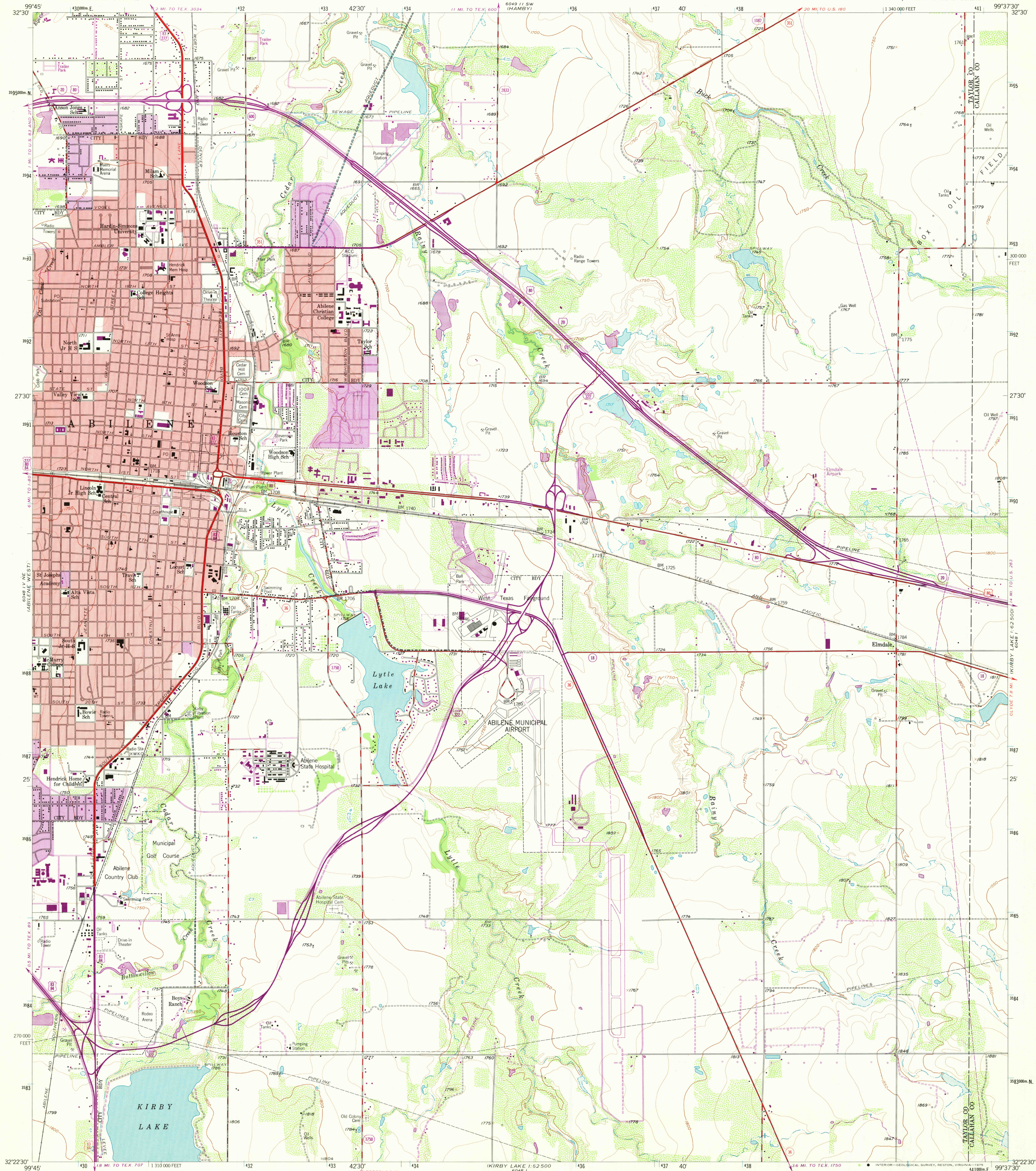


UNITED STATES
DEPARTMENT OF THE INTERIOR
GEOLOGICAL SURVEY

ABILENE EAST QUADRANGLE
TEXAS
7.5 MINUTE SERIES (TOPOGRAPHIC)
NW/4 KIRBY LAKE 15' QUADRANGLE



Mapped, edited, and published by the Geological Survey
Control by USGS and NOS/NOAA

Topography from aerial photographs by ER-55 plotter
Aerial photographs taken 1954. Field check 1957

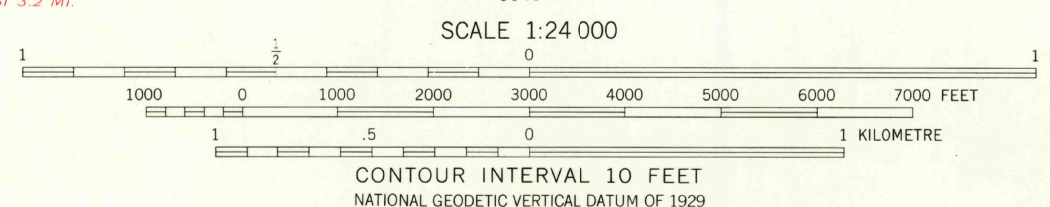
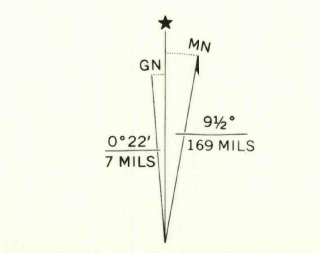
Polyconic projection. 1927 North American datum
10,000-foot grid based on Texas coordinate system,
north central zone

1000-metre Universal Transverse Mercator grid ticks,
zone 14, shown in blue

Red tint indicates areas in which only
landmark buildings are shown

Revisions shown in purple compiled from aerial photographs
taken 1967 and 1974. This information not field checked

Purple tint indicates extension of urban areas



ROAD CLASSIFICATION	
Primary highway, hard surface	Light-duty road, hard or improved surface
Secondary highway, hard surface	Unimproved road
Interstate Route	U. S. Route
	State Route



THIS MAP COMPLIES WITH NATIONAL MAP ACCURACY STANDARDS
FOR SALE BY U. S. GEOLOGICAL SURVEY, DENVER, COLORADO 80225, OR RESTON, VIRGINIA 22092
A FOLDER DESCRIBING TOPOGRAPHIC MAPS AND SYMBOLS IS AVAILABLE ON REQUEST

USGS
HISTORICAL FILE
TOPOGRAPHIC DIVISION
ABILENE EAST, TEX.
NW/4 KIRBY LAKE 15' QUADRANGLE
N3222.5-W9937.5/7.5
1957
PHOTOREVISED 1967 AND 1974
AMS 6048 1 NW - SERIES V882

FEB 02 1976