

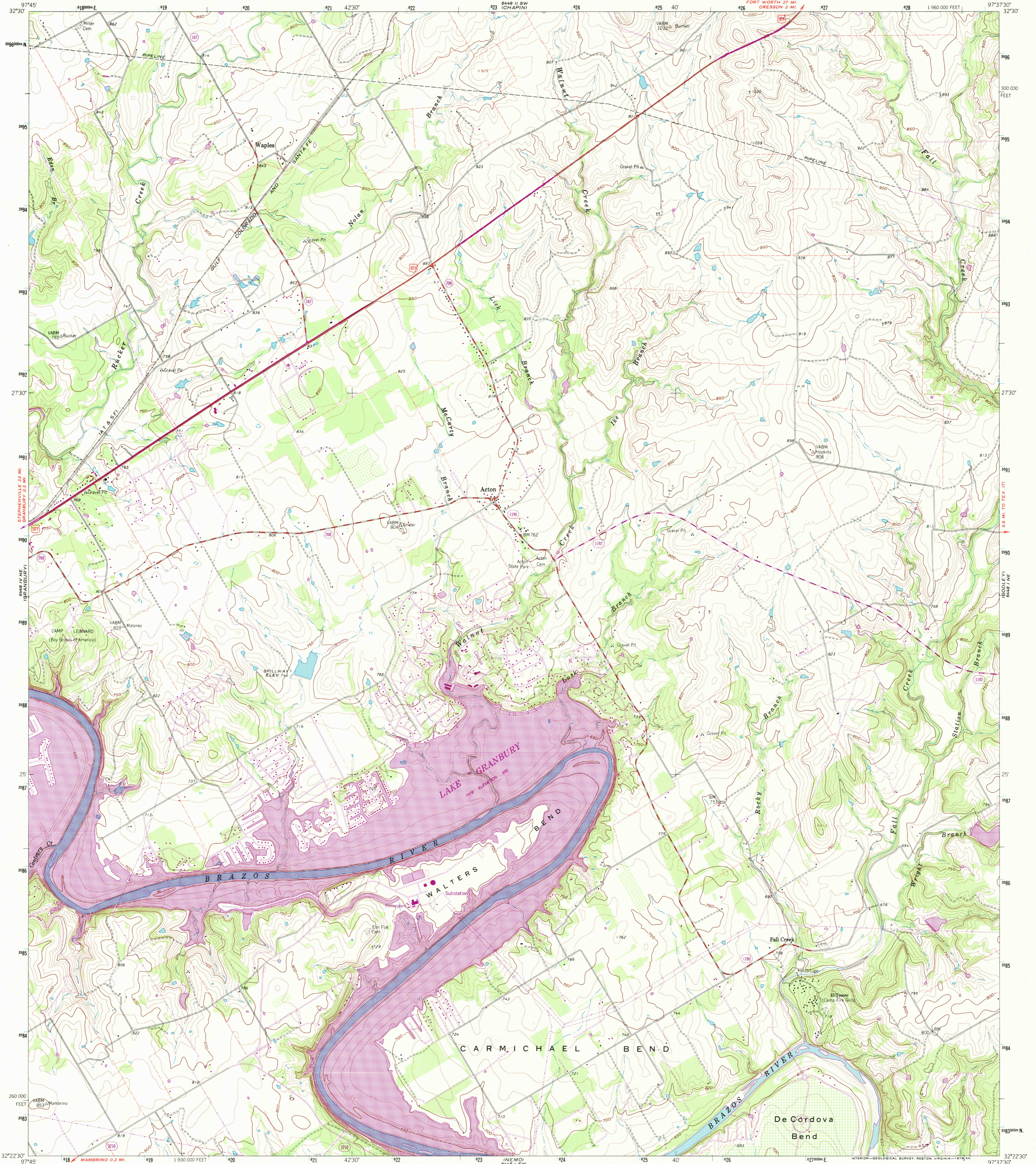
6448 11 SW (CHAPIN)



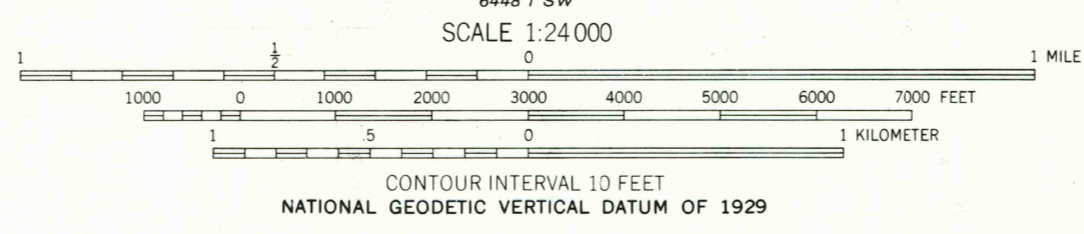
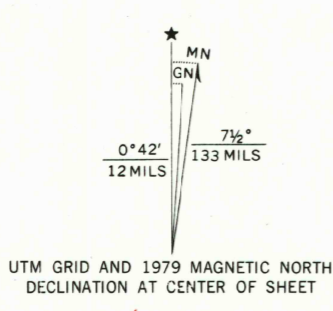
U.S. DEPARTMENT OF THE INTERIOR
U.S. GEOLOGICAL SURVEY

ACTON QUADRANGLE
TEXAS-HOOD CO.
7.5 MINUTE SERIES (TOPOGRAPHIC)

6448 11 SE (CRENSON)



Mapped, edited, and published by the Geological Survey
Control by USGS and USC&GS
Topography by photogrammetric methods from aerial photographs taken 1958. Field checked 1961
Polyconic projection. 1927 North American datum
10,000-foot grid based on Texas coordinate system, north central zone
1000-meter Universal Transverse Mercator grid ticks, zone 14, shown in blue
Fine red dashed lines indicate selected fence and field lines where generally visible on aerial photographs. This information is unchecked
Revisions shown in purple and woodland compiled from aerial photographs taken 1976 and other source data
This information not field checked. Map edited 1979



ROAD CLASSIFICATION
Primary highway, all weather, improved surface
Secondary highway, all weather, unimproved road, fair or dry hard surface
Interstate Route U.S. Route State Route
Light-duty road, all weather, improved surface
Unimproved road, fair or dry weather



RECEIVED
JUN 30 2001
HISTORICAL MAP ARCHIVES

ACTON, TEX.
N3222.5-W9737.5/7.5
1961
PHOTOREVISED 1979
AMS 6448 I NW-SERIES V882

THIS MAP COMPLIES WITH NATIONAL MAP ACCURACY STANDARDS
FOR SALE BY U.S. GEOLOGICAL SURVEY, P.O. BOX 25286, DENVER, COLORADO 80225
A FOLDER DESCRIBING TOPOGRAPHIC MAPS AND SYMBOLS IS AVAILABLE ON REQUEST

ISBN 0-607-14910-8
9 780607 496901