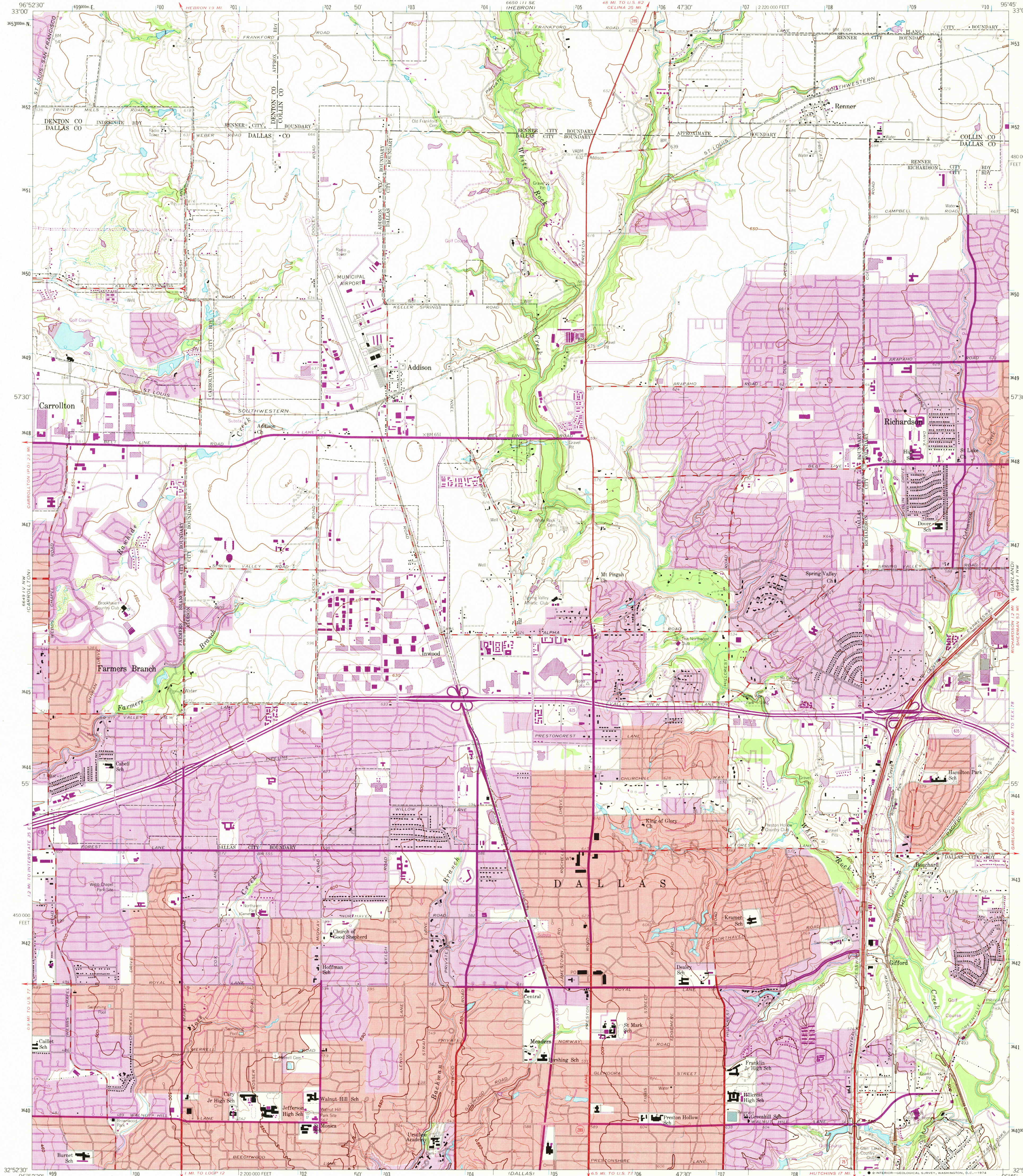


UNITED STATES
DEPARTMENT OF THE INTERIOR
GEOLOGICAL SURVEY

ADDISON QUADRANGLE
TEXAS
7.5 MINUTE SERIES (TOPOGRAPHIC)
NE/4 CARROLLTON 15' QUADRANGLE



Mapped, edited, and published by the Geological Survey

Control by USGS and USC&GS

Topography from aerial photographs by photogrammetric methods

Aerial photographs taken 1956. Field check 1959

Polyconic projection. 1927 North American datum

10,000-foot grid based on Texas coordinate system,

north central zone

1000-meter Universal Transverse Mercator grid ticks,

zone 14, shown in blue

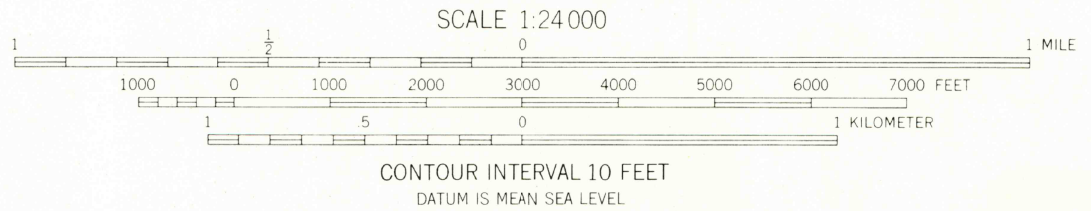
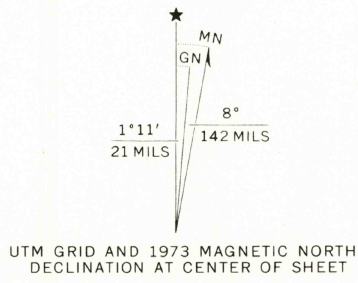
Red tint indicates areas in which only

landmark buildings are shown

Revisions shown in purple compiled from aerial photographs

taken 1968 and 1973. This information not field checked

Purple tint indicates extension of urban areas



THIS MAP COMPLIES WITH NATIONAL MAP ACCURACY STANDARDS
FOR SALE BY U.S. GEOLOGICAL SURVEY, DENVER, COLORADO 80225, OR RESTON, VIRGINIA 22092
A FOLDER DESCRIBING TOPOGRAPHIC MAPS AND SYMBOLS IS AVAILABLE ON REQUEST



USGS
Historical File
Topographic Division

5500

ADDISON, TEX. DEC 0 2 1974
NE/4 CARROLLTON 15' QUADRANGLE
N3252.5-W9645.7/7.5

1959
PHOTOREVISED 1968 AND 1973

AMS 6649 IV NE-SERIES V882