

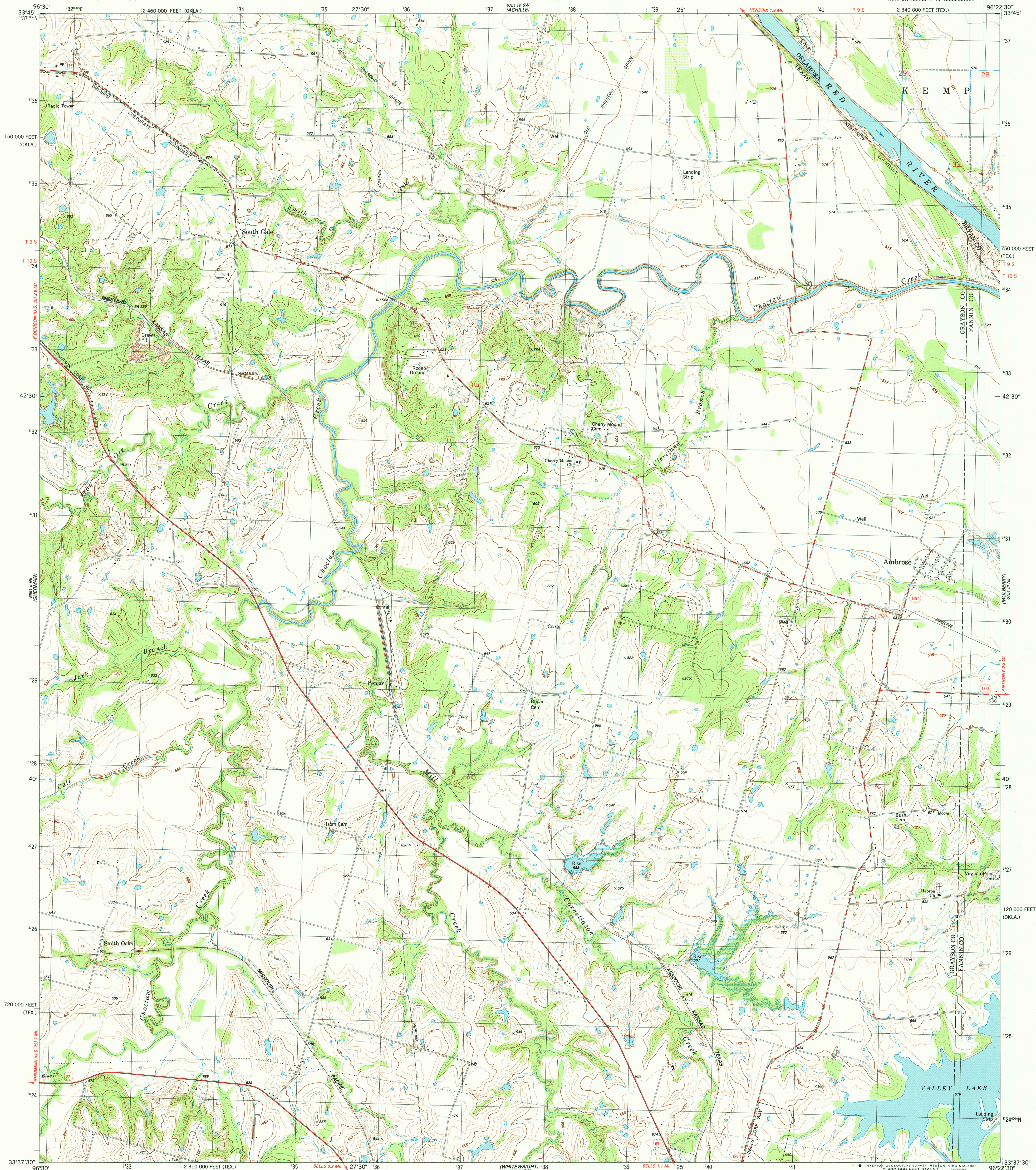
DEMISE DAM
(DENISON DAM)

UNITED STATES
DEPARTMENT OF THE INTERIOR
GEOLOGICAL SURVEY

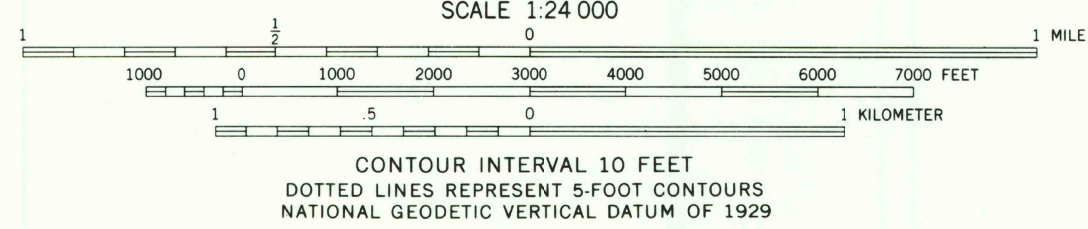
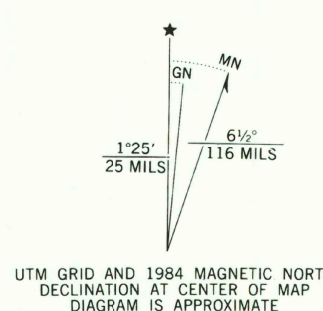
STATE OF TEXAS
TEXAS DEPARTMENT OF WATER RESOURCES

AMBROSE QUADRANGLE
TEXAS-OKLAHOMA
7.5 MINUTE SERIES (TOPOGRAPHIC)
NW4 WHITEWRIGHT 15' QUADRANGLE
2 340 000 FEET (TEX.)

6751 IV SE
(AMBROSE)



Mapped, edited, and published by the Geological Survey
Control by USGS and NOS/NOAA
Topography by photogrammetric methods from aerial photographs
taken 1976. Field checked 1977. Map edited 1984
Projection: Texas coordinate system, north central zone
(Lambert conformal conic)
10,000-foot grid ticks based on Texas coordinate system,
north central zone and Oklahoma coordinate system, south zone
1000-meter Universal Transverse Mercator grid, zone 14
1927 North American Datum
To place on the predicted North American Datum 1983
move the projection lines 8 meters south and
25 meters east as shown by dashed corner ticks
Areas covered by dashed light-blue pattern
are subject to controlled inundation
Fine red dashed lines indicate selected fence lines



THIS MAP COMPLIES WITH NATIONAL MAP ACCURACY STANDARDS
FOR SALE BY U.S. GEOLOGICAL SURVEY, DENVER, COLORADO 80225, OR RESTON, VIRGINIA 22092
A FOLDER DESCRIBING TOPOGRAPHIC MAPS AND SYMBOLS IS AVAILABLE ON REQUEST



QUADRANGLE LOCATION

ROAD CLASSIFICATION
Primary highway, hard surface. Light-duty road, hard or improved surface.
Secondary highway, hard surface. Unimproved road.
Interstate Route U. S. Route State Route

AMBROSE, TEX.-OKLA.
NW4 WHITEWRIGHT 15' QUADRANGLE
33096-F4-TF-024

1984

DMA 6751 III NW-SERIES V882

RETURN TO:
USGS AND HISTORICAL MAP ARCHIVES

078 A