

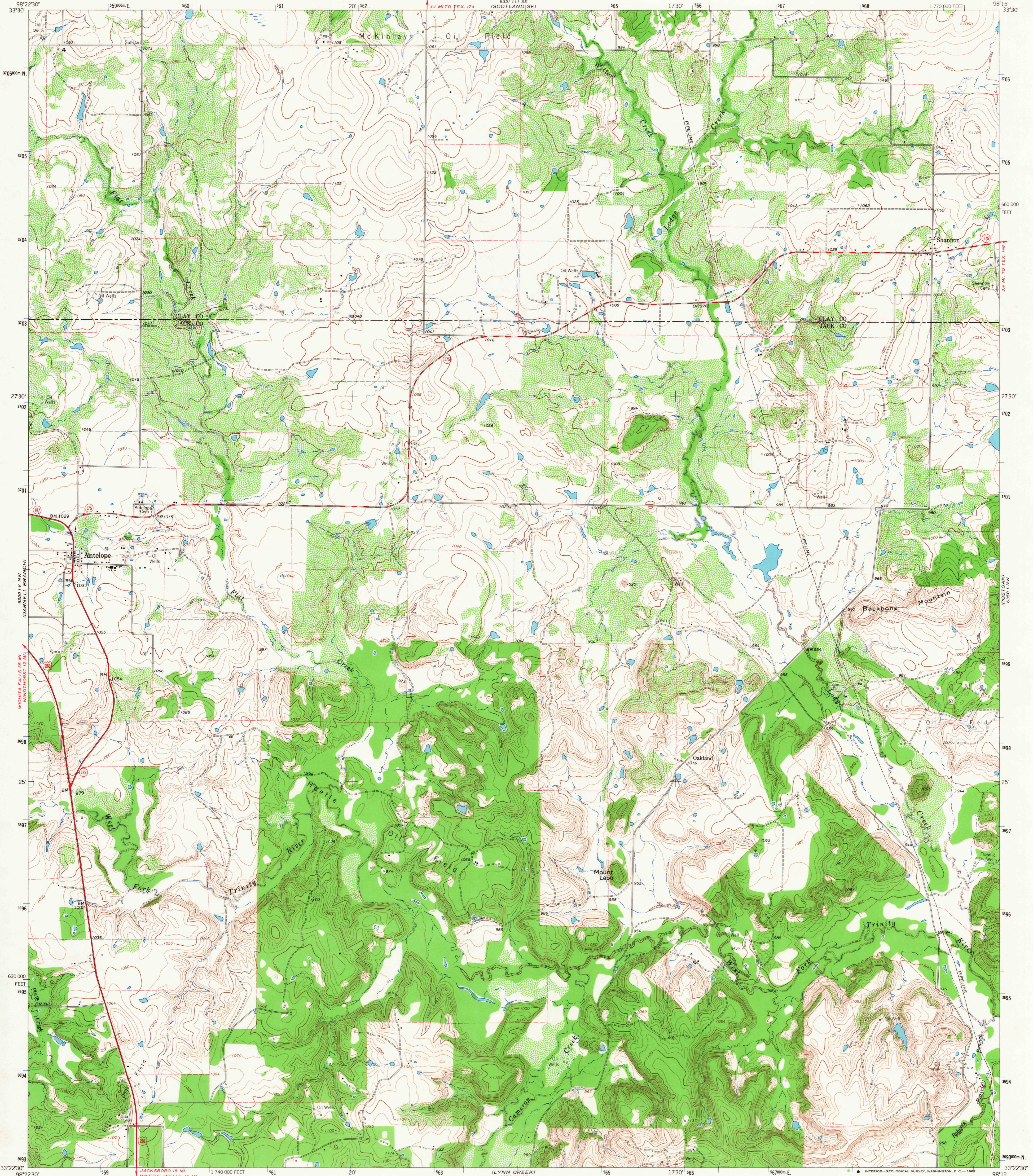
6350 IV SW  
WINDHORST

UNITED STATES  
DEPARTMENT OF THE INTERIOR  
GEOLOGICAL SURVEY

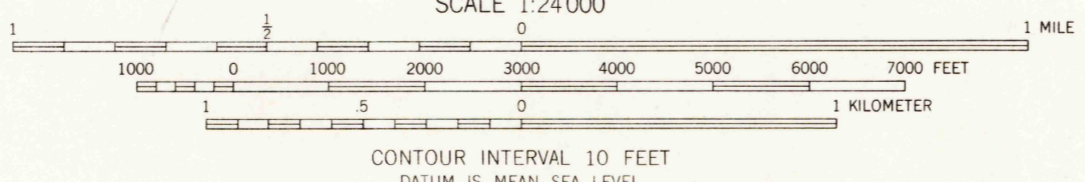
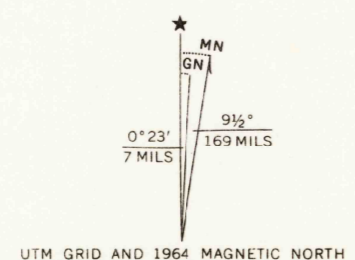
STATE OF TEXAS  
TEXAS WATER DEVELOPMENT BOARD

ANTELOPE QUADRANGLE  
TEXAS  
7.5 MINUTE SERIES (TOPOGRAPHIC)

6350 IV SW  
WINDHORST



Mapped, edited, and published by the Geological Survey  
Control by USGS and USC&GS  
Topography by photogrammetric methods from aerial  
photographs taken 1962. Field checked 1964  
Polyconic projection. 1927 North American datum  
10,000-foot grid based on Texas coordinate system, north central zone  
1000-meter Universal Transverse Mercator grid ticks,  
zone 14, shown in blue  
Fine red dashed lines indicate selected fence lines



CONTOUR INTERVAL 10 FEET  
DATUM IS MEAN SEA LEVEL



U.S.G.S.  
FILE COPY  
TOPOGRAPHIC DIVISION

ROAD CLASSIFICATION  
Heavy-duty ——— Light-duty ———  
Medium-duty ——— Unimproved dirt ———  
U.S. Route ——— State Route ———

ANTELOPE, TEX.  
N3322 5-W9815/7 5  
1964  
AMS 6350 IV NE-SERIES V882

MAY 19 1967

3155

THIS MAP COMPLIES WITH NATIONAL MAP ACCURACY STANDARDS  
FOR SALE BY U.S. GEOLOGICAL SURVEY, DENVER, COLORADO 80225, OR WASHINGTON, D. C. 20242  
A FOLDER DESCRIBING TOPOGRAPHIC MAPS AND SYMBOLS IS AVAILABLE ON REQUEST