

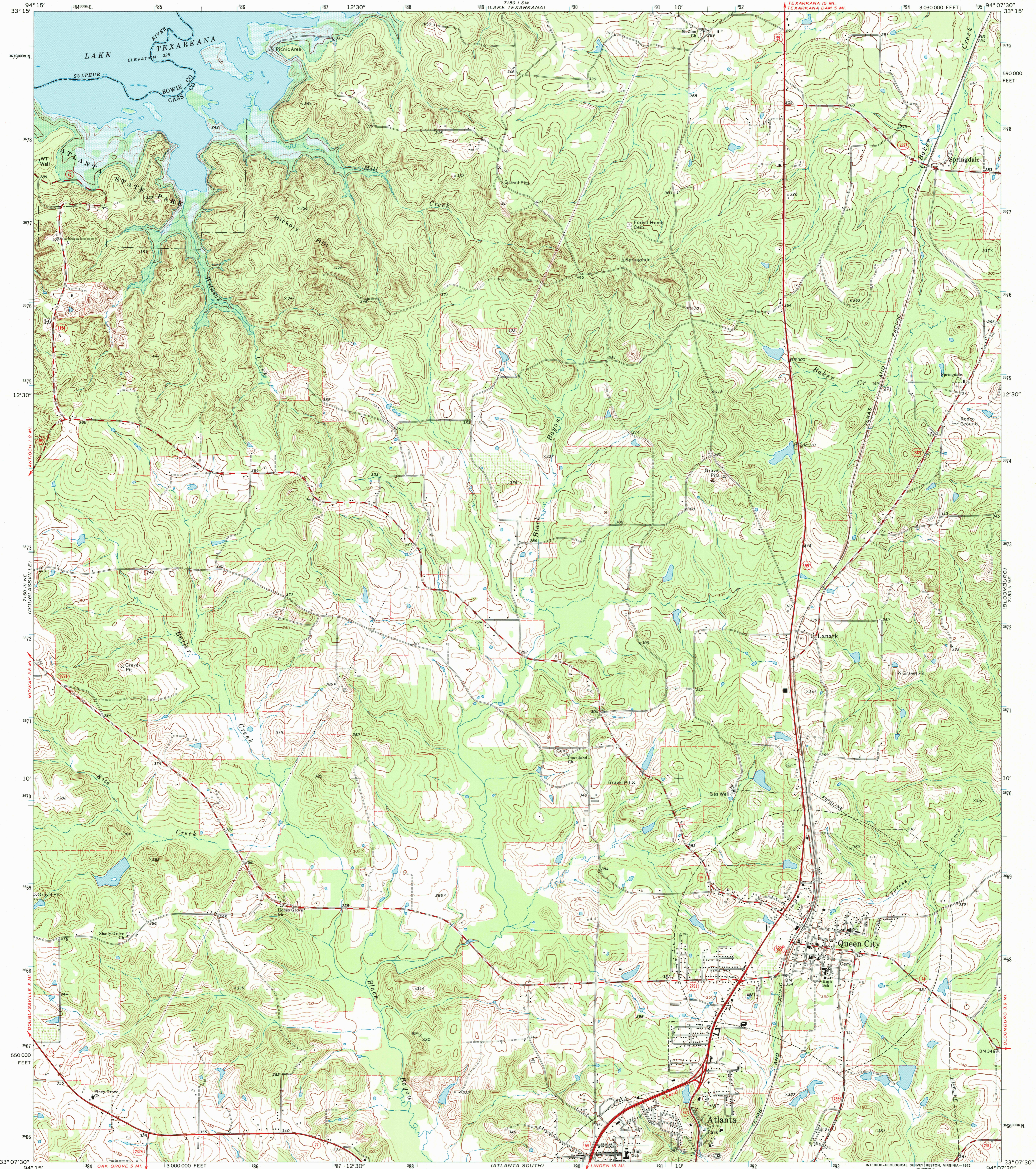
7.5 MINUTE  
INCHES



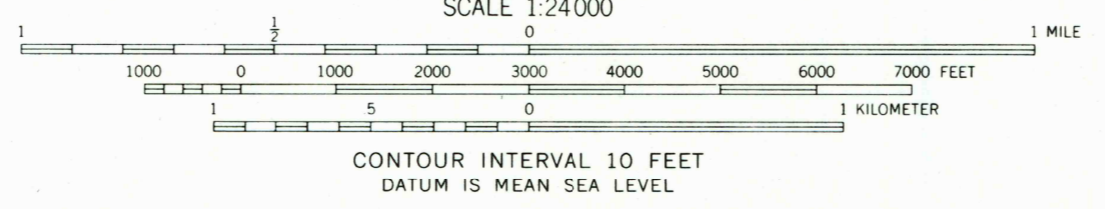
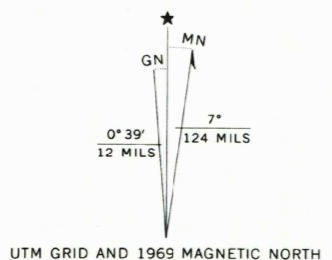
U.S. DEPARTMENT OF THE INTERIOR  
U.S. GEOLOGICAL SURVEY

ATLANTA NORTH QUADRANGLE  
TEXAS  
7.5 MINUTE SERIES (TOPOGRAPHIC)  
NW/4 ATLANTA 15' QUADRANGLE

7.5 MINUTE  
INCHES



Mapped, edited, and published by the Geological Survey  
Control by USGS and USC&GS  
Topography by photogrammetric methods from aerial photographs taken 1968. Field checked 1969  
Polyconic projection. 1927 North American datum  
10,000-foot grid based on Texas coordinate system, north central zone  
1000-meter Universal Transverse Mercator grid ticks, zone 15, shown in blue  
Fine red dashed lines indicate selected fence lines  
Areas covered by dashed light-blue pattern are subject to controlled inundation



QUADRANGLE LOCATION

ROAD CLASSIFICATION	
Primary highway, all weather, hard surface	Light-duty road, all weather, improved surface
Secondary highway, all weather, hard surface	Unimproved road, fair or dry weather
U.S. Route	State Route

THIS MAP COMPLIES WITH NATIONAL MAP ACCURACY STANDARDS  
FOR SALE BY U.S. GEOLOGICAL SURVEY, P.O. BOX 25286, DENVER, COLORADO 80225  
A FOLDER DESCRIBING TOPOGRAPHIC MAPS AND SYMBOLS IS AVAILABLE ON REQUEST

RECEIVED  
MAR 31 2001

ATLANTA NORTH, TEX.

NW/4 ATLANTA 15' QUADRANGLE  
N 3307.5-W9407.5/7.5

1969

AMS 7150 II NW-SERIES V882



ISBN 0-607-49315-6