

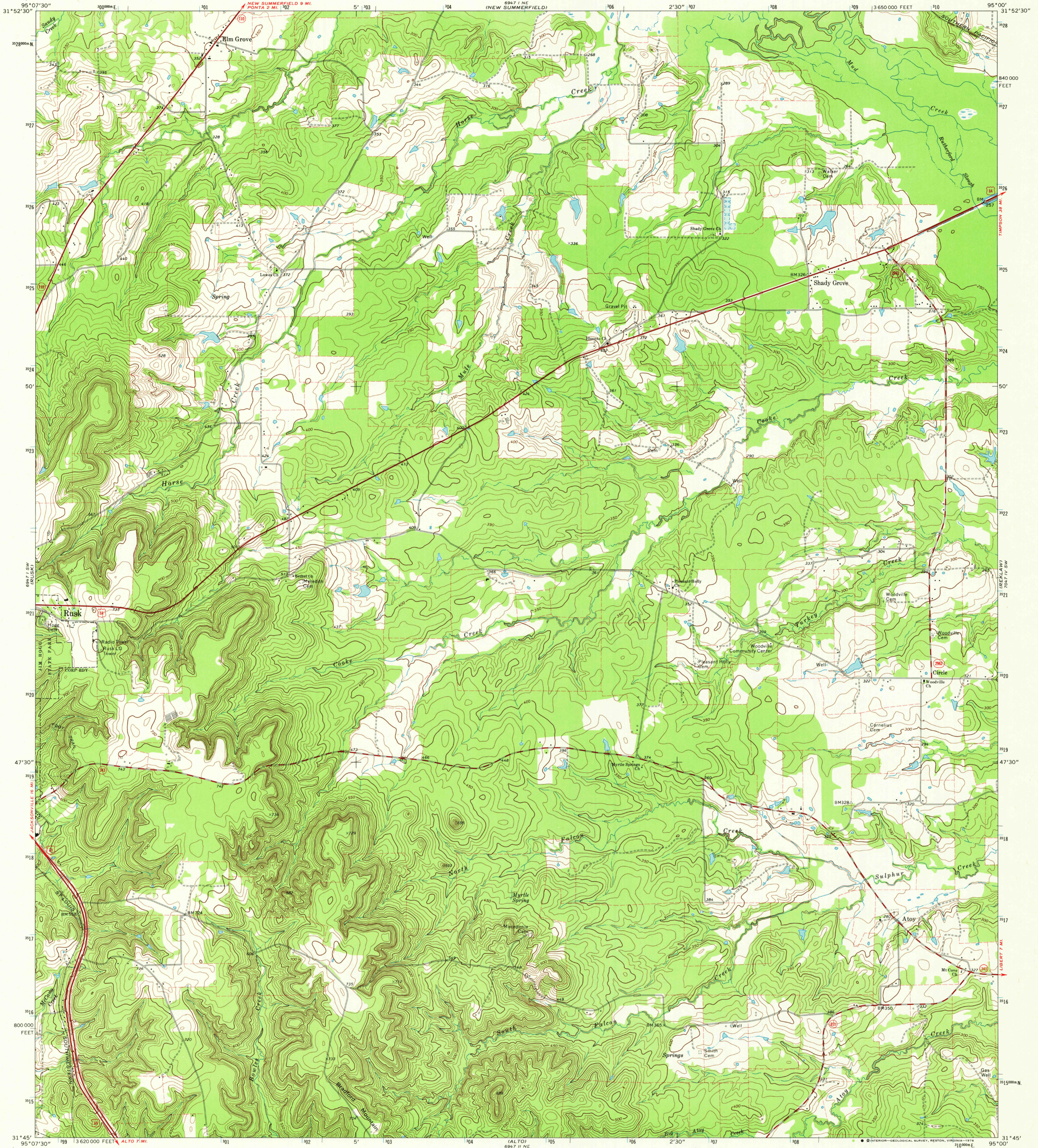
682 11 NW
CORNER
C.A. 2831

UNITED STATES
DEPARTMENT OF THE INTERIOR
GEOLOGICAL SURVEY

STATE OF TEXAS
TEXAS WATER DEVELOPMENT BOARD

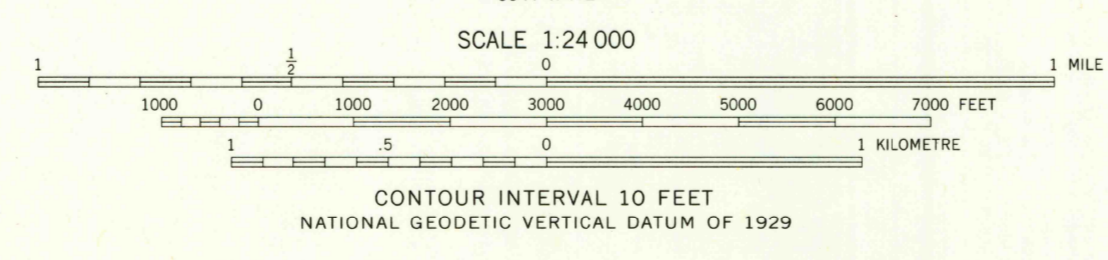
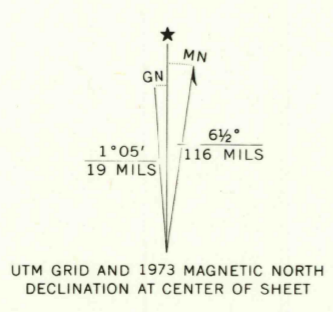
ATOY QUADRANGLE
TEXAS-CHEROKEE CO.
7.5 MINUTE SERIES (TOPOGRAPHIC)
SE 1/4 RUSK 15 QUADRANGLE

682 11 NW
(NEW SALEM)



682 11 NW
CORNER
MCH 2831

Mapped, edited, and published by the Geological Survey
Control by USGS and NOS/NOAA
Topography by photogrammetric methods from aerial
photographs taken 1971. Field checked 1973
Projection and 10,000-foot grid ticks: Texas
coordinate system, central zone (Lambert conformal conic)
1000-metre Universal Transverse Mercator grid ticks,
zone 15, shown in blue. 1927 North American datum
Fine red dashed lines indicate selected fence lines



QUADRANGLE LOCATION

ROAD CLASSIFICATION
Primary highway, hard surface
Secondary highway, hard surface
Light-duty road, hard or improved surface
Unimproved road
Interstate Route
U. S. Route
State Route

THIS MAP COMPLIES WITH NATIONAL MAP ACCURACY STANDARDS
FOR SALE BY U.S. GEOLOGICAL SURVEY, DENVER, COLORADO 80225, OR RESTON, VIRGINIA 22092
A FOLDER DESCRIBING TOPOGRAPHIC MAPS AND SYMBOLS IS AVAILABLE ON REQUEST

USGS
Historical File
Topographic Division

ATOY, TEX.
SE 1/4 RUSK 15 QUADRANGLE
N3145-W9500/7.5
1973
AMS 6847 1 SE-SERIES V882

FEB 02 1970
2720

682 11 NW
(CORNER)
162 300