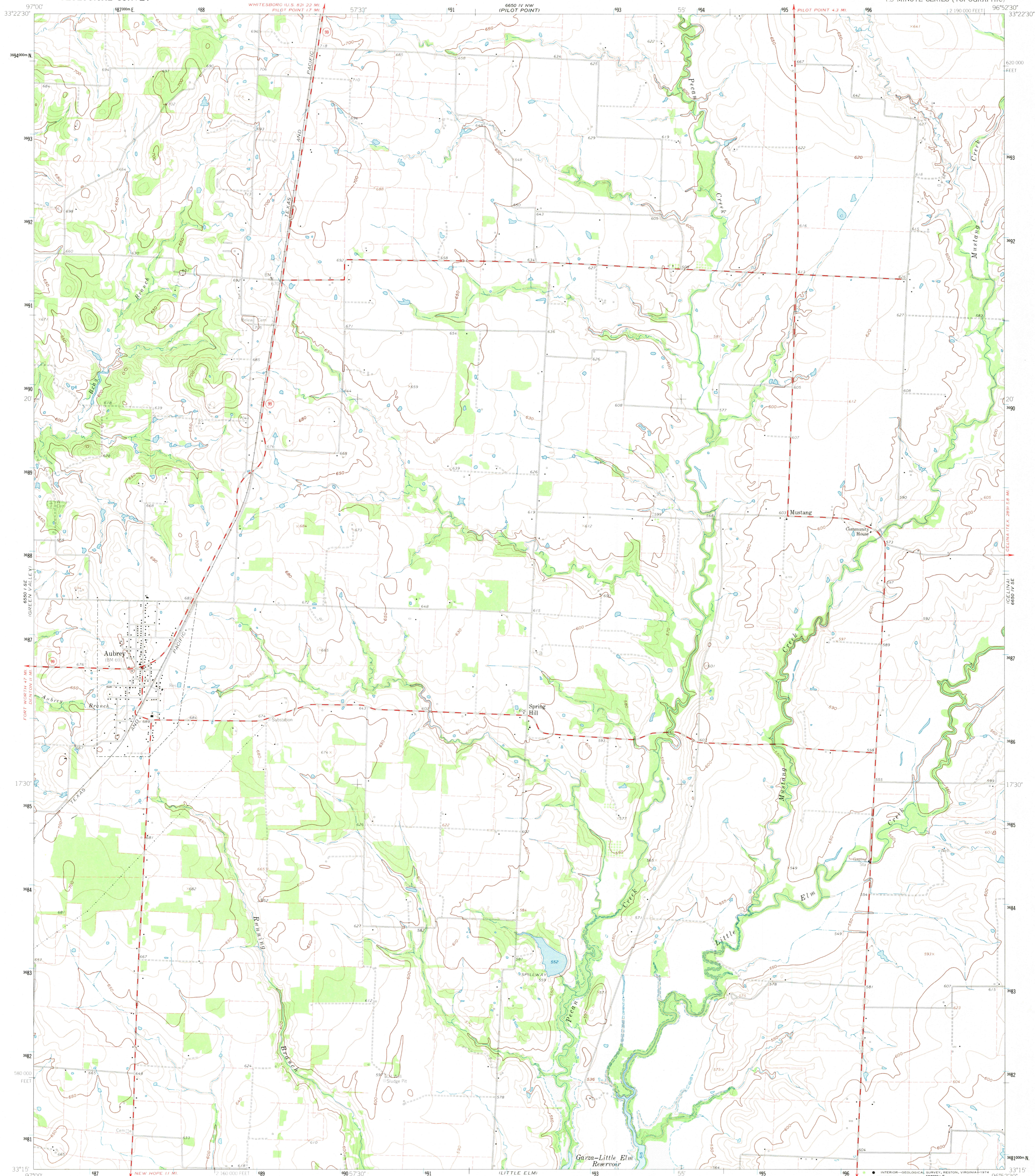


6650 IV SW SERIES

UNITED STATES
DEPARTMENT OF THE INTERIOR
GEOLOGICAL SURVEY

AUBREY QUADRANGLE
TEXAS-DENTON CO
7.5 MINUTE SERIES (TOPOGRAPHIC)

6650 IV SW SERIES



Mapped, edited, and published by the Geological Survey

Control by USGS and USC&GS

Topography from aerial photographs by photogrammetric methods

Aerial photographs taken 1957. Field check 1960

Polconic projection 1927 North American datum

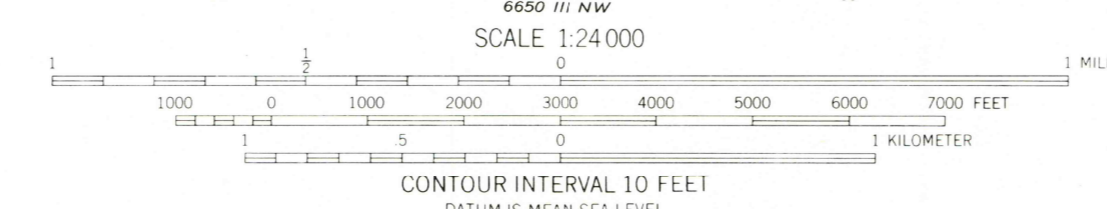
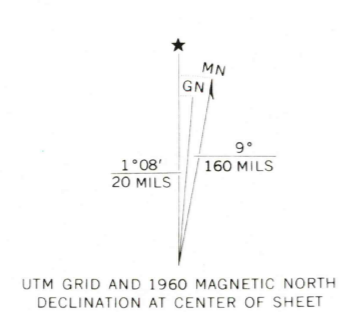
10,000-foot grid based on Texas coordinate system, north central zone

1000-meter Universal Transverse Mercator grid ticks, zone 14, shown in blue

Fine red dashed lines indicate selected fence and field lines where generally visible on aerial photographs

This information is unchecked

Areas covered by dashed light blue pattern are subject to controlled inundation to 532 feet



THIS MAP COMPLIES WITH NATIONAL MAP ACCURACY STANDARDS
FOR SALE BY U.S. GEOLOGICAL SURVEY, DENVER, COLORADO 80225, OR RESTON, VIRGINIA 22092
A FOLDER DESCRIBING TOPOGRAPHIC MAPS AND SYMBOLS IS AVAILABLE ON REQUEST

USGS
Historical File
Topographic Division

AUBREY, TEX.
N3315-W9652.5/7.5
1960
AMS 6650 IV SW-SERIES V882

MAR 28 1974

2415