

30° 22' 30" N

30° 22' 30" N

30° 22' 30" N

30° 22' 30" N

30° 22' 30" N

30° 22' 30" N

30° 22' 30" N

30° 22' 30" N

30° 22' 30" N

30° 22' 30" N

30° 22' 30" N

30° 22' 30" N

30° 22' 30" N

30° 22' 30" N

30° 22' 30" N

30° 22' 30" N

30° 22' 30" N

30° 22' 30" N

30° 22' 30" N

30° 22' 30" N

30° 22' 30" N

30° 22' 30" N

30° 22' 30" N

30° 22' 30" N

30° 22' 30" N

30° 22' 30" N

30° 22' 30" N

30° 22' 30" N

97° 37' 30" W

97° 37' 30" W

97° 37' 30" W

97° 37' 30" W

97° 37' 30" W

97° 37' 30" W

97° 37' 30" W

97° 37' 30" W

97° 37' 30" W

97° 37' 30" W

97° 37' 30" W

97° 37' 30" W

97° 37' 30" W

97° 37' 30" W

97° 37' 30" W

97° 37' 30" W

97° 37' 30" W

97° 37' 30" W

97° 37' 30" W

97° 37' 30" W

97° 37' 30" W

97° 37' 30" W

97° 37' 30" W

97° 37' 30" W

97° 37' 30" W

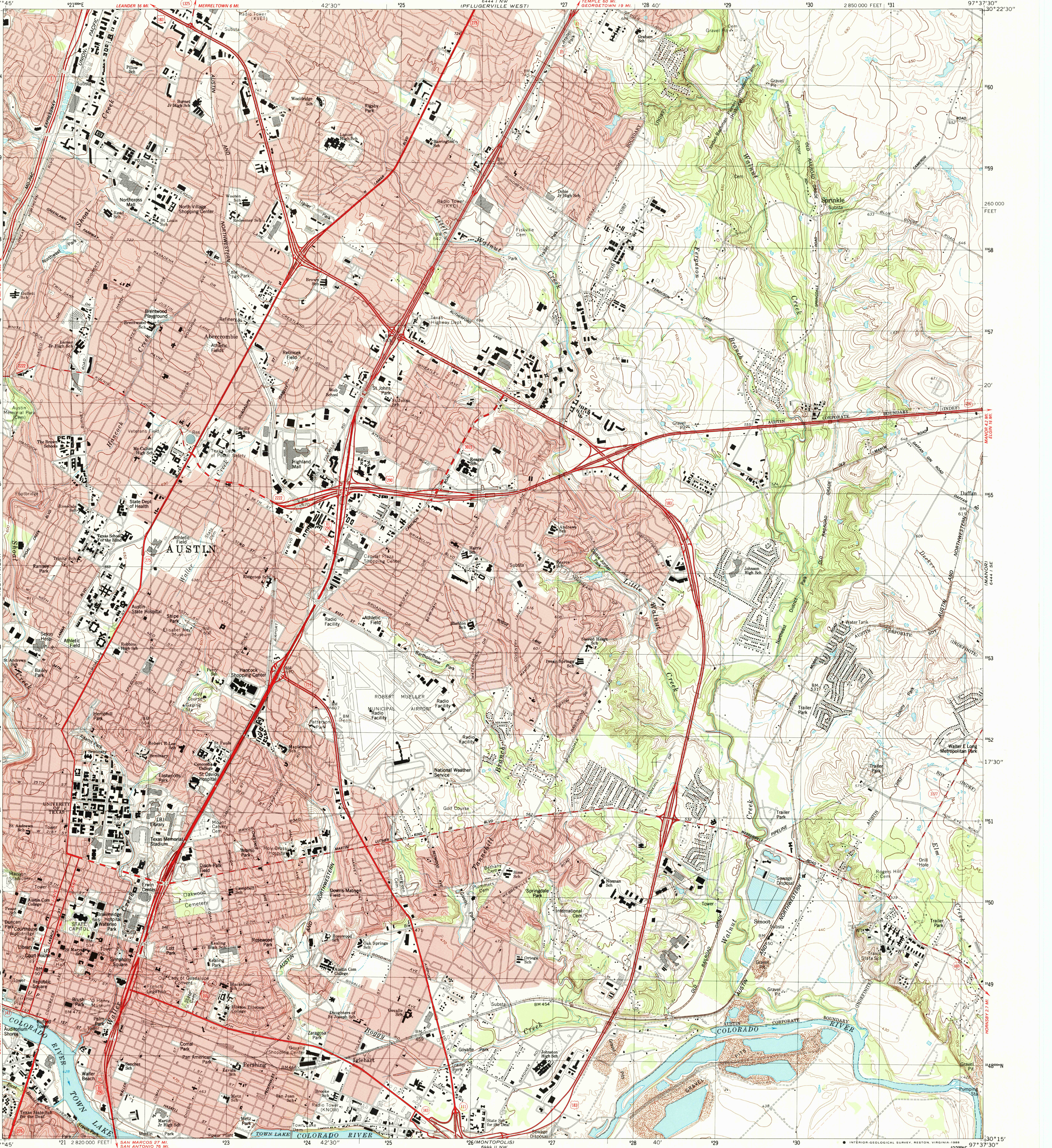
97° 37' 30" W

97° 37' 30" W

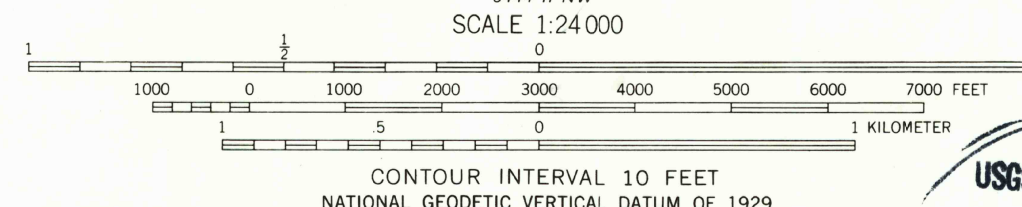
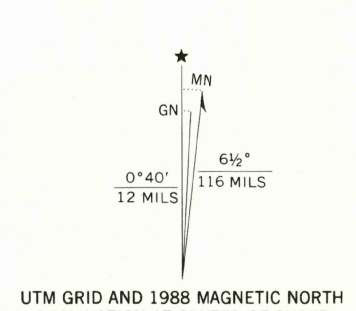
97° 37' 30" W

UNITED STATES
DEPARTMENT OF THE INTERIOR
GEOLOGICAL SURVEY

AUSTIN EAST QUADRANGLE
TEXAS-TRAVIS CO.
7.5 MINUTE SERIES (TOPOGRAPHIC)



Mapped, edited, and published by the Geological Survey
in cooperation with City of Austin
Control by USGS and NOS/NOAA
Topography by photogrammetric methods from aerial photographs
taken 1952. Field checked 1954. Revised from aerial photographs
taken 1985. Field checked 1986. Map edited 1988
Projection and 10,000-foot grid ticks: Texas
coordinate system, central zone (Lambert conformal conic)
1000-meter Universal Transverse Mercator grid, zone 14
1927 North American Datum
To place on the predicted North American Datum 1983
move the projection lines 18 meters south and
28 meters east as shown by dashed corner ticks
Red tint indicates areas in which only landmark buildings are shown
Fine red dashed lines indicate selected fence lines



USGS NMD HISTORICAL MAP
SEP 15 1988
REC'D FILE COPY



ROAD CLASSIFICATION
Primary highway, hard surface
Secondary highway, hard surface
Unimproved road
Interstate Route
U. S. Route
State Route

AUSTIN EAST, TEX.
30097-C6-TF-024
1988
DMA 6444 1 SW-SERIES V882

SEP 15 1988