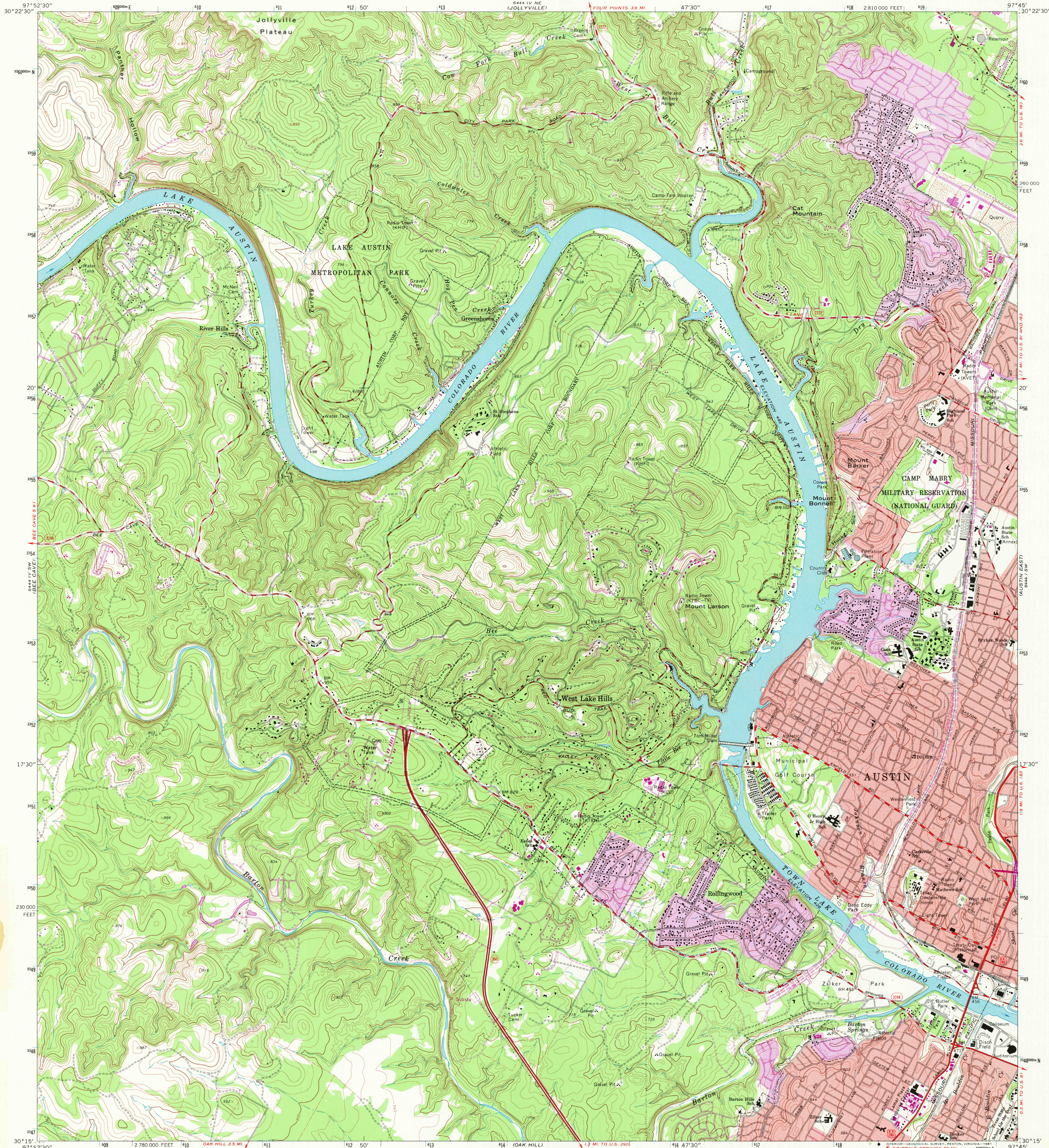


UNITED STATES  
DEPARTMENT OF THE INTERIOR  
GEOLOGICAL SURVEY

CITY OF AUSTIN

AUSTIN WEST QUADRANGLE  
TEXAS—TRAVIS CO.  
7.5 MINUTE SERIES (TOPOGRAPHIC)  
SE/4 LAKE TRAVIS 15' QUADRANGLE



Mapped, edited, and published by the Geological Survey  
Control by USGS and USC&GS  
Topography by photogrammetric methods from aerial  
photographs taken 1952. Field checked 1954. Revised from  
aerial photographs taken 1966. Field checked 1966  
Polyconic projection. 1927 North American datum  
10,000-foot grid based on Texas coordinate system,  
central zone  
1000-meter Universal Transverse Mercator grid ticks,  
zone 14, shown in blue  
Red tint indicates areas in which only landmark buildings are shown  
Fine red dashed lines indicate selected fence lines  
Revisions shown in purple compiled from aerial photographs  
taken 1973. This information not field checked  
Purple tint indicates extension of urban areas

UTM GRID AND 1973 MAGNETIC NORTH  
DECLINATION AT CENTER OF SHEET  
To place on the predicted North American Datum 1983  
move the projection lines 18 meters south and  
28 meters east as shown by dashed corner ticks

SCALE 1:24,000  
CONTOUR INTERVAL 20 FEET  
NATIONAL GEODETIC VERTICAL DATUM OF 1929

THIS MAP COMPLIES WITH NATIONAL MAP ACCURACY STANDARDS  
FOR SALE BY U.S. GEOLOGICAL SURVEY, DENVER, COLORADO 80225, OR RESTON, VIRGINIA 22092  
A FOLDER DESCRIBING TOPOGRAPHIC MAPS AND SYMBOLS IS AVAILABLE ON REQUEST



QUADRANGLE LOCATION

ROAD CLASSIFICATION  
Primary highway, hard surface  
Secondary highway, hard surface  
Unimproved road  
Interstate Route  
U. S. Route  
State Route

USGS  
HISTORICAL FILE  
NATIONAL MAP DIVISION

AUSTIN WEST, TEX.  
SE/4 LAKE TRAVIS 15' QUADRANGLE  
N3015—W9745/7.5  
1966  
PHOTOREVISED 1973  
DMA 6444 IV SE—SERIES V882

JUL 9 1981  
3900